

Higher Ed Data in Texas: Data Fellows and New Data Resources

Jenna Cullinane Hege

Deputy Assistant Commissioner, Strategic
Planning and Funding

Jenna.CullinaneHege@theccb.state.tx.us

Allison Pennington
Greater Texas Foundation
Pennington, Allison

allisonpennington@greatertexasfoundation.org

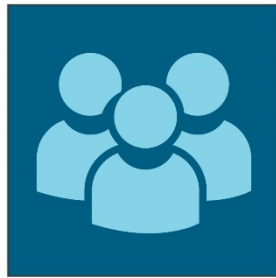


Texas Higher Education
Coordinating Board

SHEEO

November 8, 2017

Texas aims to increase the proportion of residents, ages 25-34, to 60% with a certificate or degree by 2030.

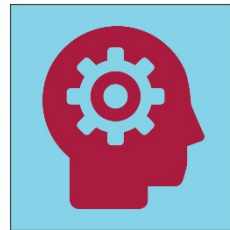


60x30

Educated Population



Completion



**Marketable
Skills**



**Student
Debt**

Data plays a key role in achieving *60x30TX* goals



**WHY
BECAUSE!**



Develop goals

Make the case

Inform & inspire action

Track Progress

Data

Educators dive into THECB data through Data Fellows program

- Training for stakeholders to understand and leverage data resources to support *60x30TX*
 - www.60x30TX.com
 - Accountability system
 - Deeper THECB data analyses
 - Student, parent, and counselor-facing tools



60x30TX Website

www.60x30TX.com



HOME | WHY 60x30TX | GOALS | RESOURCES | EVENTS | THEMES | CONTACT US



MORE DATA

60x30: EDUCATED POPULATION

By 2030, at least 60 percent of Texans ages 25-34 will have a certificate or degree



OVERVIEW

Texas is increasingly engaged in a global economy dependent on skilled and knowledgeable workers. Although Texas is improving college completions among groups of students who traditionally have not earned certificates or degrees in large numbers, the state has not improved quickly or broadly enough to keep up with advances in demographics.

OUR PLAN

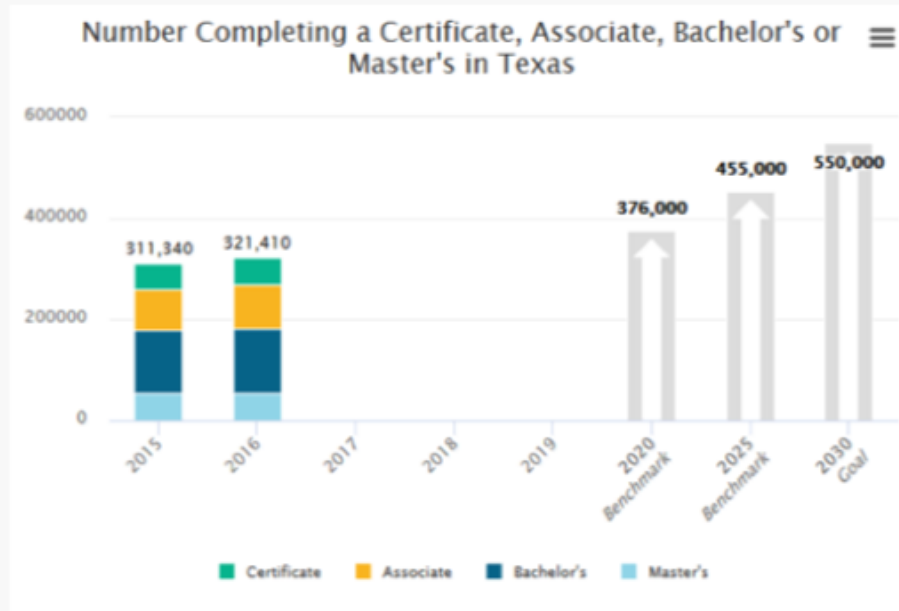
The aim of the 60x30TX higher education strategic plan is to help all students achieve their educational goals, which in turn, will help Texas remain globally competitive for years to come.

ACHIEVING OUR PLAN

The 60x30TX plan contains four broad goals. Success in achieving the goals rests heavily on collaboration among higher education, K-12 education, and the workforce, as well as on the local creativity of Texas two- and four-year institutions.



Completion

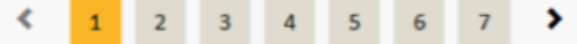


The completion goal contains targets that build toward 550,000 awards earned statewide, solely from two- and four-year colleges in Texas. Growth in certificates and degrees awarded is critical for reaching the 60 percent in the first goal and for educating a skilled workforce.

To ensure progressive improvement of completions throughout the plan years, Texas set statewide benchmarks of 376,000 by 2020 and 455,000 by 2025.

The completion goal helps ensure that growing numbers of Texans, and the state as a whole, reap the personal and economic benefits that come from completing high-quality degrees and certificates.

Regional and institutional efforts are needed to reach the statewide goal.



Accountability System

www.txhigheredaccountability.org

DU:301A Accountability System Home Resources THECB 60x30TX.com Interactive

STATEWIDE

- PUBLIC UNIVERSITIES
- ▶ PUBLIC TWO-YEAR COLLEGES
- PUBLIC HEALTH-RELATED INSTITUTIONS
- ▶ NON-TEXAS & CAREER INSTITUTIONS

Need Help?
Under Resources above, see our [Quick Start Guide](#) if you're new, [Interactive Guide](#) to download data, and [News and Updates](#) for the latest important information.

Select a 60x30TX goal below to see related measures for **Statewide**:

- 60x30: Educated Population**
By 2030, at least 60 percent of Texans ages 25-34 will have a certificate or degree.
- Completion**
By 2030, at least 550,000 students in that year will complete a certificate, associate, bachelor's, or master's from an institution of higher education in Texas.
- Marketable Skills**
By 2030, all graduates from Texas public institutions of higher education will have completed programs with identified marketable skills.
- Student Debt**
By 2030, undergraduate student loan debt will not exceed 60 percent of first-year wages for graduates of Texas public institutions.

Sector-Specific/Other
Used for measures not under the plan goals.

3 View Reports

60X30 **COMPLETION** MARKETABLE SKILLS STUDENT DEBT SECTOR-SPECIFIC/OTHER

Selected Data for Public Universities

C01UH - Degrees and Certificates Awarded 

C01UH- Degrees and Certificates Awarded (Econ Dis)

Degrees and Certificates Awarded (Economically Disadvantaged)

Economically disadvantaged undergraduates receiving a Certificate, Associate Degree or Bachelor's Degree.

	2013	2014	2015	Percent Change
	Count	Count	Count	
Undergraduates Receiving an Award	46,827	48,785	50,579	8.01 %

By learning about the data associated with *60x30TX*, people will come to understand the plan more deeply

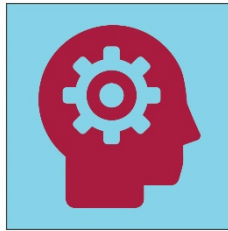


60x30

Educated Population



Completion



**Marketable
Skills**



**Student
Debt**

Data Fellows serve as ambassadors to 60x30TX



- Summer trainings for:
 - K-12 district leaders
 - Higher education association leaders, intermediaries, philanthropic partners
- Fall trainings for:
 - CTCs, November 16
 - Universities, November 17

Training promoted hands-on exploration and discussion

- Data Walk
- Hands-on exploration of data resources
- Small and large group discussion of plan strategies
- Support for dissemination



Training promoted hands-on exploration and discussion

- Data Walk
- Hands-on exploration of data resources
- Small and large group discussion of plan strategies
- Support for dissemination

“The THECB has a lot more data than I thought! Knowing this will help us avoid reinventing the wheel when we're looking for information.”

“By giving time to get in and ‘play’ with the data, it will make it easier to decide the key parts that will be most beneficial to share with others in my district.”

Perspectives from a Data Fellow

- Background
- Overview of the Data Fellows experience
- Benefits of Data Fellows

Data Fellows Post-Training Presentation Highlights

45 Data Fellows

- Post-training commitment to present material to respective organizations

Created awareness with 800 people

- 92% of Data Fellows directed audiences to 60x30tx.com
- Average audience size was 68 attendees
- The larger the audience, the more likely presenter invited to share information again

Data Fellows Positive Return-on-Investment

Valued by diverse audiences

- 100% of audiences found the information on higher education data valuable

Data Fellows Testimonials

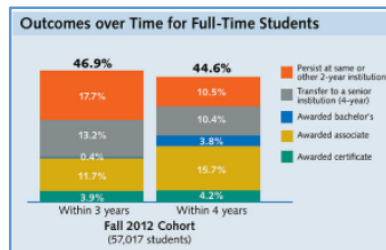
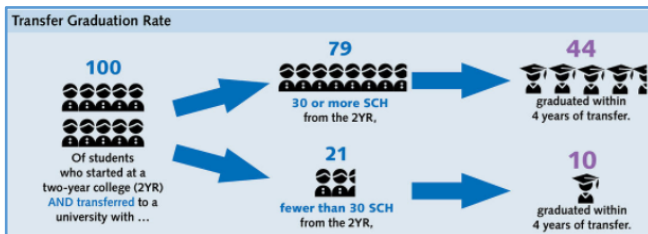
- “As a result of my presentation, some of my colleagues have used it in their own training.”
- “It was a valuable experience for me to learn about *60X30TX* so I can incorporate this information into all of my conversations/presentations regarding how the work we do fits with postsecondary readiness.”

Data Fellows provide insights to THECB about *60x30TX* in the field

- Provided recommendations to enhance our data tools
- Surfaced misunderstandings about the plan and terminology across sectors
- We need to continue to make the case for growing the educated population
- People hungry for strategies and how to “plug in”
 - Regional targets & starter kit

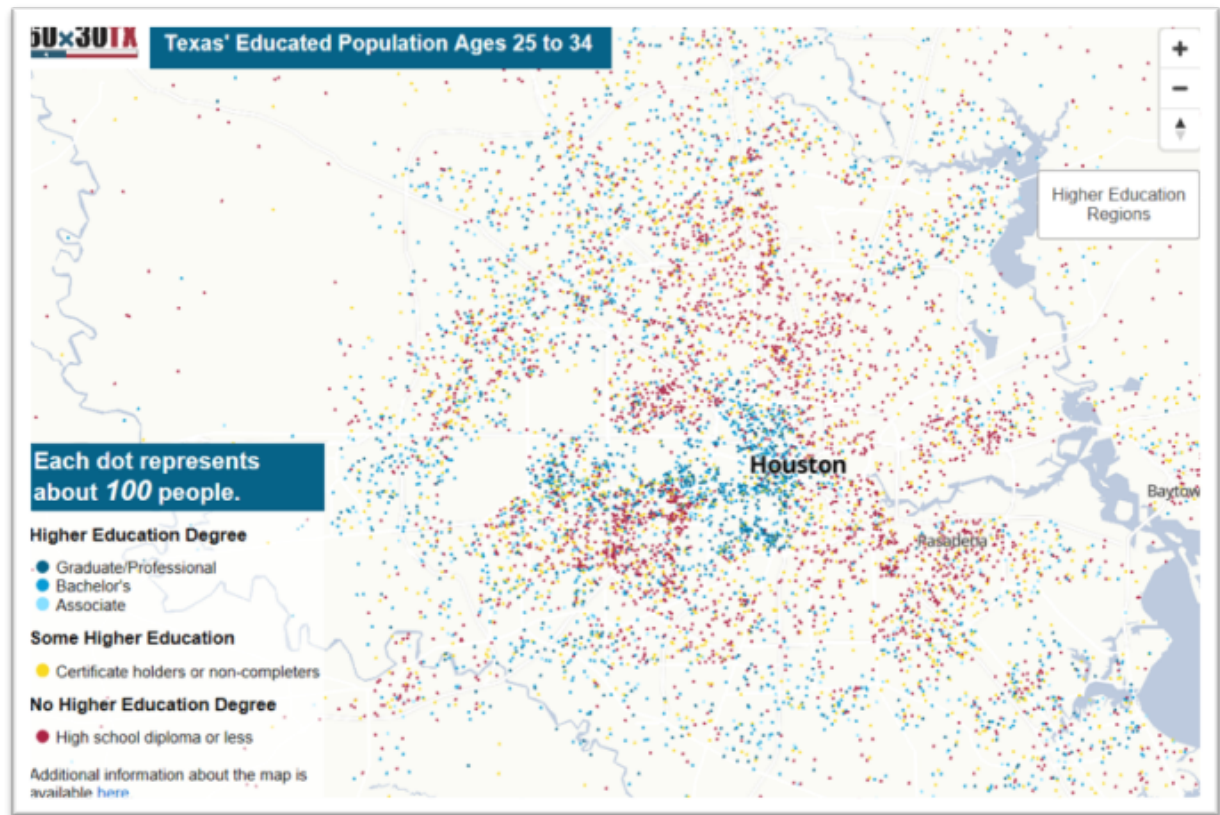
There are many ways the THECB shares state data

- Almanac



There are many ways the THECB shares state data

- Interactive attainment map



There are many ways the THECB shares state data

- Education Research Center



The screenshot shows the Texas Schools Project website. At the top left is the UTD logo (The University of Texas at Dallas) and the text 'Texas Schools Project' and 'State of Texas Education Research Center'. A navigation bar includes links for 'TSP Home', 'About', 'UTD-ERC', 'Center for Research on Ed Policy', 'Research', 'News', and 'Contact'. The main content area features a photo of a diverse group of children and a woman. Below the photo is a quote from John Kain, TSP Founder, and a paragraph describing the project's mission. To the right of the photo is a section titled 'TSP Home' with a link 'tsp home >' and a bolded heading: 'A national model for using longitudinal data to conduct rigorous education research.' Below this is a paragraph explaining that the project supports independent, high-quality academic research using individual level administrative data from Texas state education agencies. Another paragraph states that over the past decade, the project has become a premier education research institution, working with leading researchers to analyze policy-related questions. A final paragraph notes that in 2006, the project was designated as a State of Texas Education Research Center, maintaining an unparalleled source of PK-16 data.

Questions or Comments?