



# SHEEO

STATE HIGHER EDUCATION EXECUTIVE OFFICERS ASSOCIATION

## The State of State Postsecondary Data Systems

---

John Armstrong – Policy Analyst

Christina Whitfield – Associate Vice President

## SHEEO Members

### Alabama

**Alabama Commission on Higher Education**

Jim Purcell

Executive Director

[View Member Website](#)

### Alaska

**Alaska Commission on Postsecondary Education**

Stephanie Butler

Executive Director

[View Member Website](#)



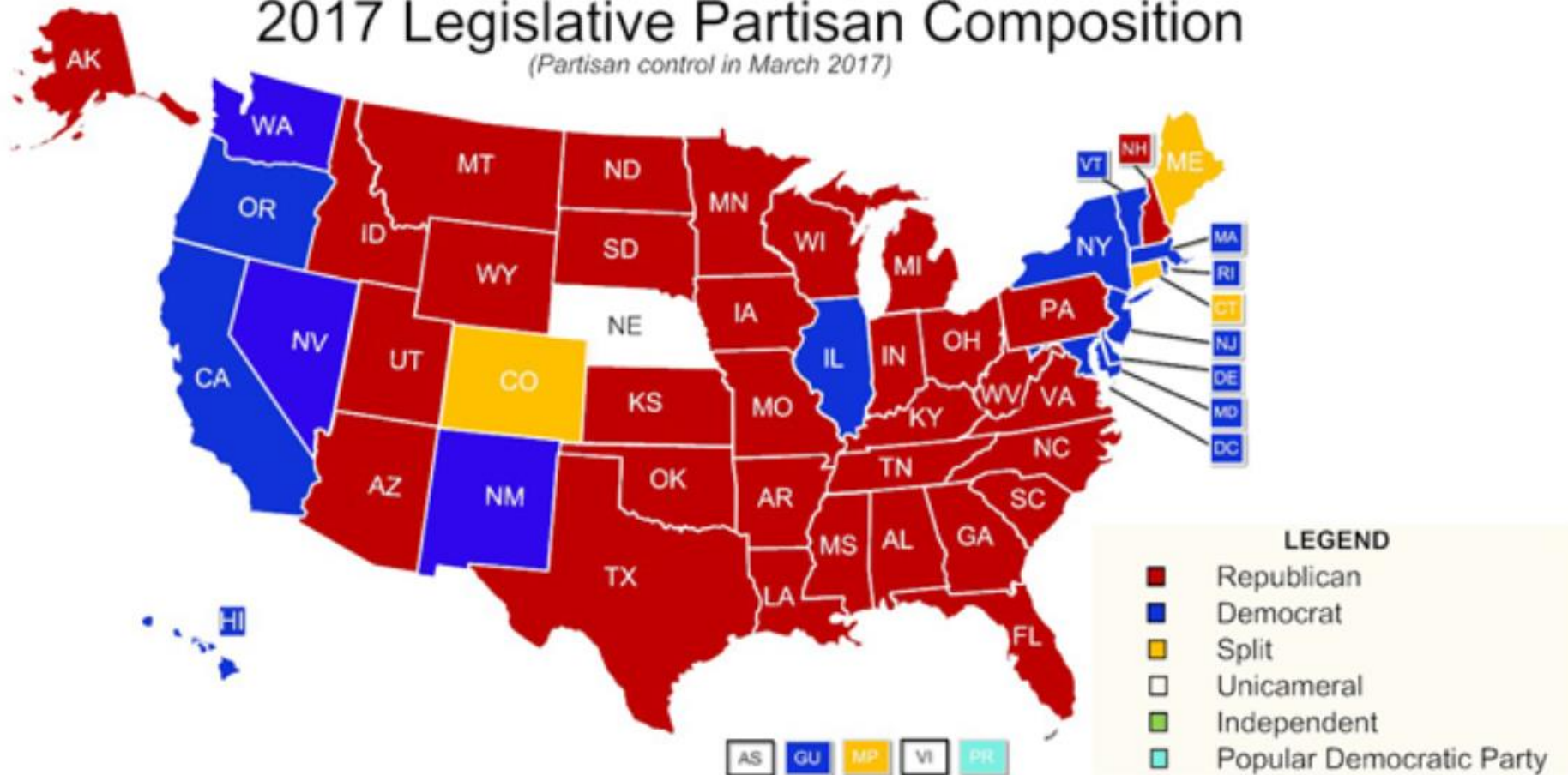
Created by Ilya Gerner  
ilyagerner.tumblr.com

Blank Map Courtesy of:

Produced by the Cartographic Research Lab  
University of Alabama

## 2017 Legislative Partisan Composition

(Partisan control in March 2017)



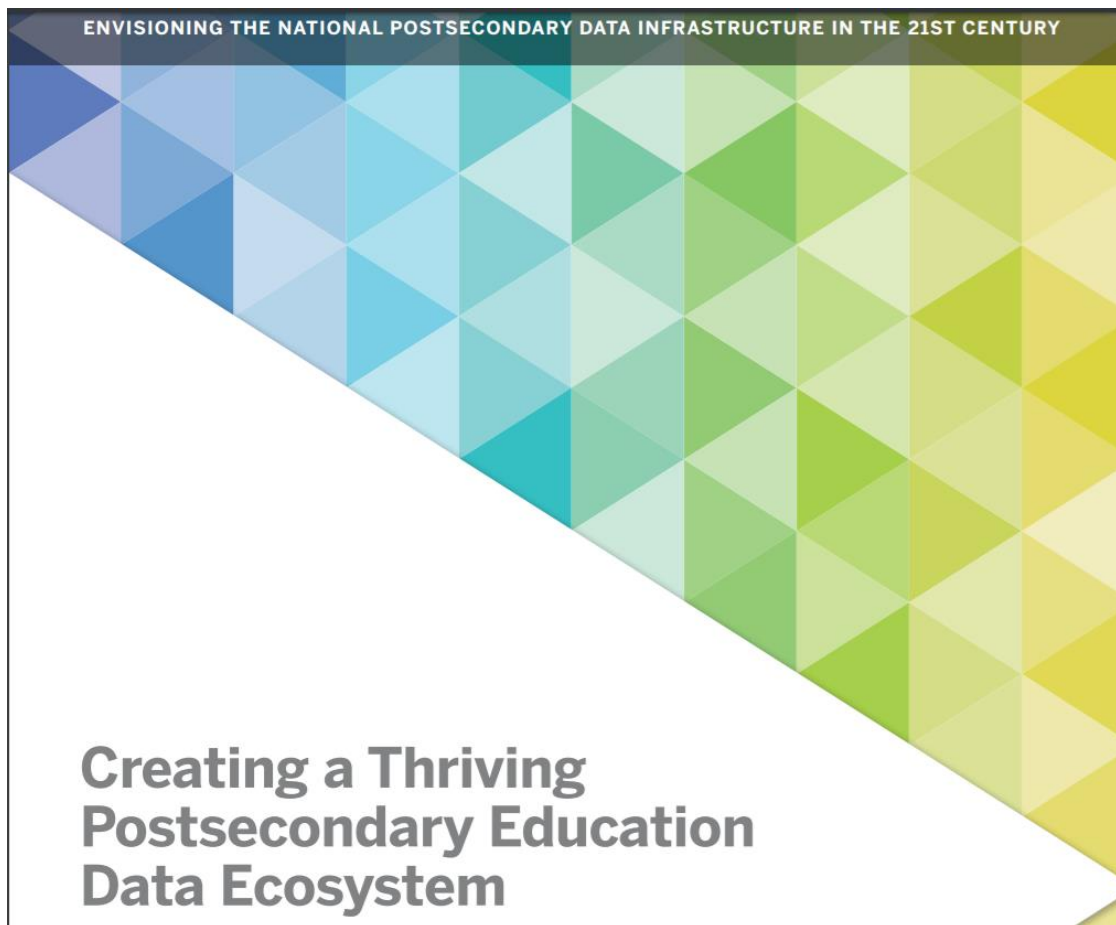
Source: National Conference of State Legislatures

## Presentation Goals

- The Postsecondary Data Environment
- What State-Level Postsecondary Systems Collect and How they are Used
- Conditions for effective use of State-Level Postsecondary Data
- State Examples

# NATIONAL POSTSECONDARY DATA INFRASTRUCTURE

[www.ihep.org/postsecdata](http://www.ihep.org/postsecdata)



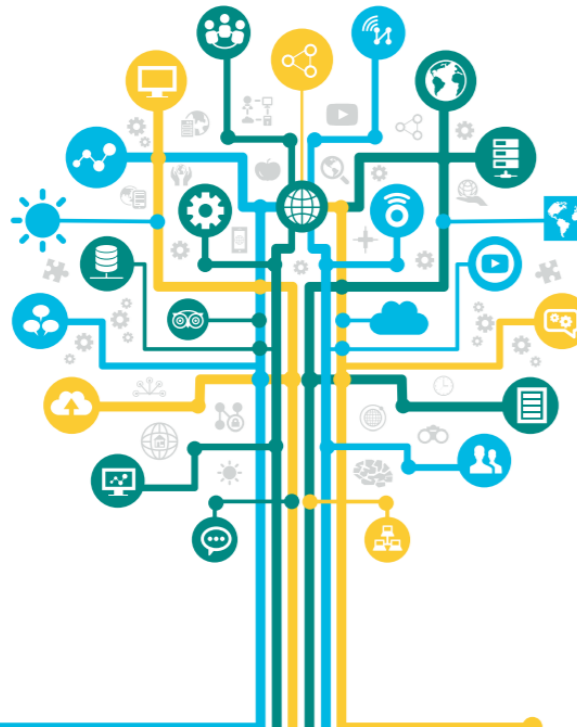
# POSTSECONDARY STUDENT UNIT RECORD SYSTEMS

---

## THE STATE OF STATE POSTSECONDARY DATA SYSTEMS

## STRONG FOUNDATIONS 2016

JOHN ARMSTRONG  
CHRISTINA WHITFIELD



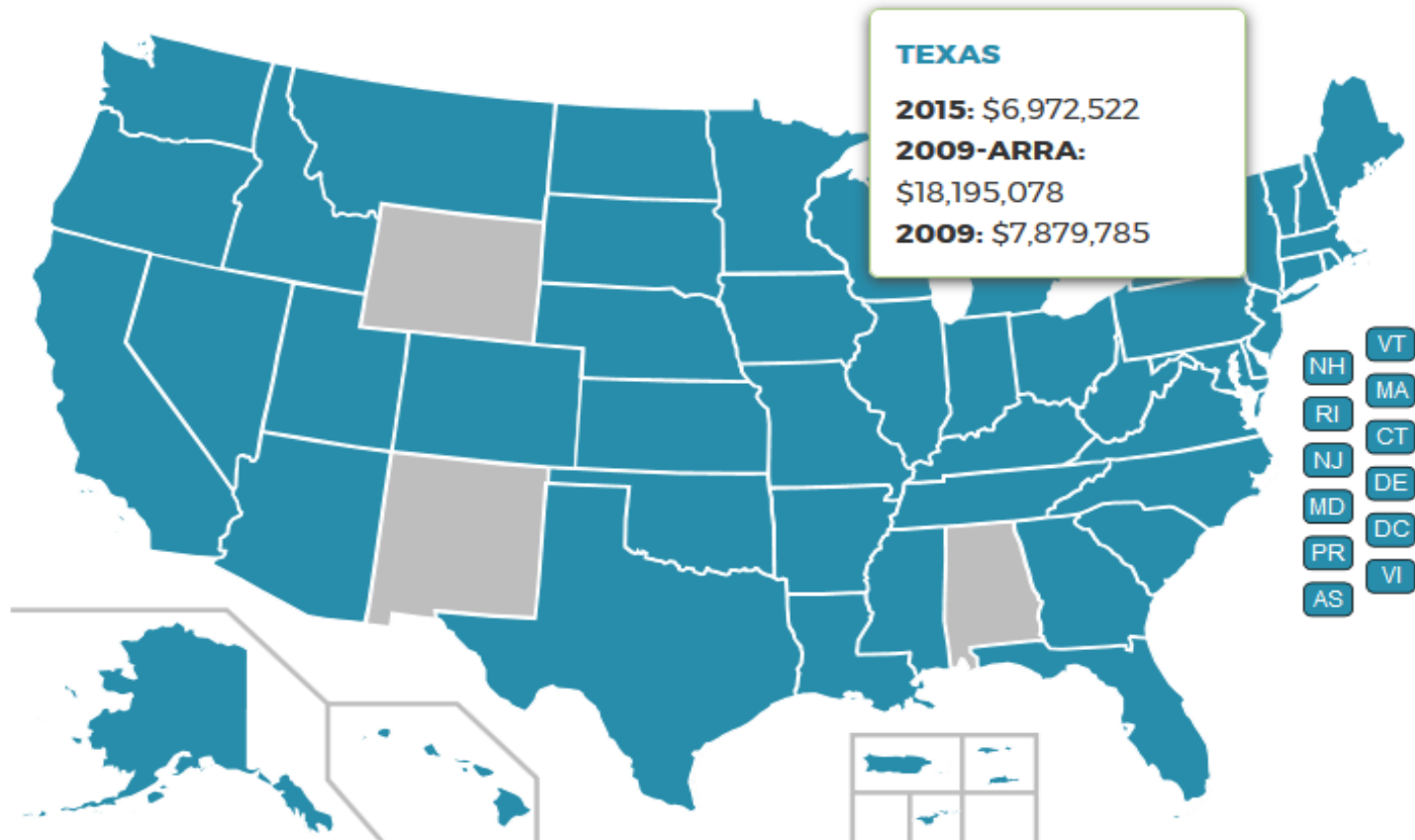


## Process of Survey and Iterations

- SHEEO member agencies responded to a survey instrument in late 2015.
- Agencies were asked about the structure of their data systems, sectors covered, data elements collected, ensuring privacy and use cases.
- SHEEO released *The State of State Postsecondary Data Systems* in summer of 2016.
- Previous *Strong Foundations* reports were released in 2010 and 2012

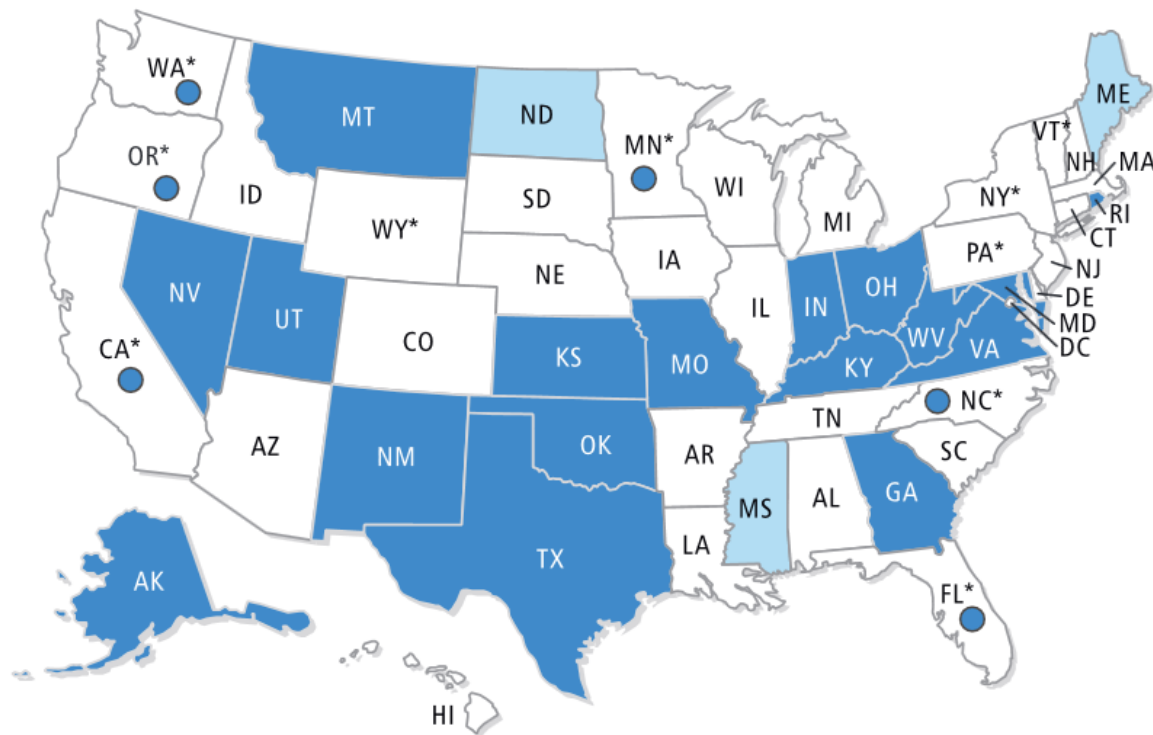


# SLDS Grant Awards



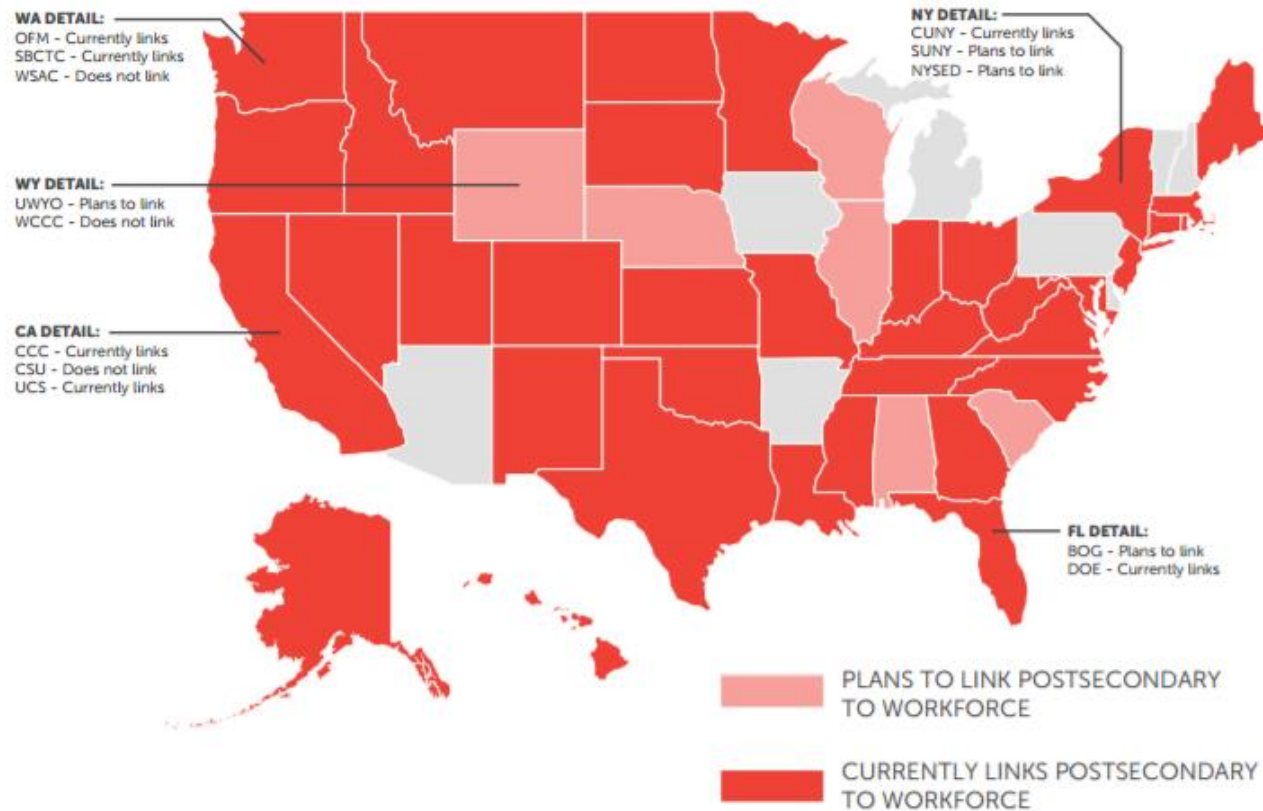
# Workforce data elements - 2010

Figure 15: Twenty-four SURs in 23 states with access to labor elements from labor agency

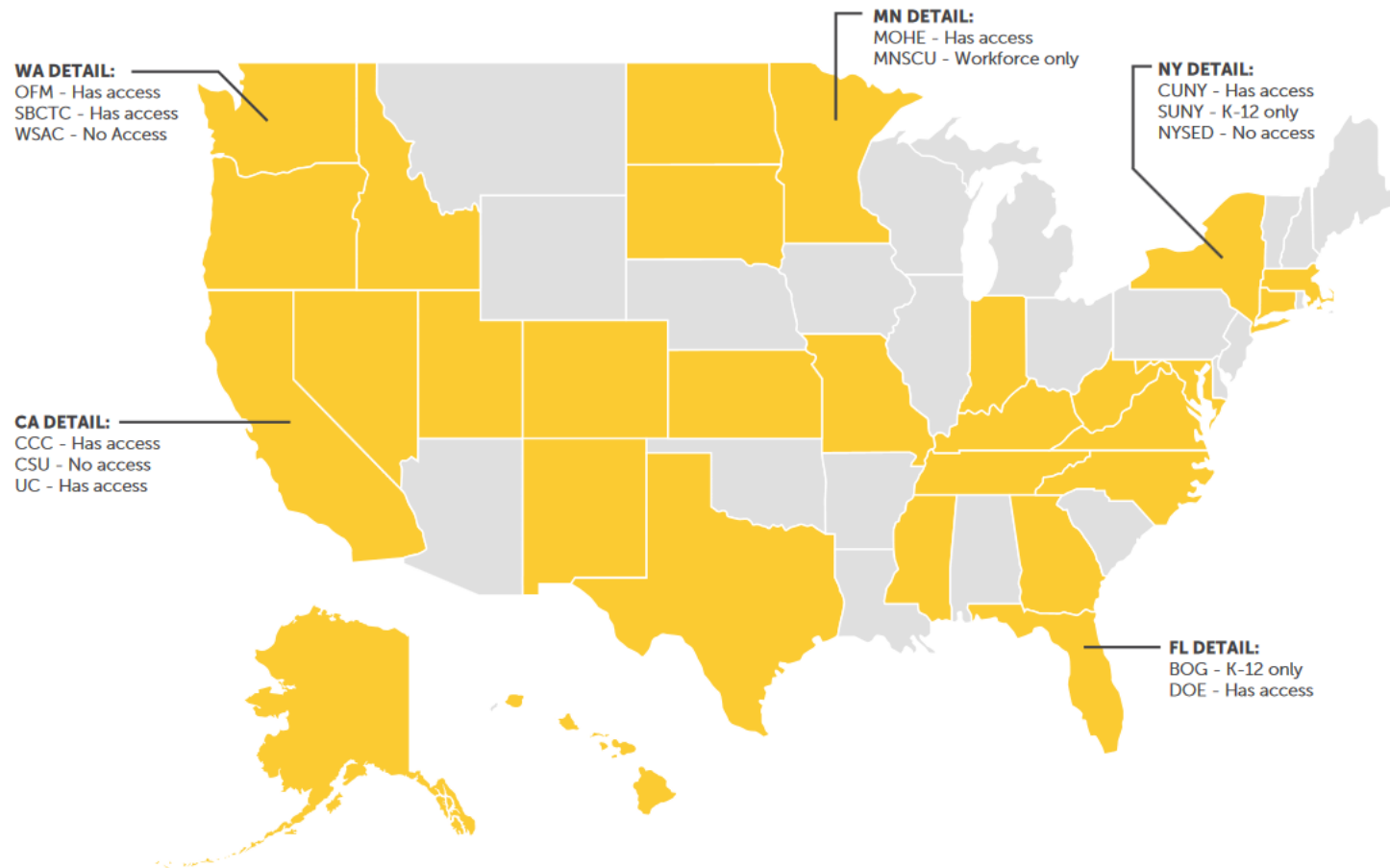


# Workforce data elements - 2016

**FIGURE 2 — 47 AGENCIES IN 42 STATES CURRENTLY LINK OR PLAN TO LINK POSTSECONDARY TO WORKFORCE DATA**

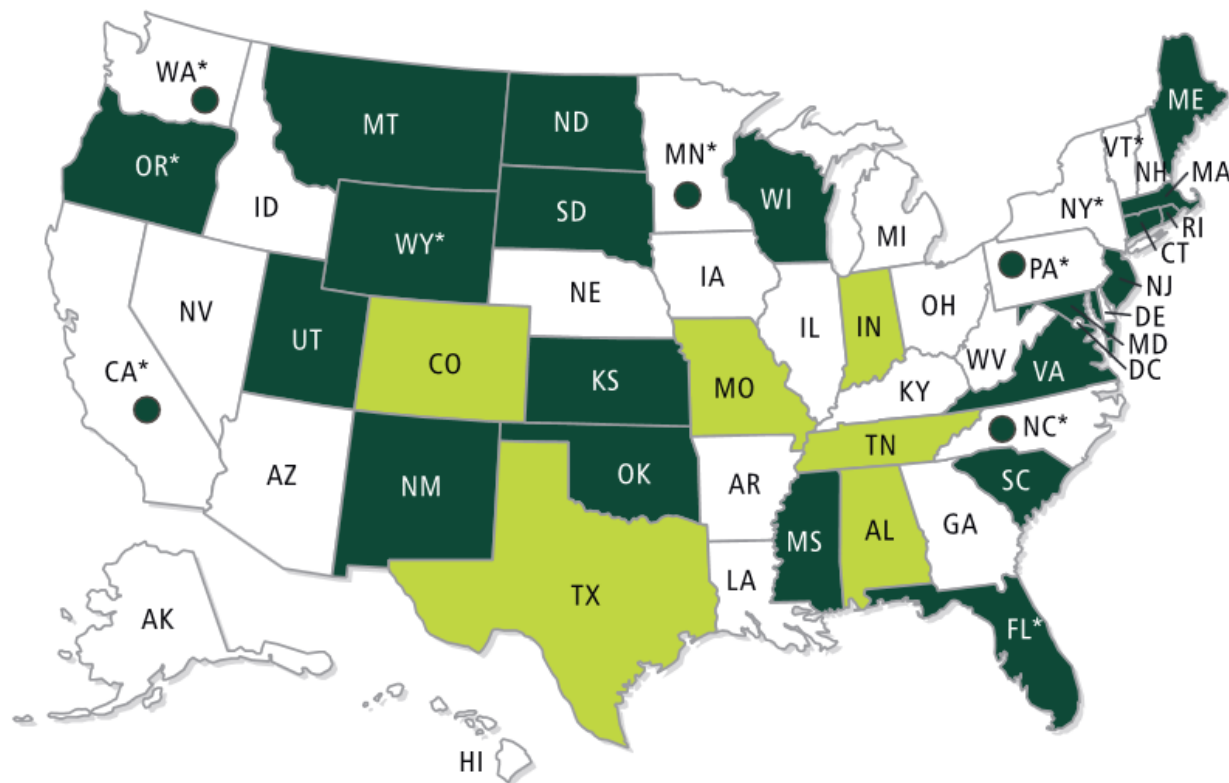


**FIGURE 4 — 29 STATES' POSTSECONDARY AGENCIES CURRENTLY HAVE ACCESS TO K-12 AND WORKFORCE DATA**



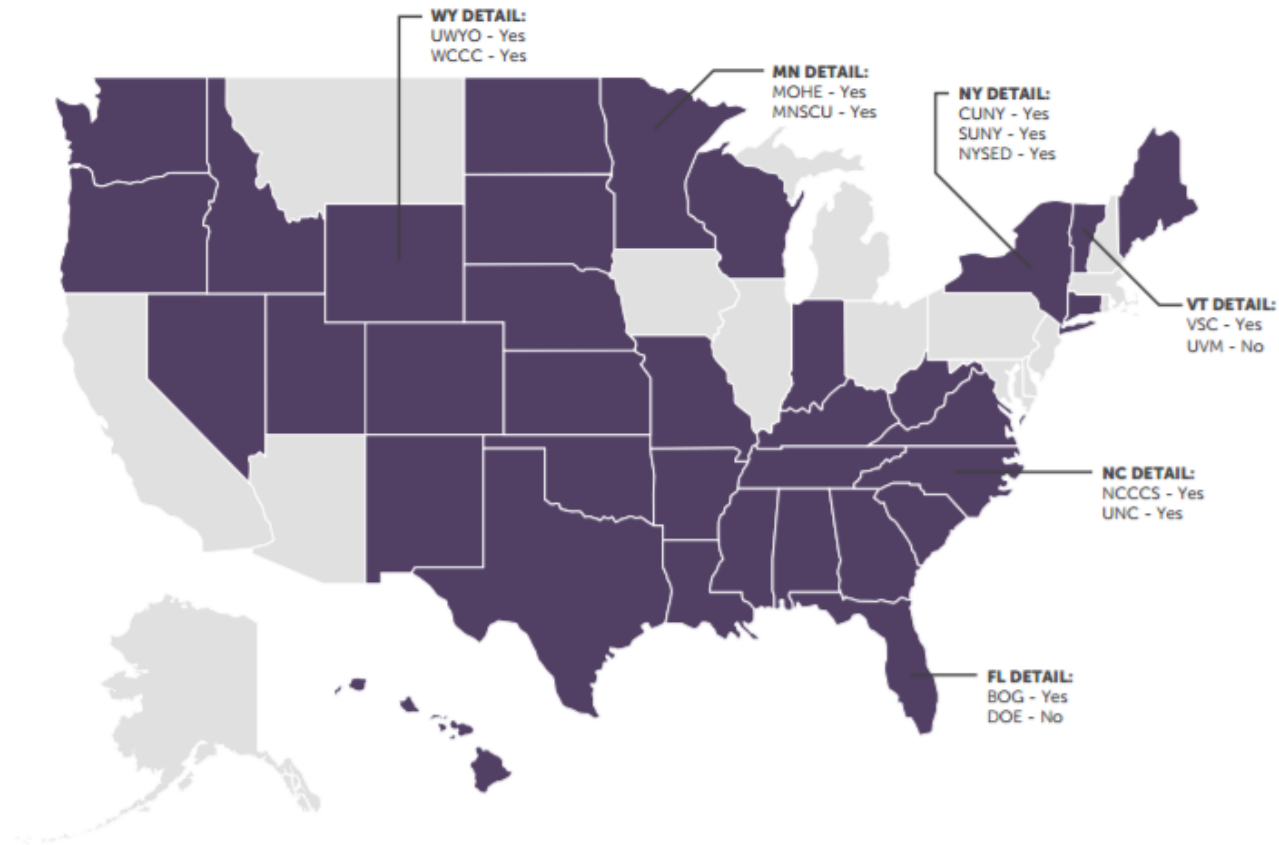
## Remedial Data Access - 2010

Figure 9: Twenty-nine SURs in 25 states with course-level data on remedial courses



# Remedial Data Access - 2016

**FIGURE 7 — 41 AGENCIES IN 35 STATES HAVE REMEDIAL OR DEVELOPMENTAL COURSE INFORMATION INCLUDED IN THEIR UNIT RECORD SYSTEM**



# What's the Value?

- **Efficiency gains**

According to South Dakota, unified collection of unit record data leads to efficiency gains at the campus level and higher internal and external confidence in analyses

- **Student Success**

Research on student outcomes sets policy decisions, including setting test scores for college readiness, increasing completions, and analyzing workforce outcomes

- **Policy Development**

From anecdotal decision-making, to data-driven decision making.



## Conditions for Effective Use of State Data Systems

- Ensure Privacy and Security
- Address perceived barriers
- Promote Sustainability
- Stakeholder Engagement

## Examples of Use – White Paper Series

- Performance funding data – TENNESSEE

TN collects demographic data and awards premiums to completions for sub-populations, including adult students, low-income students and remedial students

- Workforce Outcome of Graduates – TEXAS

See [www.utsystem.edu/seekut](http://www.utsystem.edu/seekut)

- Teacher Preparation– NORTH CAROLINA

North Carolina reports regional trends in educator preparation and has an interactive dashboard with a variety of indicators on teacher quality.

## More Examples of Effective Use

- South Dakota Board of Regents
- [www.sdbor.edu/dashboards](http://www.sdbor.edu/dashboards)
- Protecting Student Privacy – Arkansas Research Center

## Findings of paper

- PSURS are adaptive, flexible state-level systems that respond to the unique policy needs of the state.
- New topics of import to many states include performance funding, improving remediation, counting all completers and workforce outcomes.
- Linkages between postsecondary and K-12 / Workforce unit record systems have expanded dramatically
- Examples of PSURS best practices

## State Recommendations

- Invest in Postsecondary Student Unit Record Systems (PSURS) and improve them by adopting best practices
- Tie PSURS to strategic planning and involve leadership from multiple constituencies, including IR!
- Expand usage of the systems
- Address privacy concerns

## Federal Recommendations

- Greater focus on outcomes for SLDS and WDQI
- Improved matching to federal datasets
- Presenting state context at the federal level
- Involve states in a federal unit record system, if developed

## DISCUSSION

- What flows from the institutions to the state?
- What flows from the state to the institutions?
- Do you use your state data system? For what purpose?
- What would improve the interaction between institutions and the state?



## CONTACT INFORMATION

- [john@sheeo.org](mailto:john@sheeo.org); cwhitfield@sheeo.org
- 303-541-1610; 303-541-1601