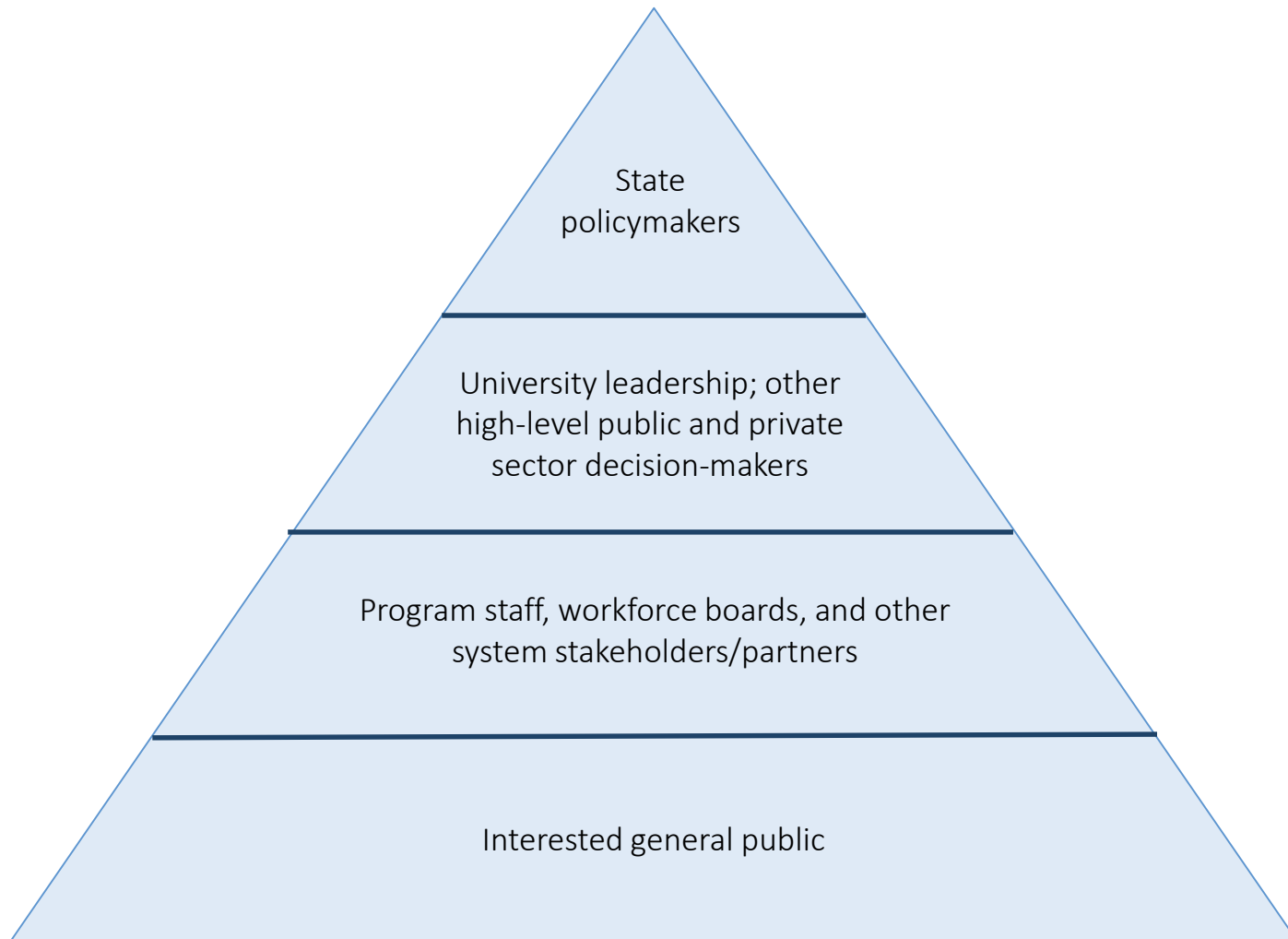


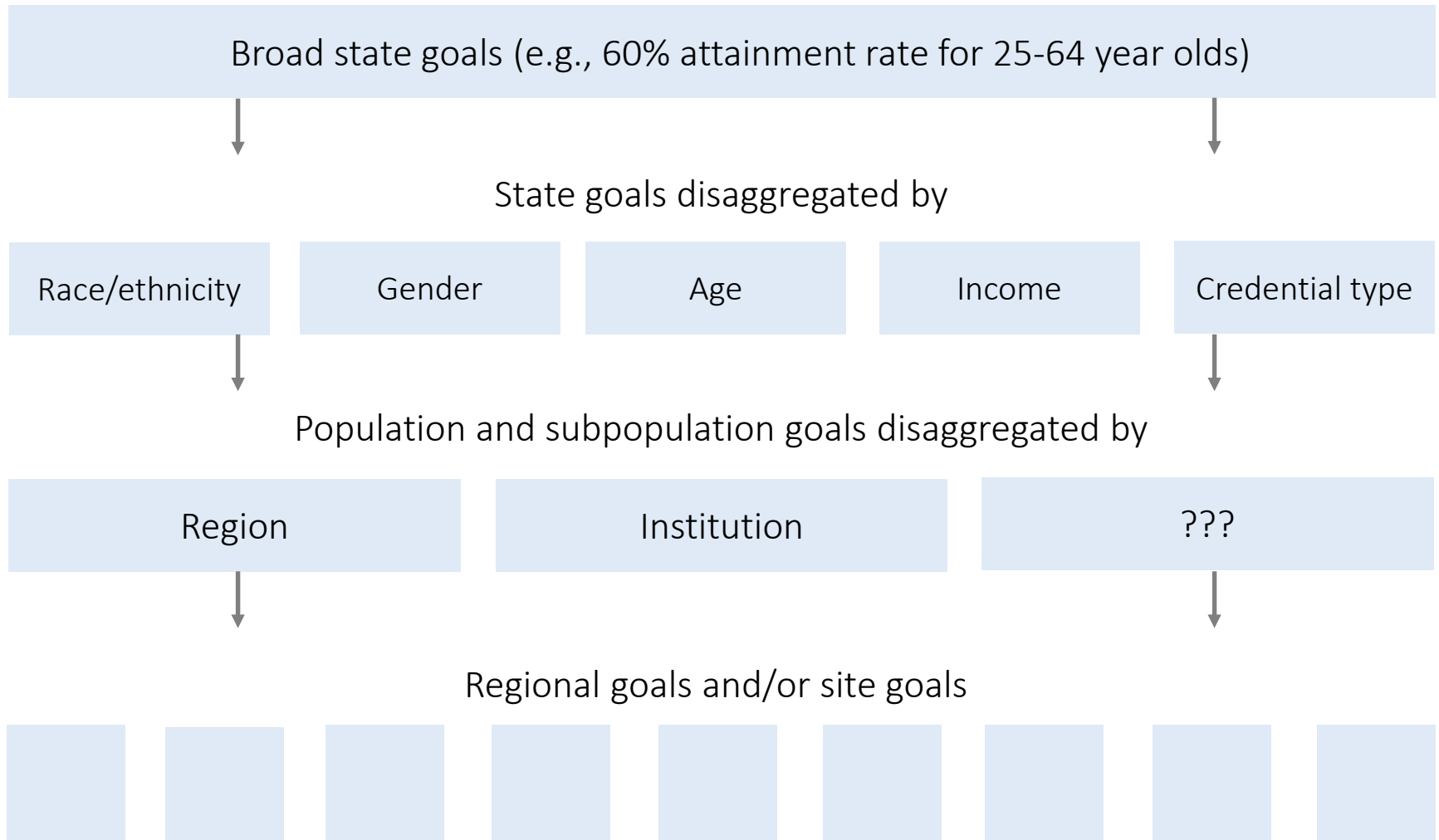
Translating ambitious goals into local action

September 27, 2018

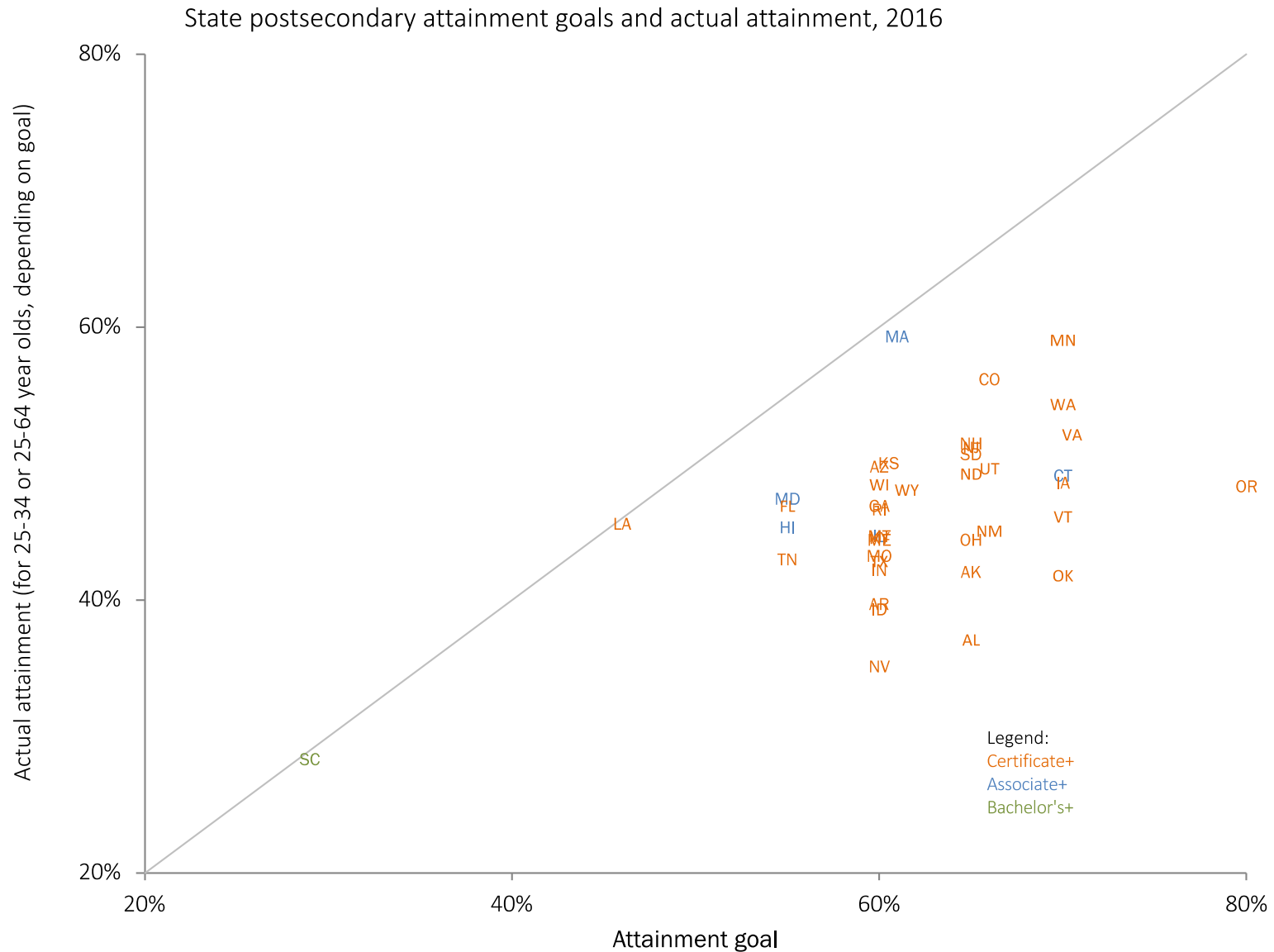
Translating the goal: Potential audiences



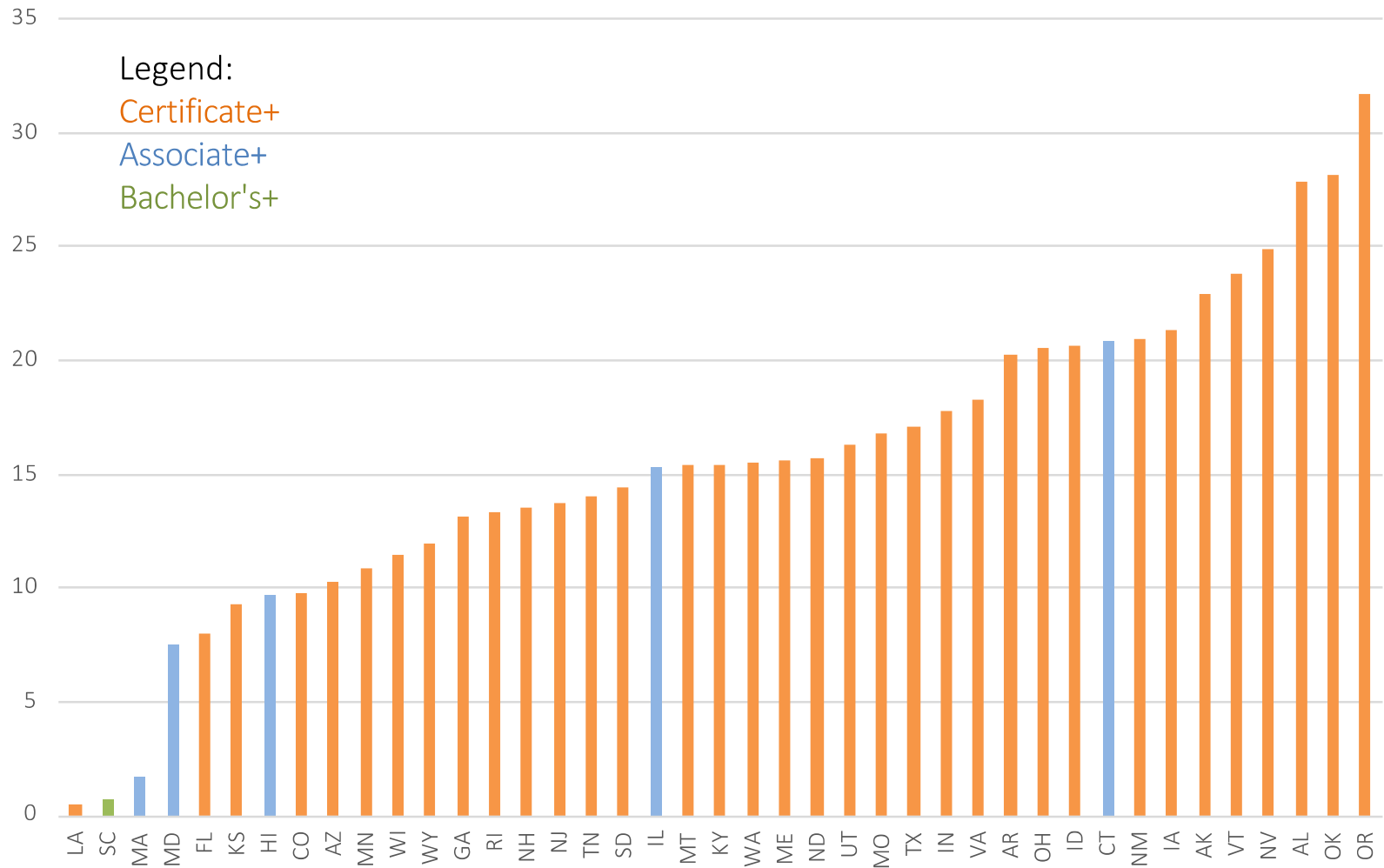
Making a broad state goal actionable



State-level goals versus current state-level attainment

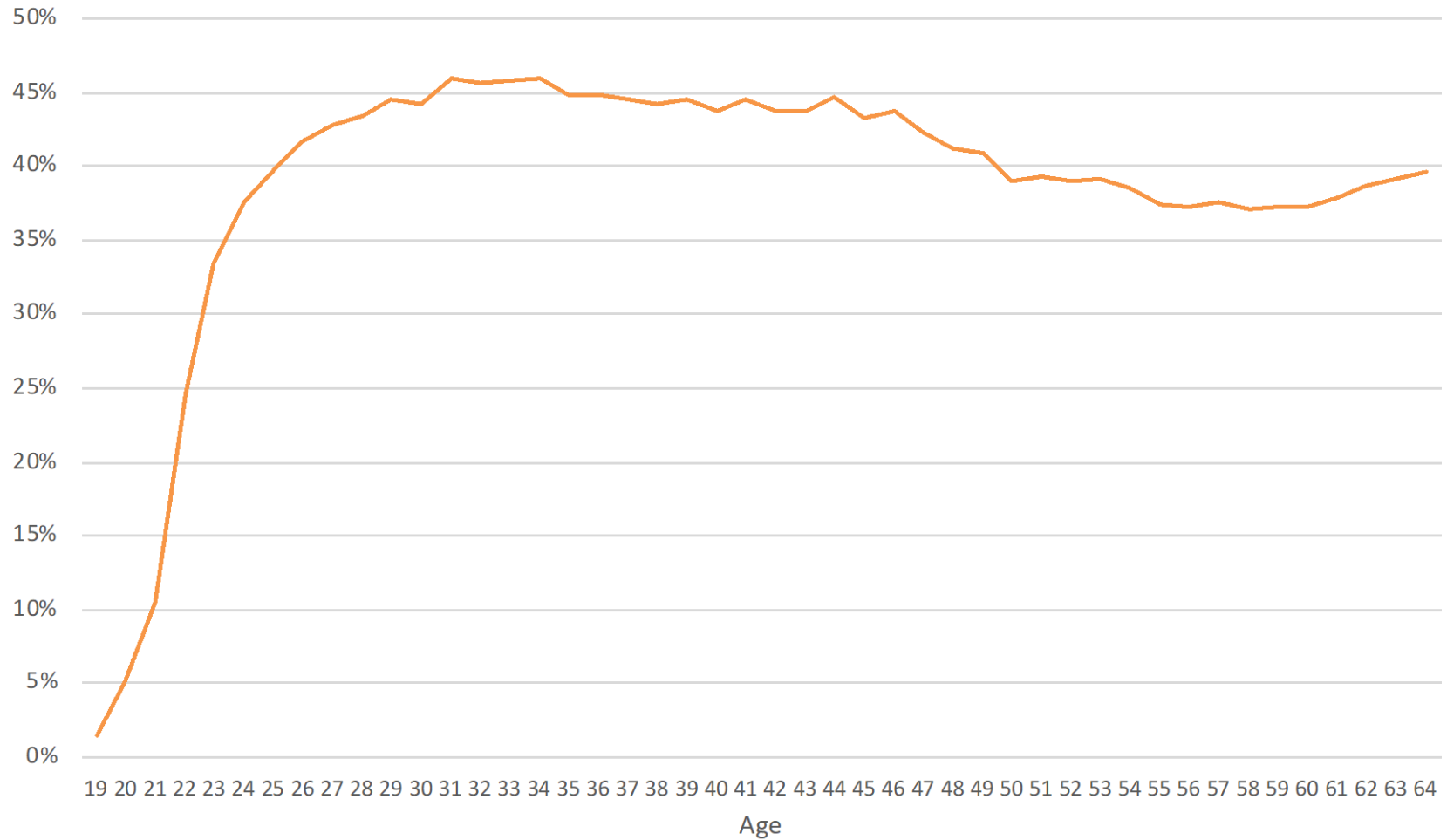


Gaps between state-level goals and current state-level attainment (percentage points)

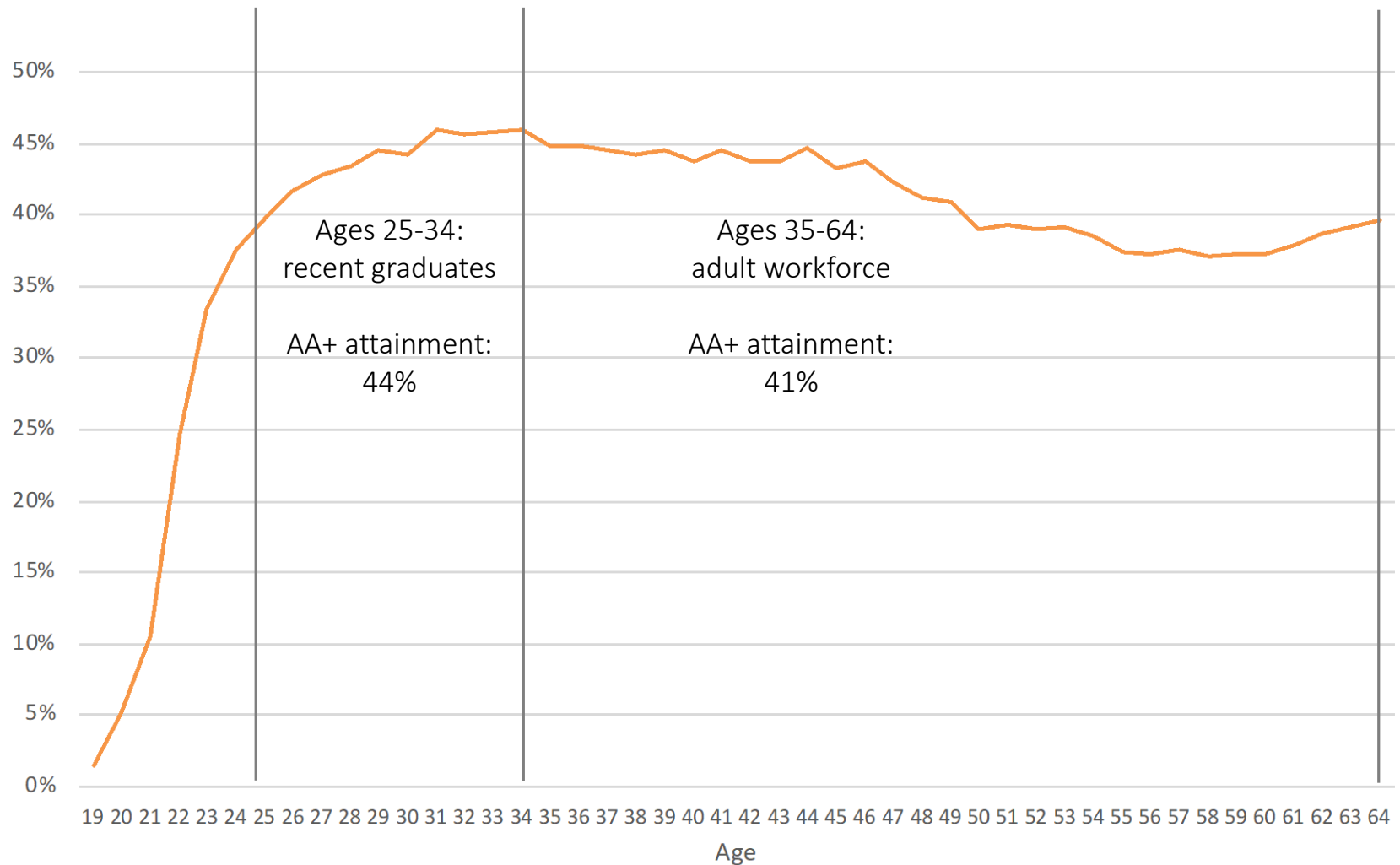


Evaluating the overall ambition:
age, migration, and past performance

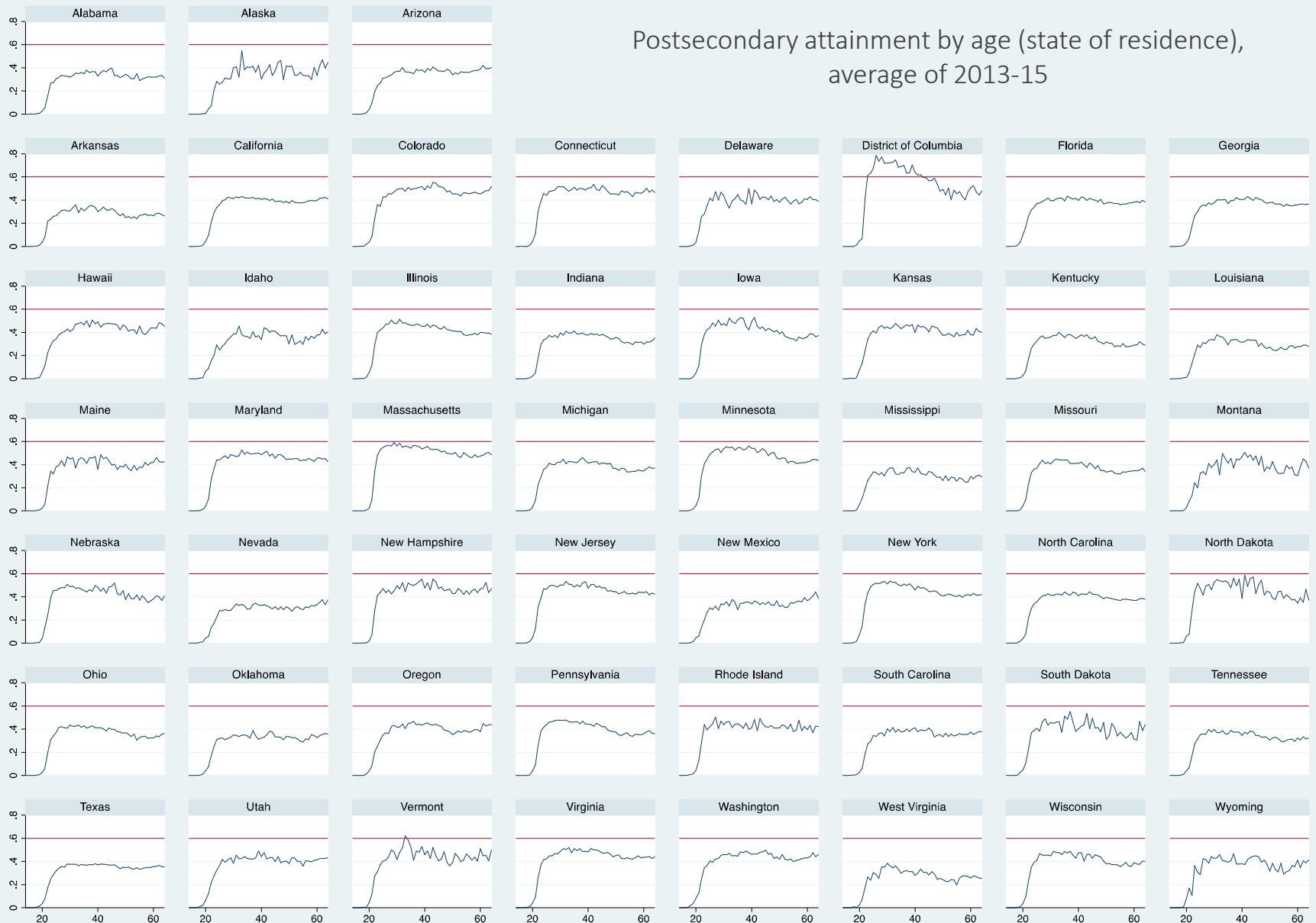
U.S. postsecondary attainment (associate+) by age, 2016



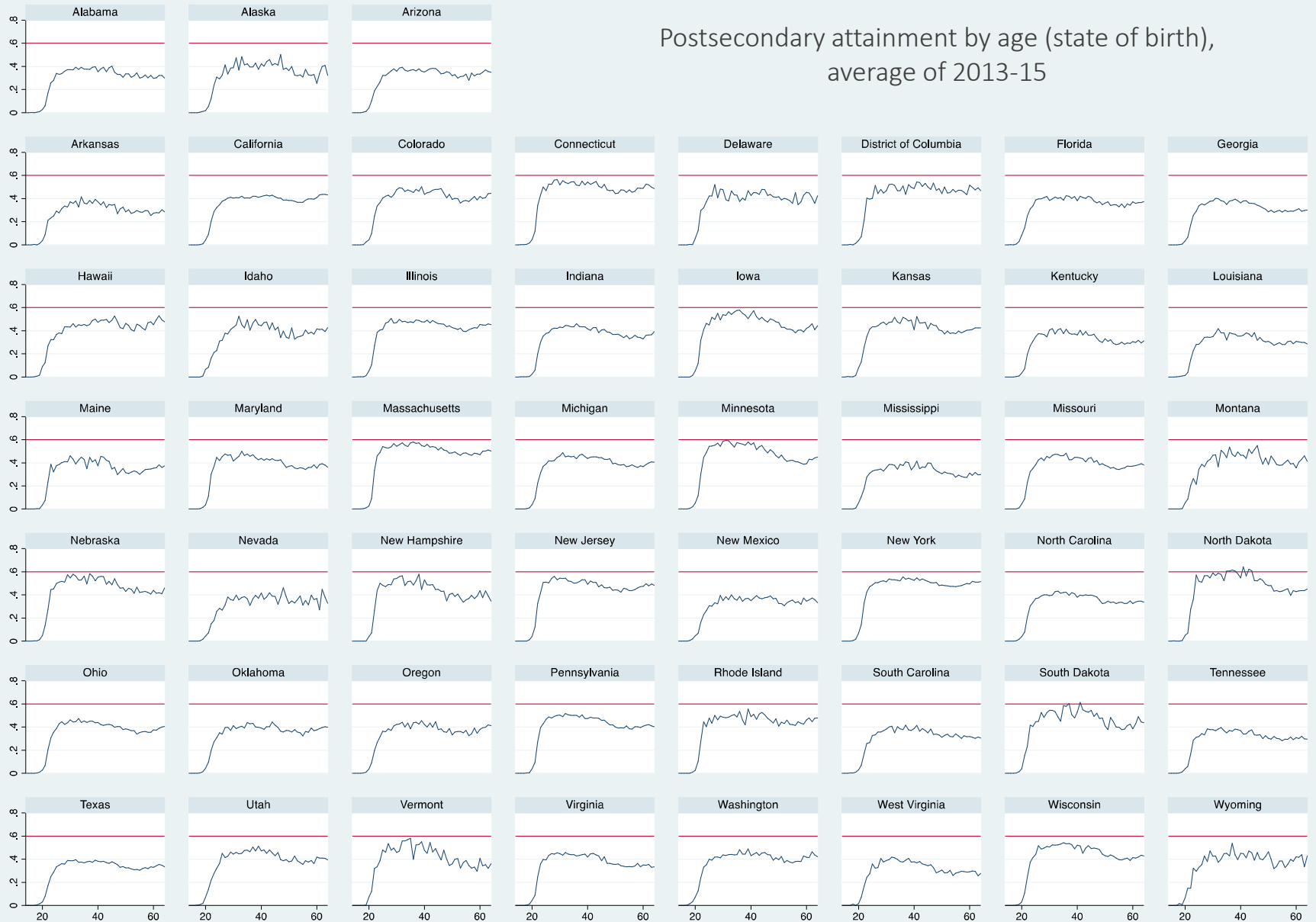
U.S. postsecondary attainment (associate+) by age, 2016



Postsecondary attainment by age (state of residence), average of 2013-15



Postsecondary attainment by age (state of birth), average of 2013-15

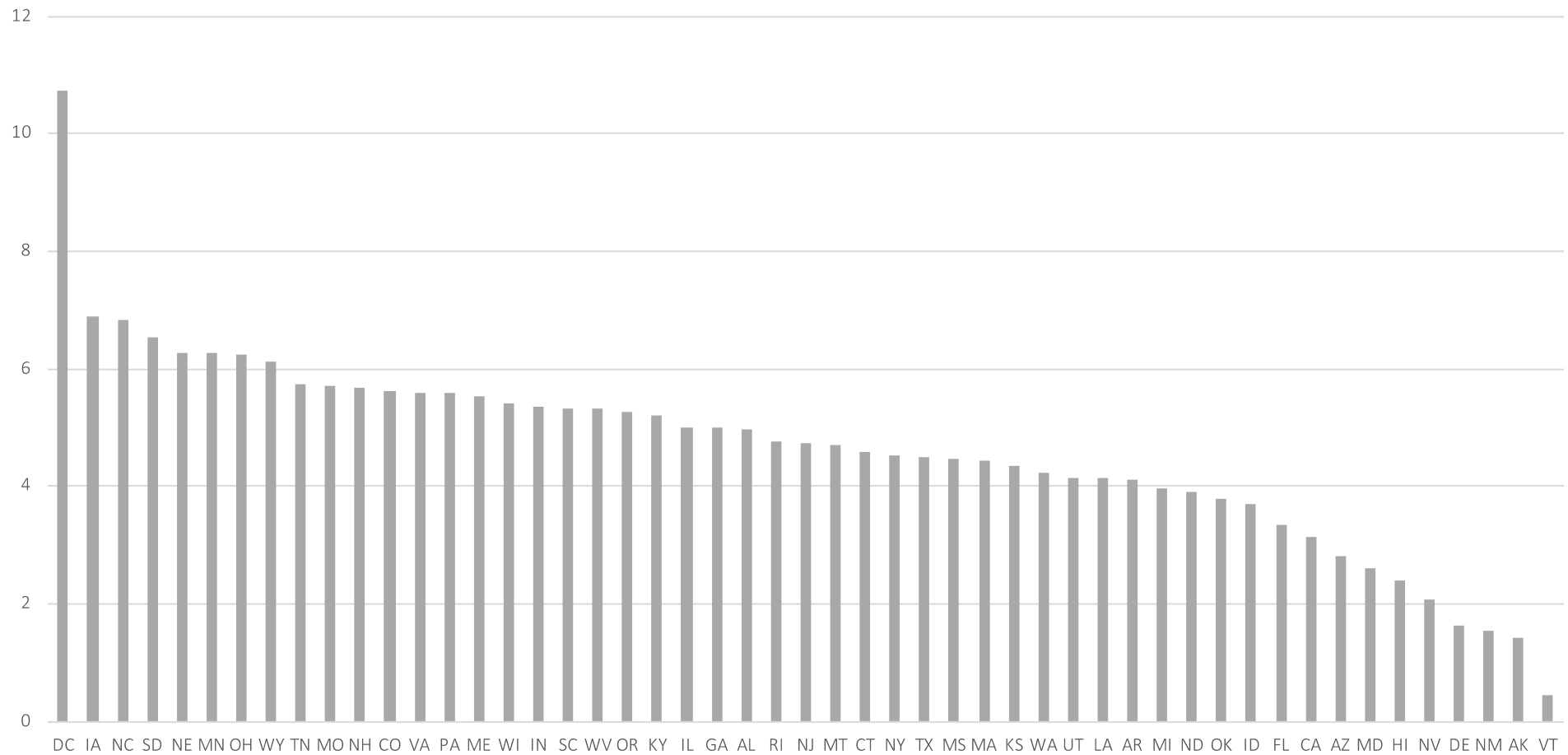


Population with associate degree or better by age and year, Oregon



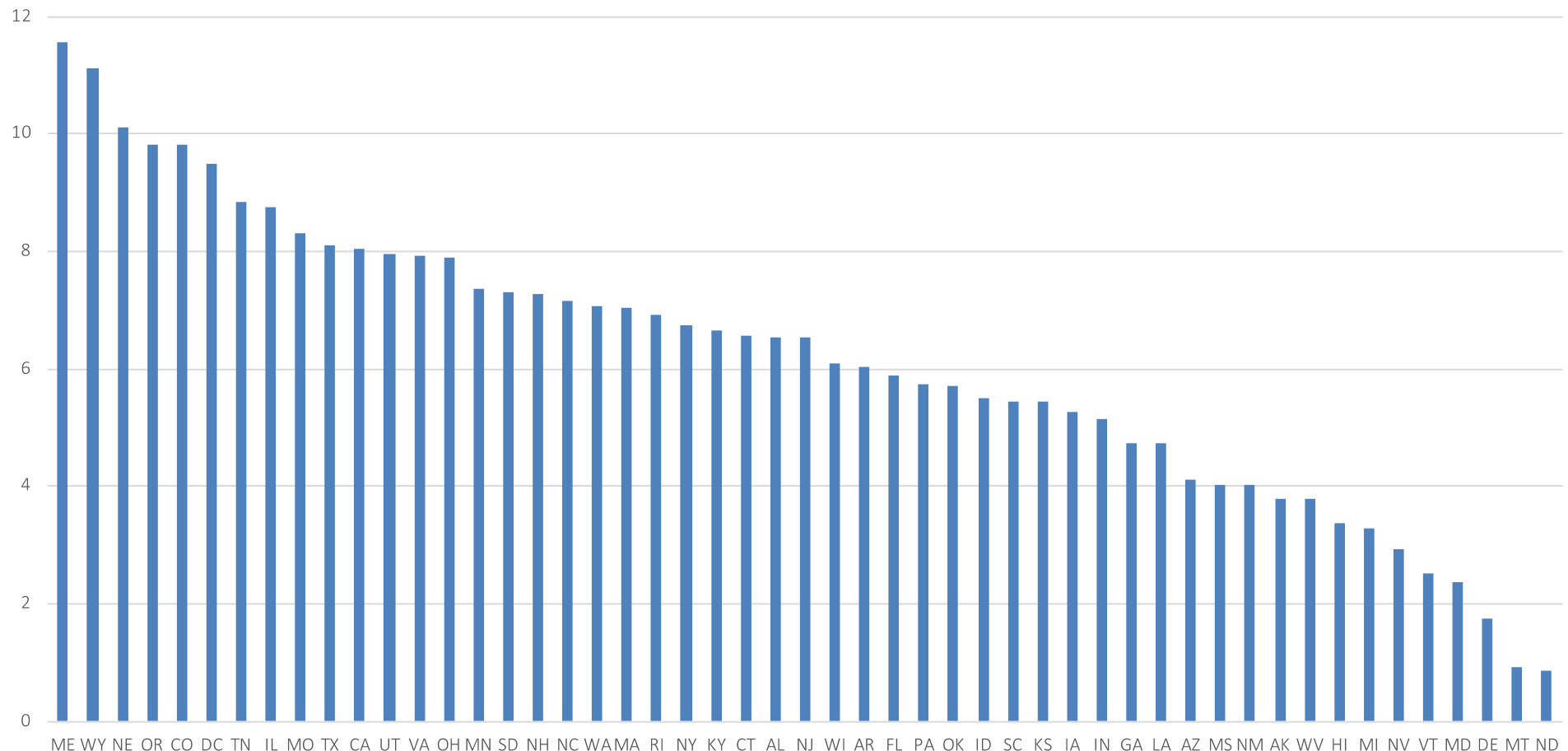
What's feasible?

Percentage point change in attainment (associate+) by state, 2006-2016, ages 25-64



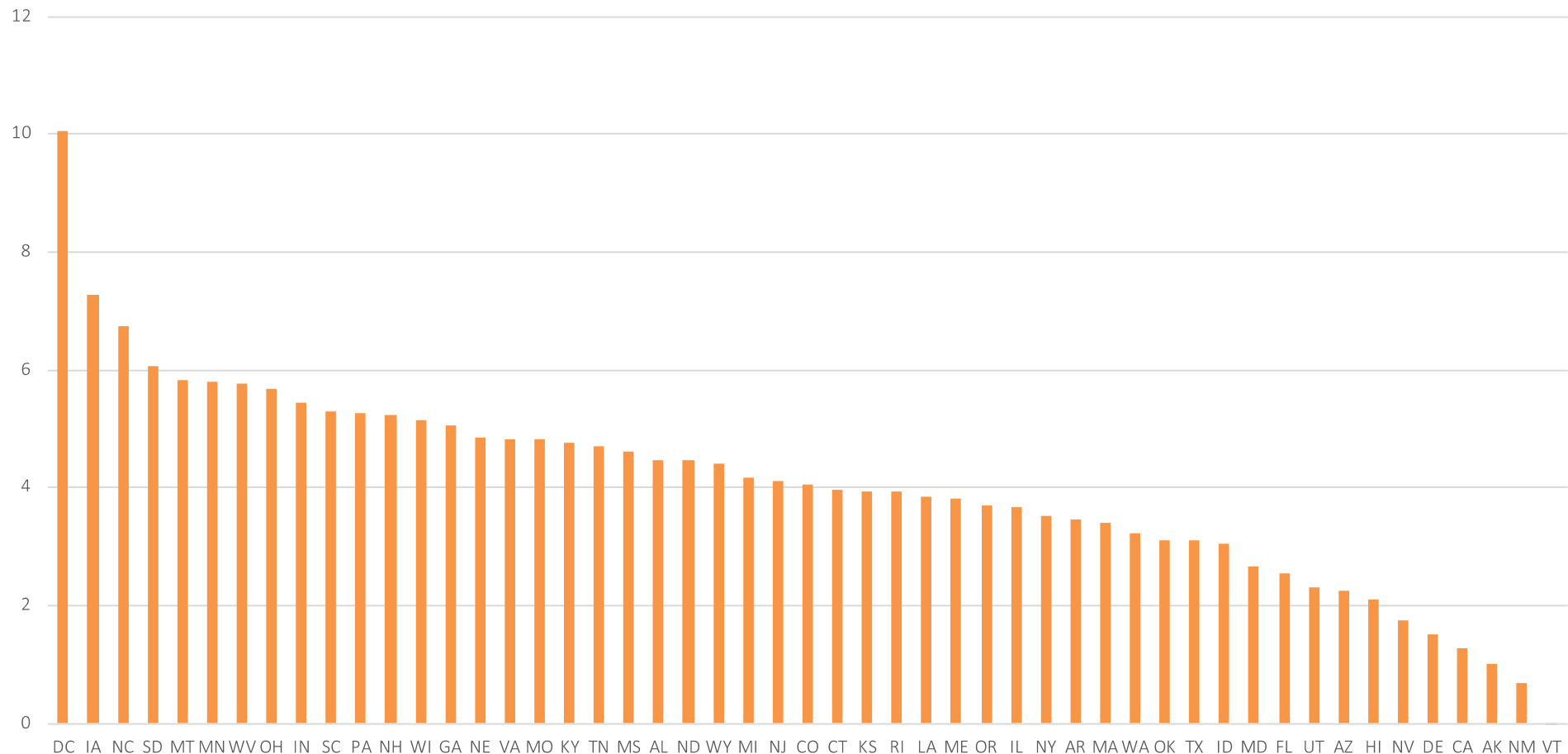
What's feasible?

Percentage point change in attainment (associate+) by state, 2006-2016, ages 25-34

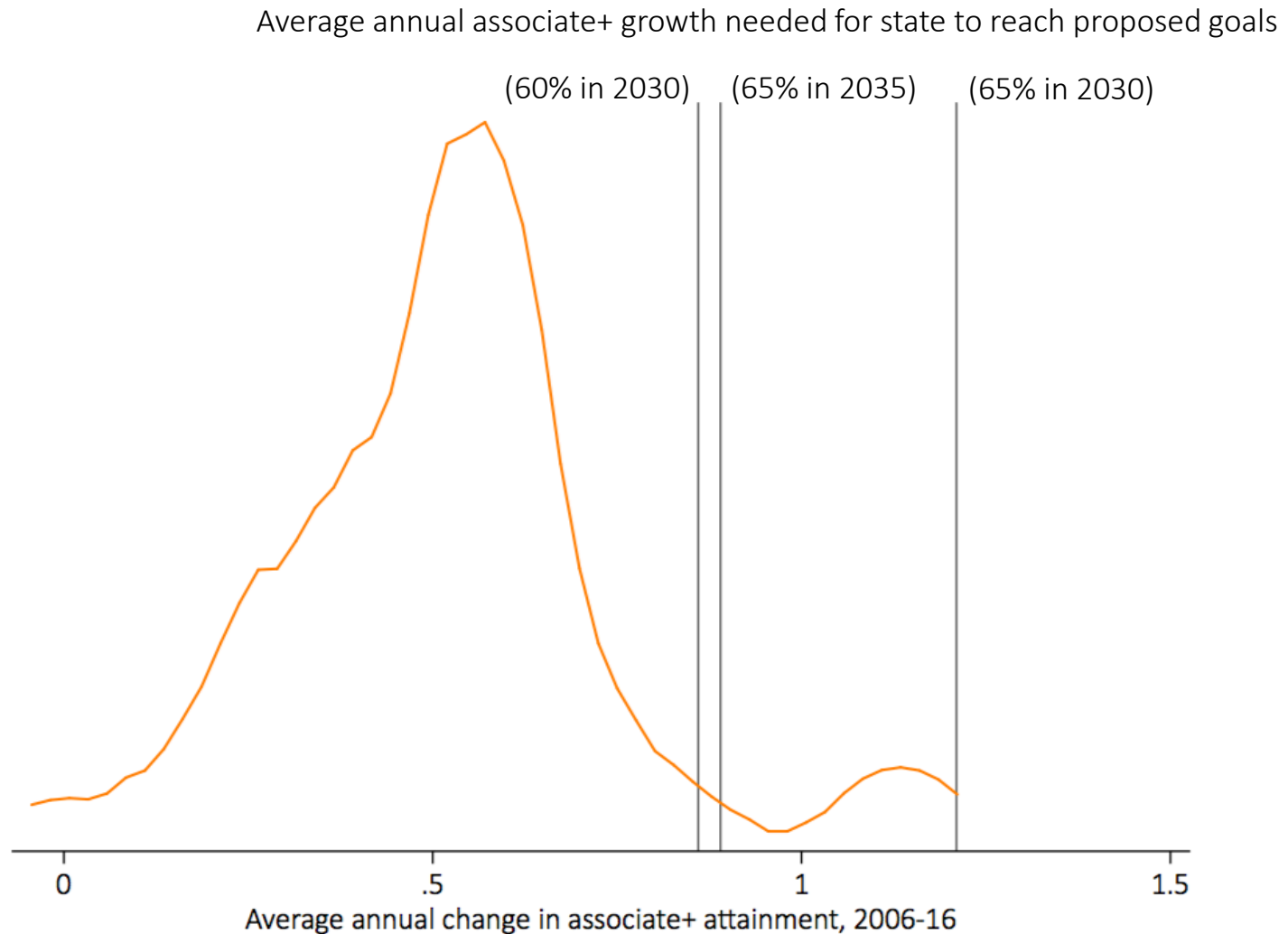


What's feasible?

Percentage point change in attainment (associate+) by state, 2006-2016, ages 35-64

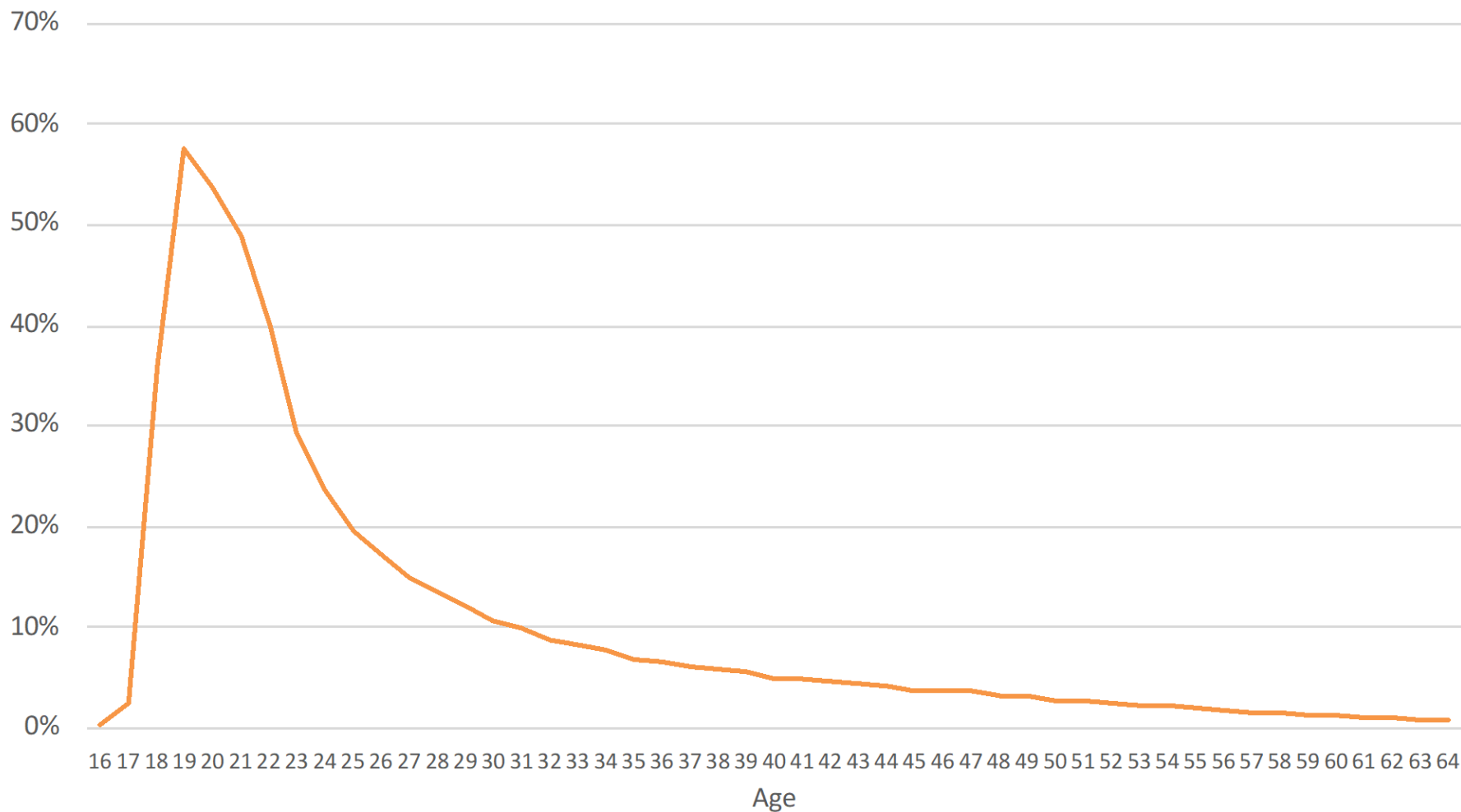


Distribution of states' average annual percentage point growth in attainment (associate+, ages 25-34), 2006-2016

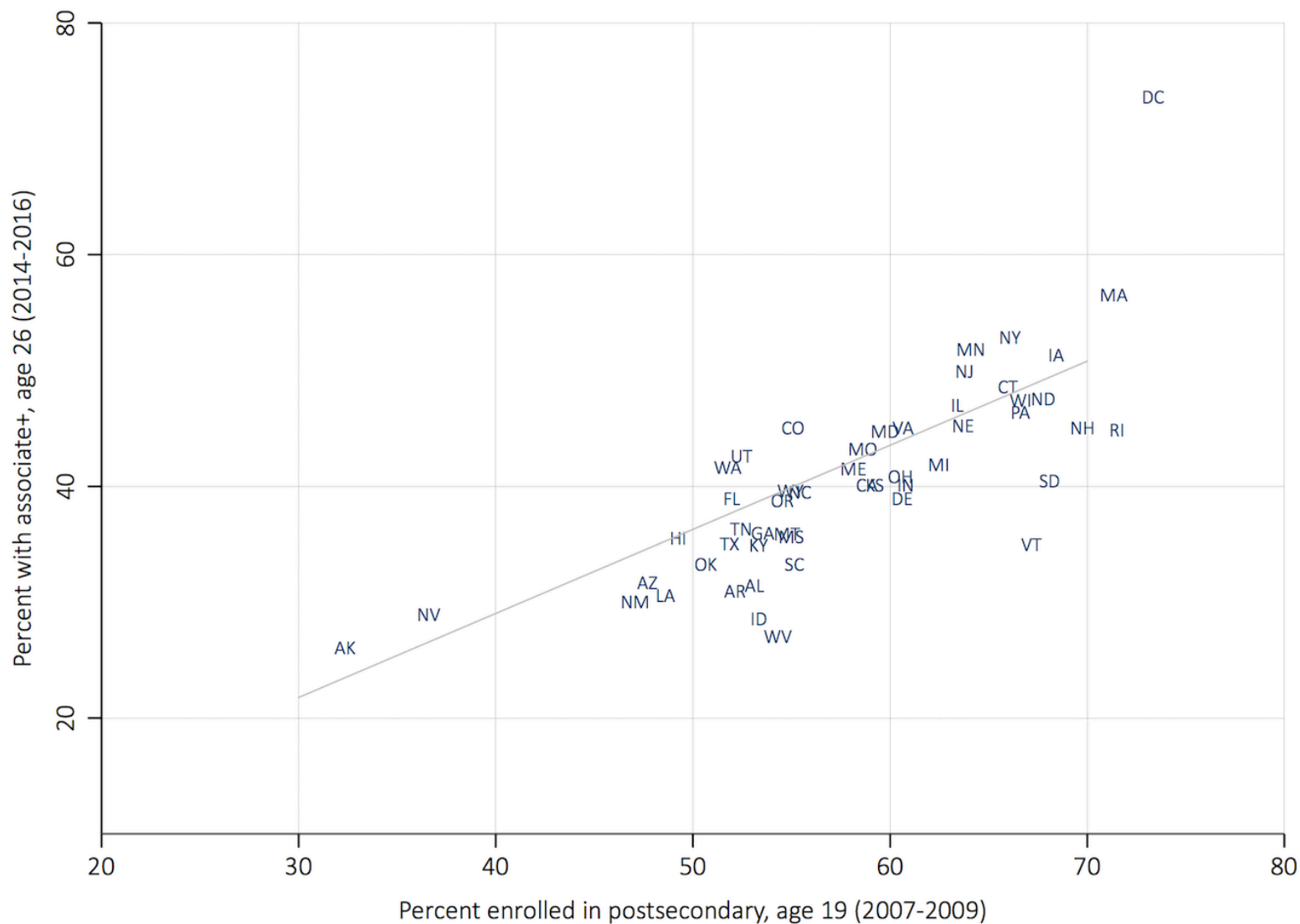


Filling the pipeline

Postsecondary enrollment by age, U.S., 2016



Age 19 enrollment versus age 26 attainment for the cohorts born in 1988-90 (averaged), by state



The Education Pathway

Where students in the public high school class of 2006* went by age 25

</>



*Sophomores in 2003-04

Gender *

All

Ethnicity *

All

Income Level *

All

School District

All

High School

All

41,655
sophomores

74% graduated from high-school in Oregon

68% started post-secondary education

27% received postsecondary credential by age 25



4-year degree

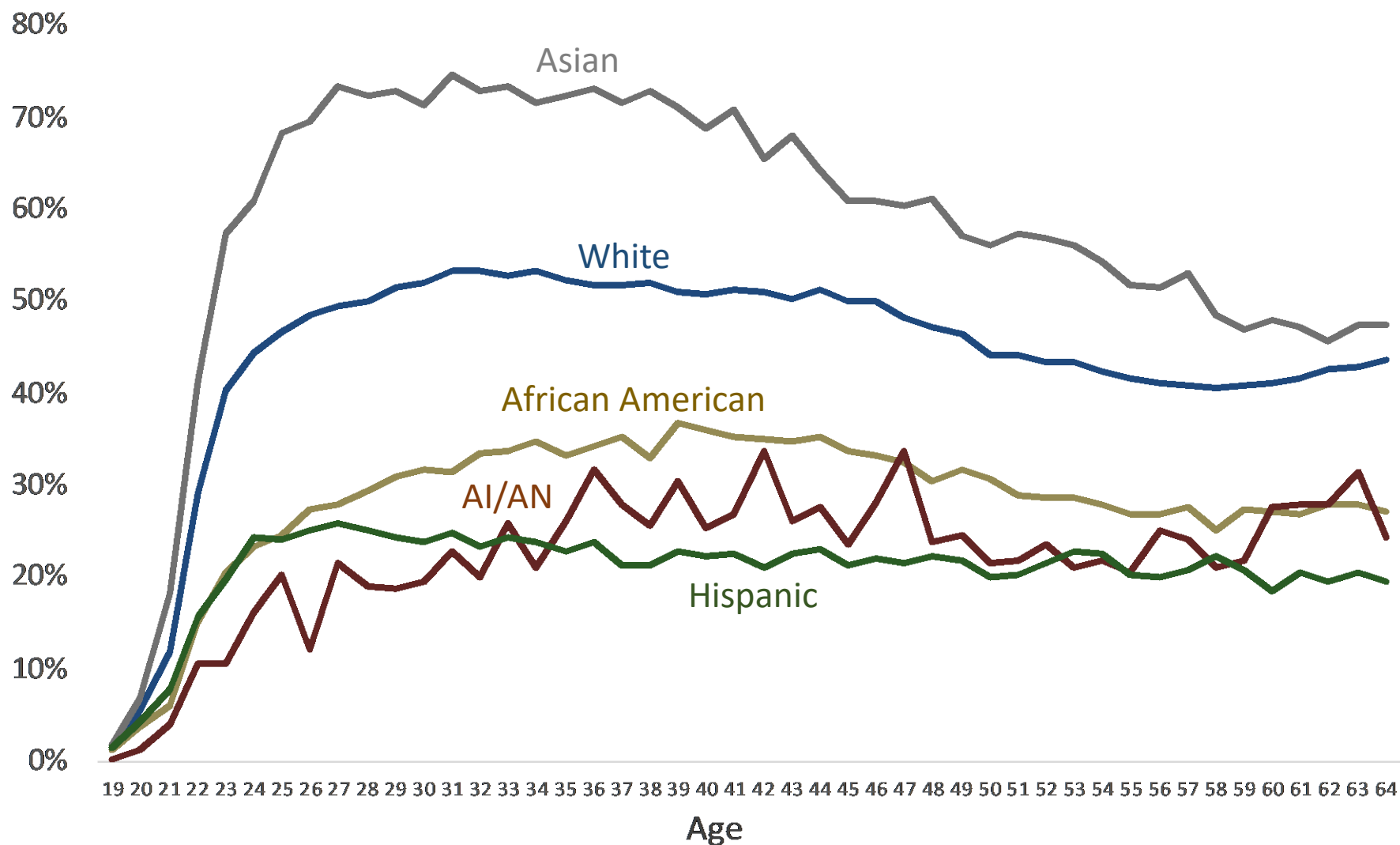
high school diploma

2-year degree

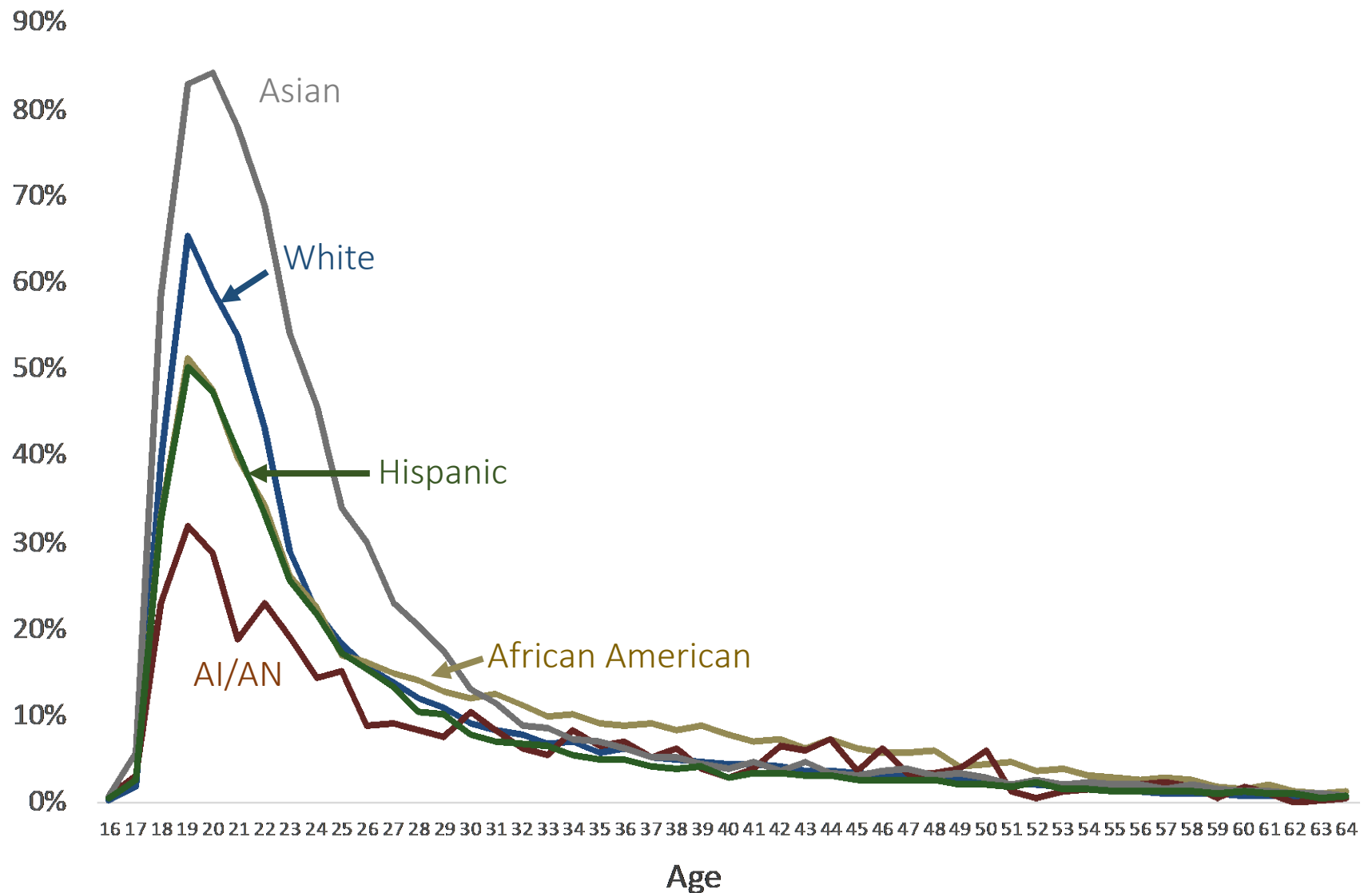
no known credential

Equity goals

Postsecondary attainment (AA+) by age and race/ethnicity, U.S., 2016



Postsecondary enrollment by age and race/ethnicity, U.S., 2016



The Education Pathway

Where students in the public high school class of 2006* went by age 25

</>



*Sophomores in 2003-04

Gender *

All

Ethnicity *

All

Income Level *

All

School District

All

High School

All

41,655
sophomores

74% graduated from high-
school in Oregon

68% started post-secondary
education

27% received
postsecondary
credential by age 25



4-year degree

high school diploma

2-year degree

no known credential

The Education Pathway

Where students in the public high school class of 2006* went by age 25

</>



*Sophomores in 2003-04

Gender *

All

Ethnicity *

All

Income Level *

Non-Low Income

School District

All

High School

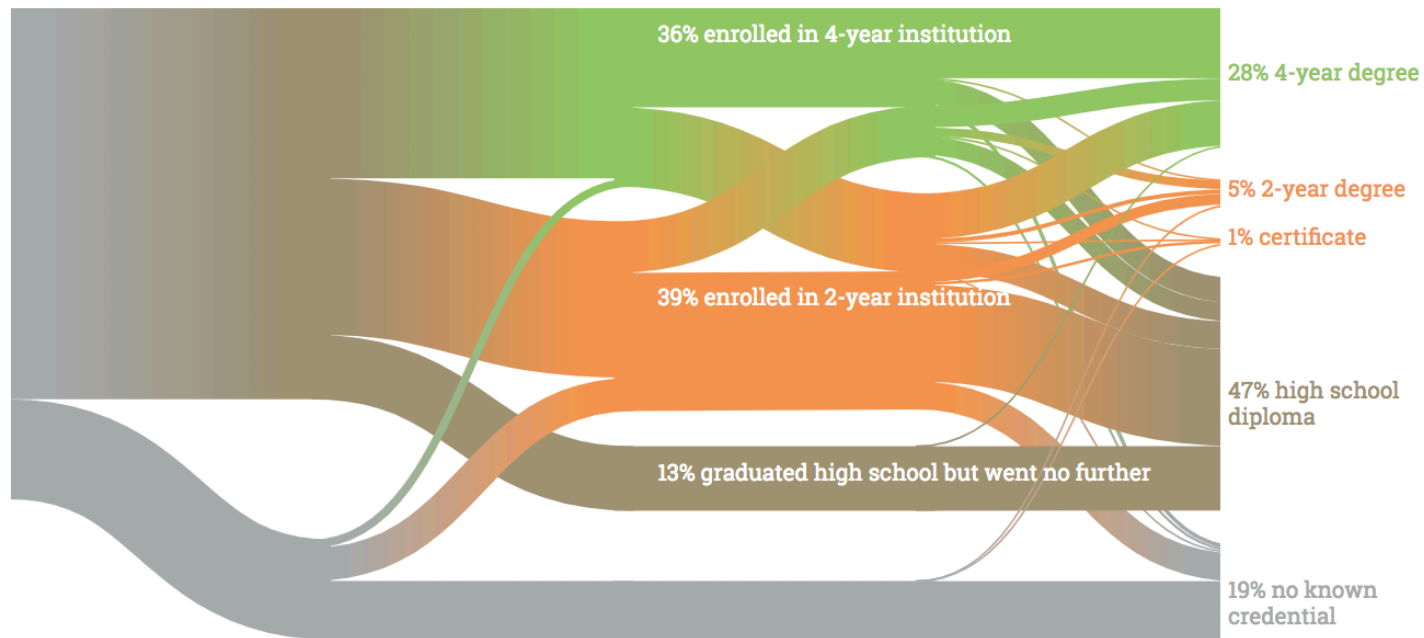
All

28,440
sophomores

80% graduated from high-school in Oregon

75% started post-secondary education

34% received postsecondary credential by age 25



The Education Pathway

Where students in the public high school class of 2006* went by age 25

</>



*Sophomores in 2003-04

Gender *

All

Ethnicity *

All

Income Level *

Low Income

School District

All

High School

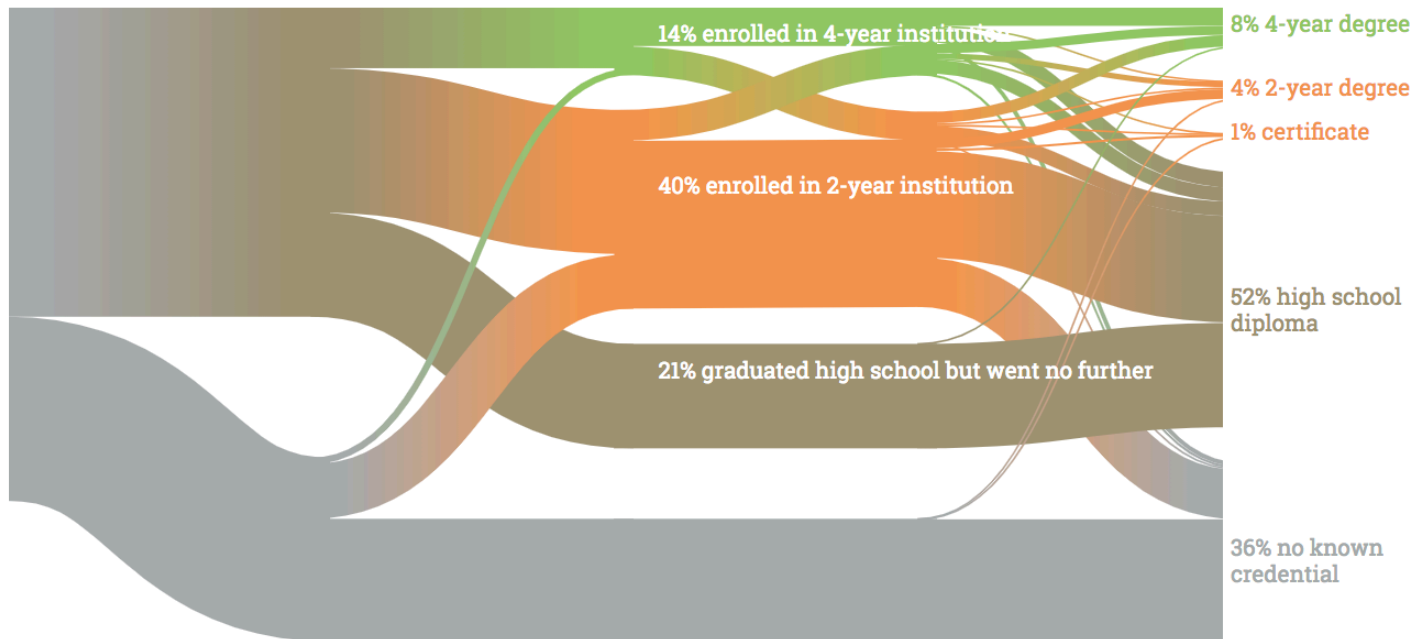
All

13,104
sophomores

63% graduated from high-
school in Oregon

54% started post-secondary
education

12% received
postsecondary
credential by age 25



4-year degree

2-year degree

high school diploma

no known credential

The Education Pathway

Where students in the public high school class of 2006* went by age 25

</> 

*Sophomores in 2003-04

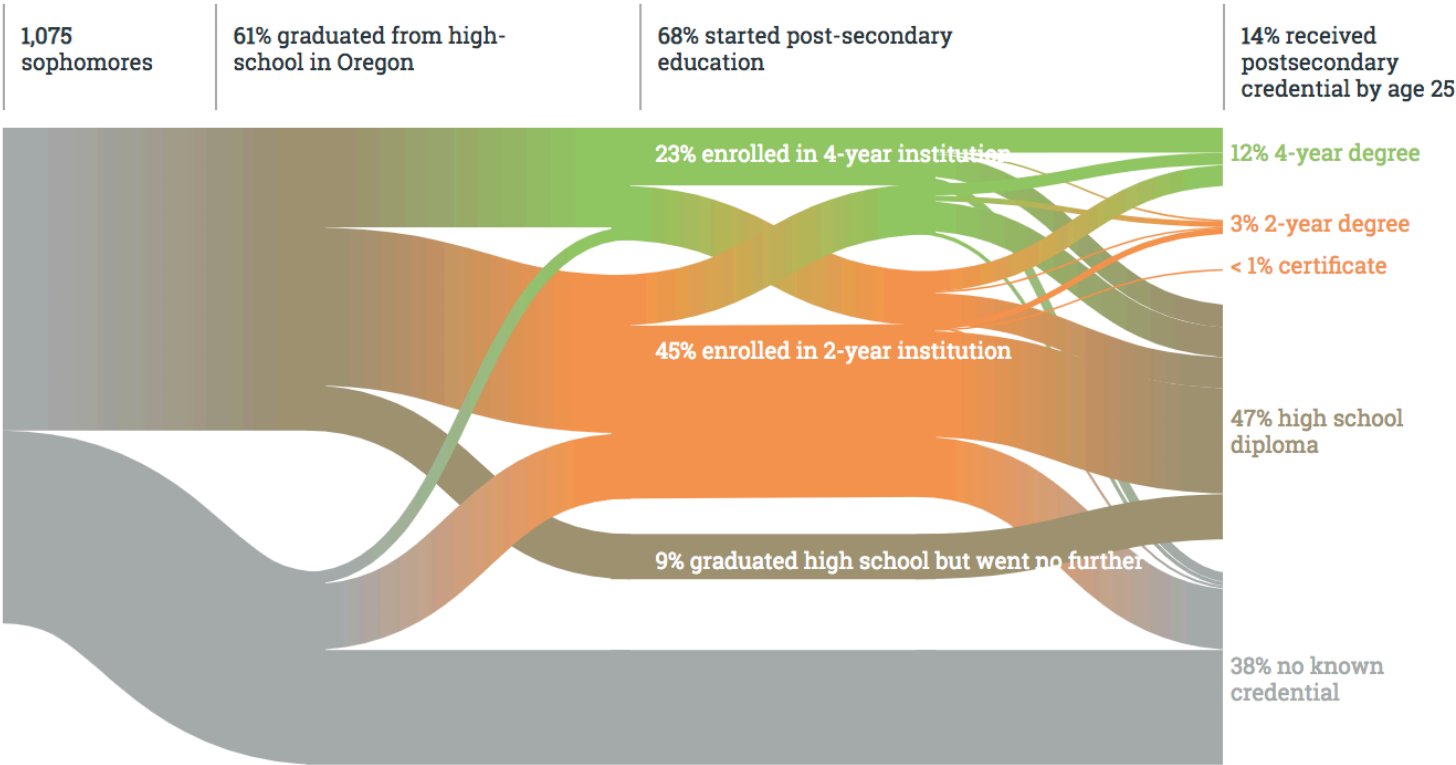
Gender *
All

Ethnicity *
African American

Income Level *
All

School District
All

High School
All



- 4-year degree

high school diploma
- 2-year degree

no known credential

The Education Pathway

Where students in the public high school class of 2006* went by age 25

</>



*Sophomores in 2003-04

Gender *

All

Ethnicity *

Latino

Income Level *

All

School District

All

High School

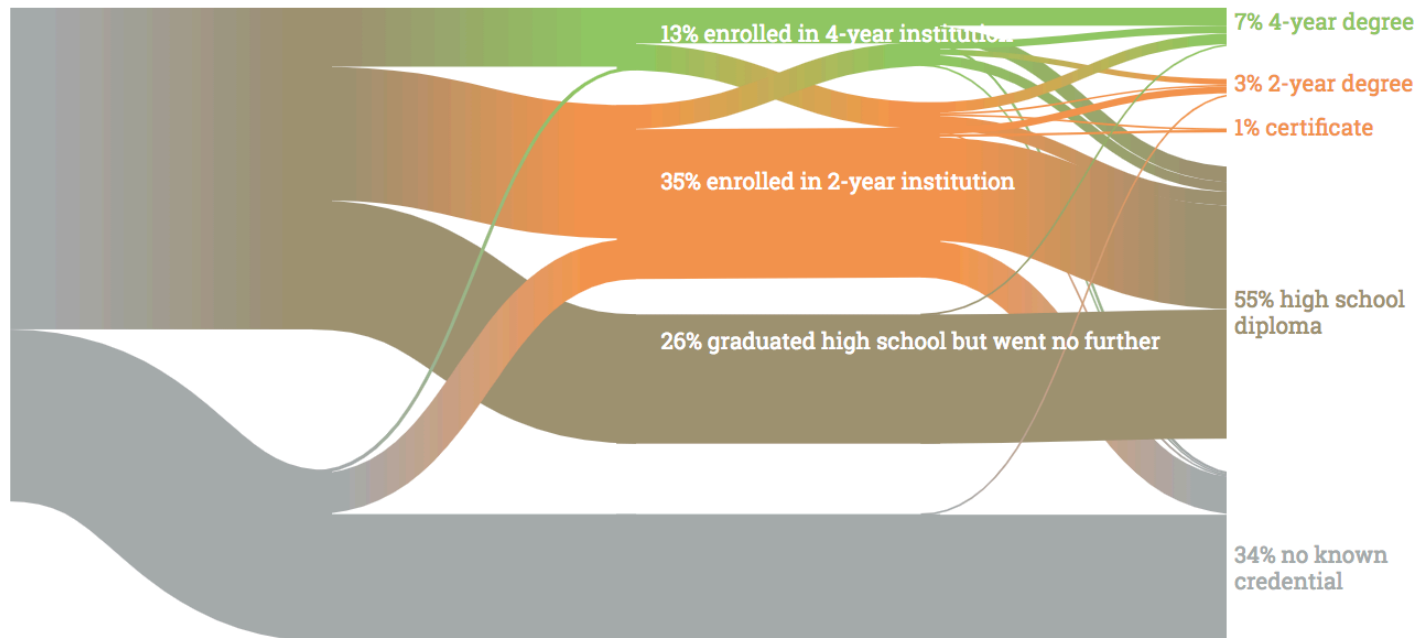
All

4,197
sophomores

65% graduated from high-
school in Oregon

48% started post-secondary
education

11% received
postsecondary
credential by age 25



4-year degree

2-year degree

high school diploma

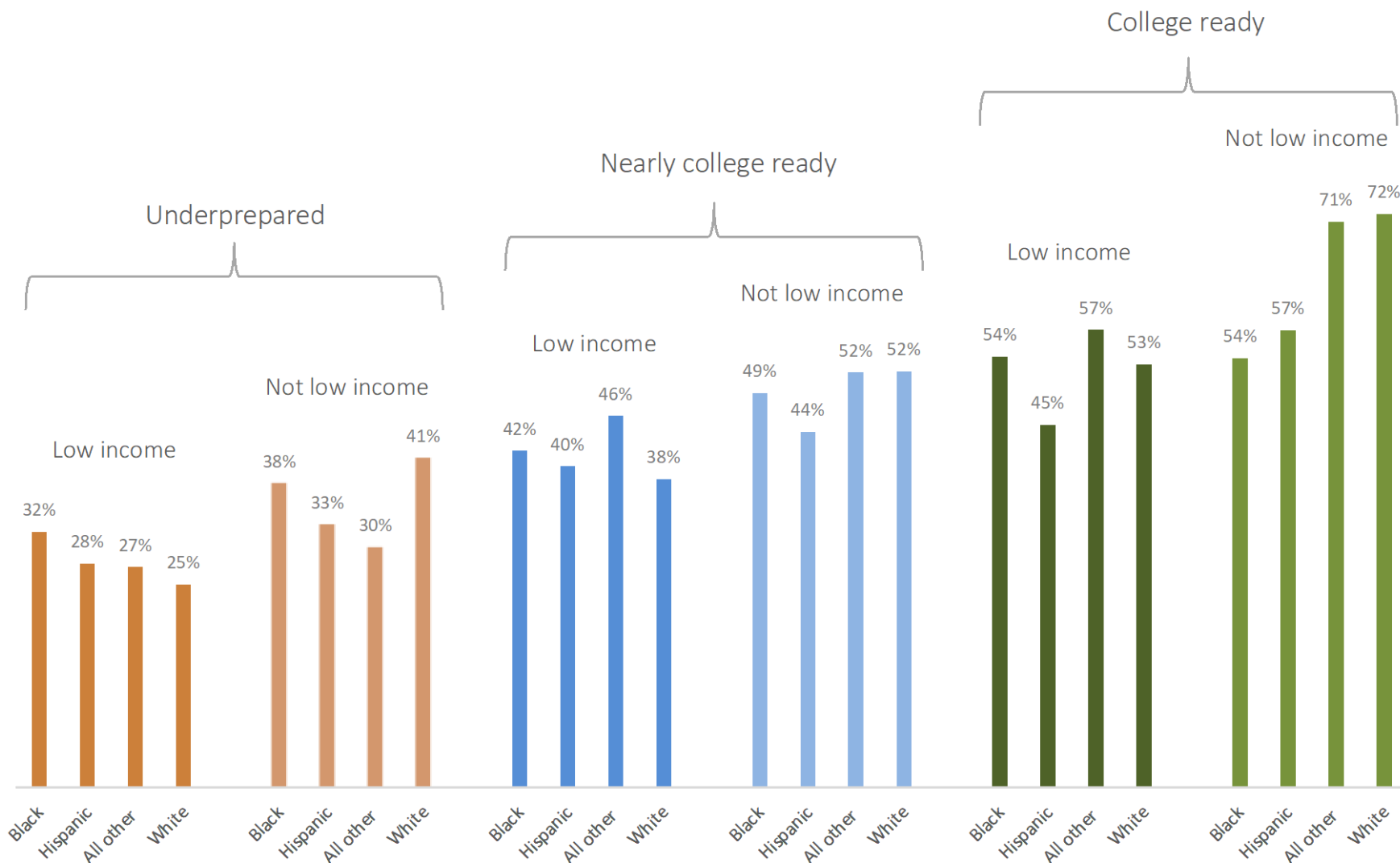
no known credential

Filling the pipeline:
equity considerations

Credential attainment rates by college readiness and income level

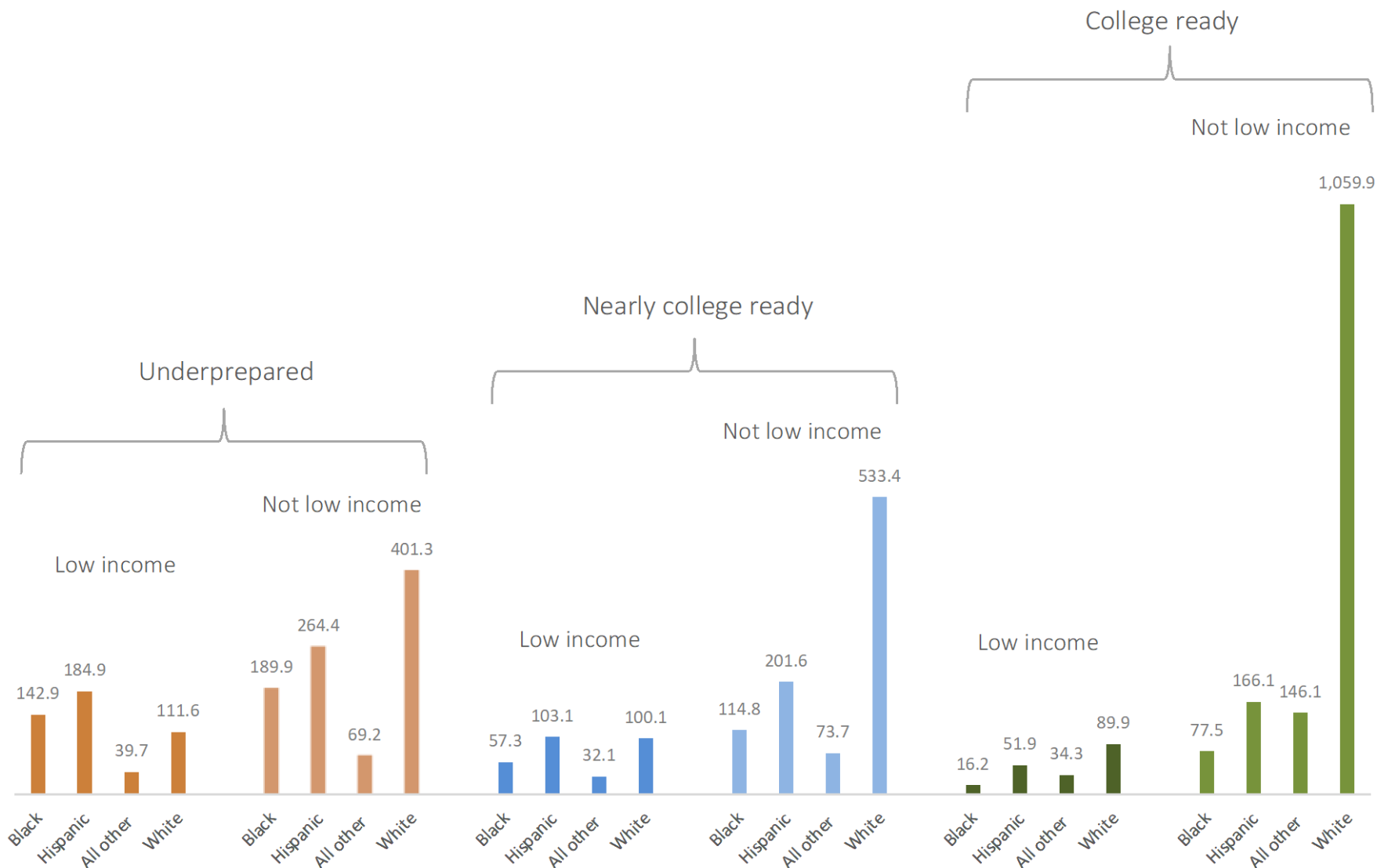
	Low income	Not low income
College-ready	52%	69%
Nearly college-ready	41%	50%
Under-prepared	28%	38%

Credential attainment rates by family income, race/ethnicity, and college readiness



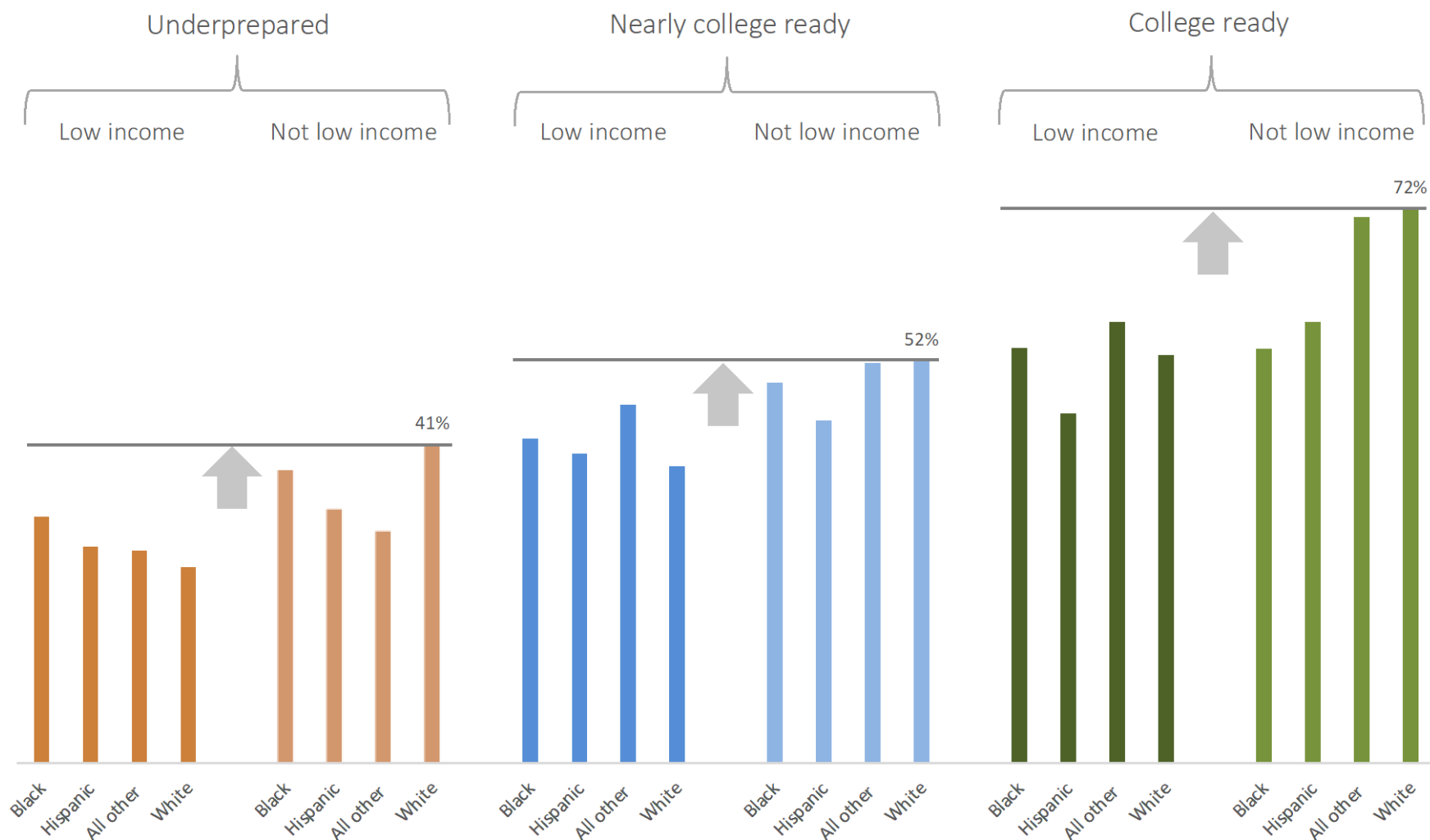
Source: ECONorthwest analysis of ELS:2002 extract provided by CEW, outcomes as of 2012 (age 26)

19-year-old cohort (000s), by family income, race/ethnicity, and college readiness



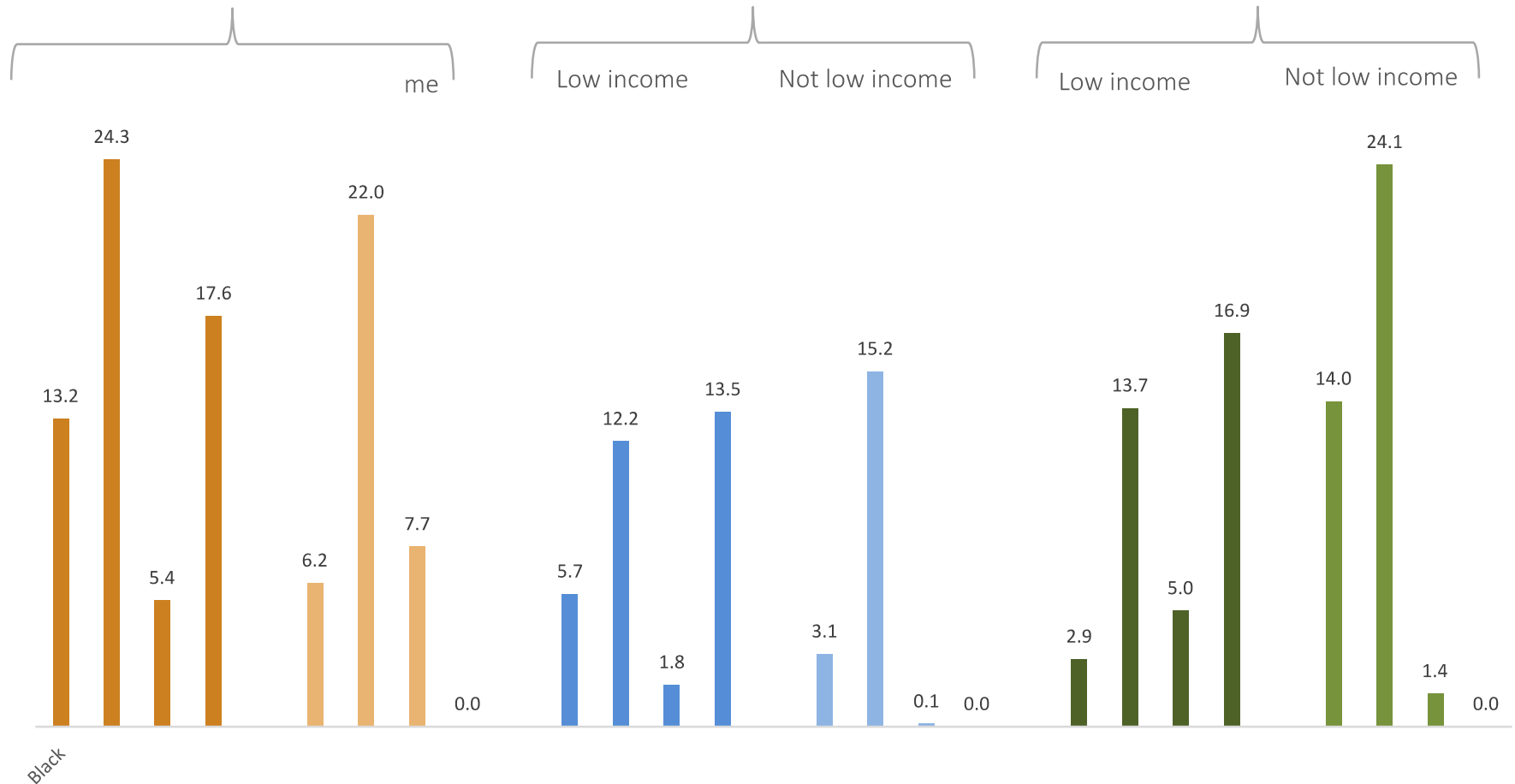
Source: ECONorthwest analysis of ELS:2002 extract provided by CEW, outcomes as of 2012 (age 26); Census population baseline (2017)

Measuring the gap: Counting the number of additional credentials required to increase attainment rates within each college-readiness category to non-low-income-white rates

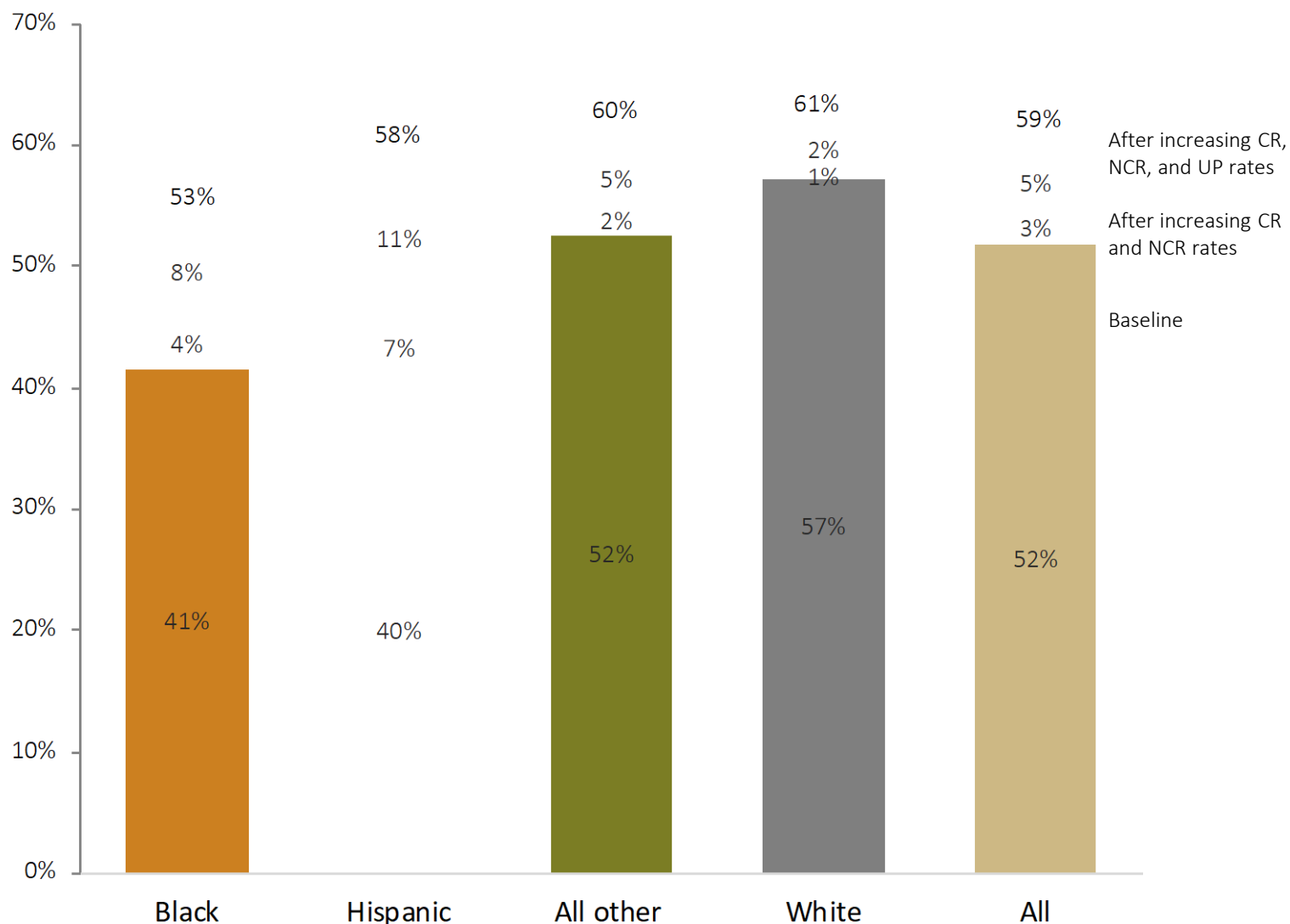


Source: ECONorthwest analysis of ELS:2002 extract provided by CEW, outcomes as of 2012 (age 26)

Additional credential holders (000s) if attainment rates increased to non-low-income-white attainment rates within college readiness categories



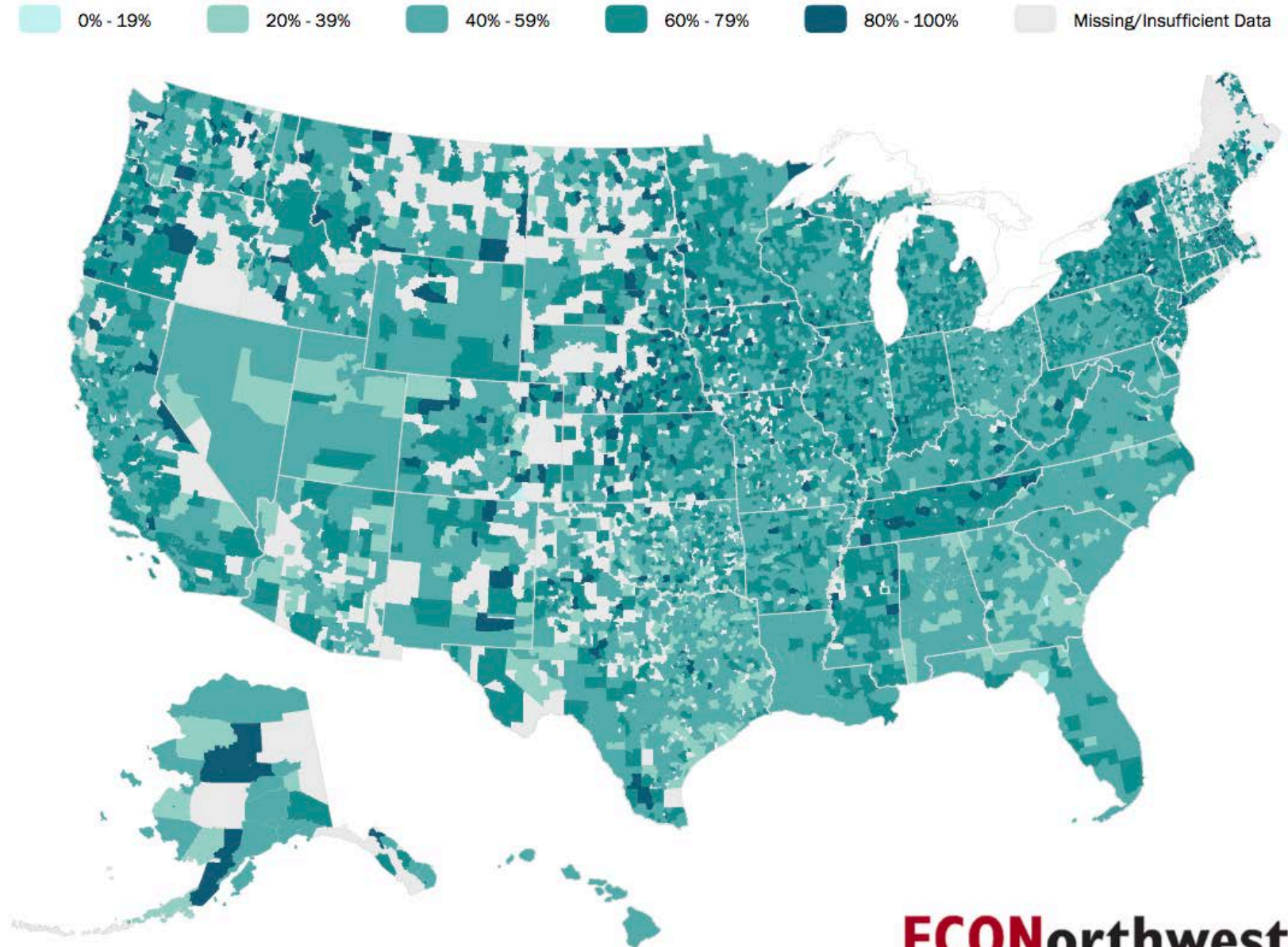
Cohort credential attainment rates if attainment rates increased to non-low-income-white attainment rates within college readiness categories



Source: ECONorthwest analysis of ELS:2002 extract provided by CEW, outcomes as of 2012 (age 26); Census population baseline (2017)

Local targets

Share of 12th grade students expected to graduate on time who completed the FAFSA by June 30, 2017



Source: U.S. Department of Education, Federal Student Aid, Application Volume Reports, 2017/2016 District Estimates

Educational attainment and access to postsecondary institutions

Postsecondary enrollment and attainment

National level

State level

State-level map

State

Colorado

Map shows educational attainment rates for selected population.

Postsecondary enrollment

- ☐ Enrolled
- ☐ Not enrolled

Highest educational attainment

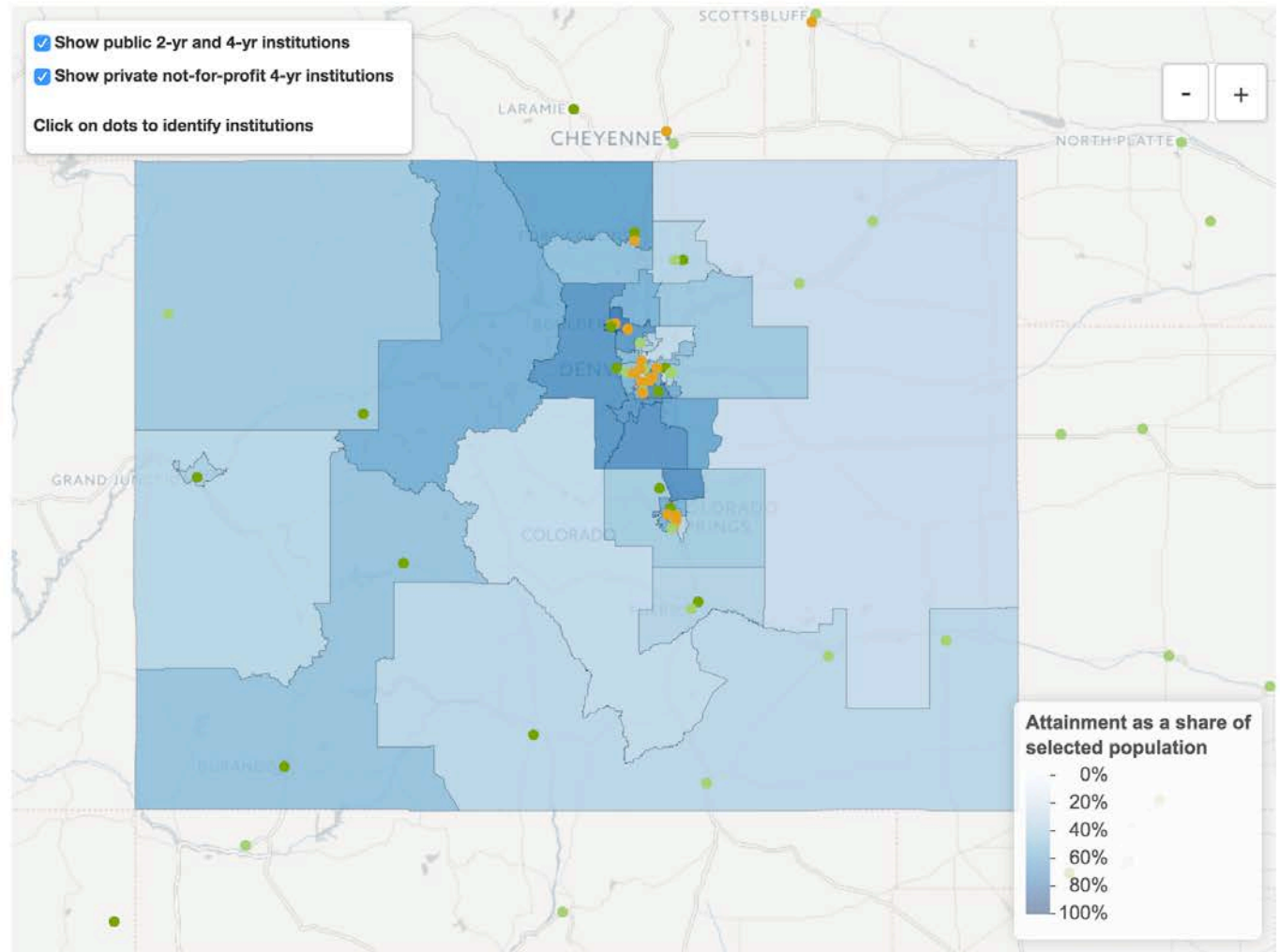
- ☐ Less than high school
- ☐ High school or GED diploma
- ☐ Some college
- ☒ Associate
- ☒ Bachelor's
- ☒ Graduate

Selected population

Age group

- ☐ 18-24
- ☒ 25-34
- ☒ 35-44
- ☒ 45-54
- ☒ 55-64

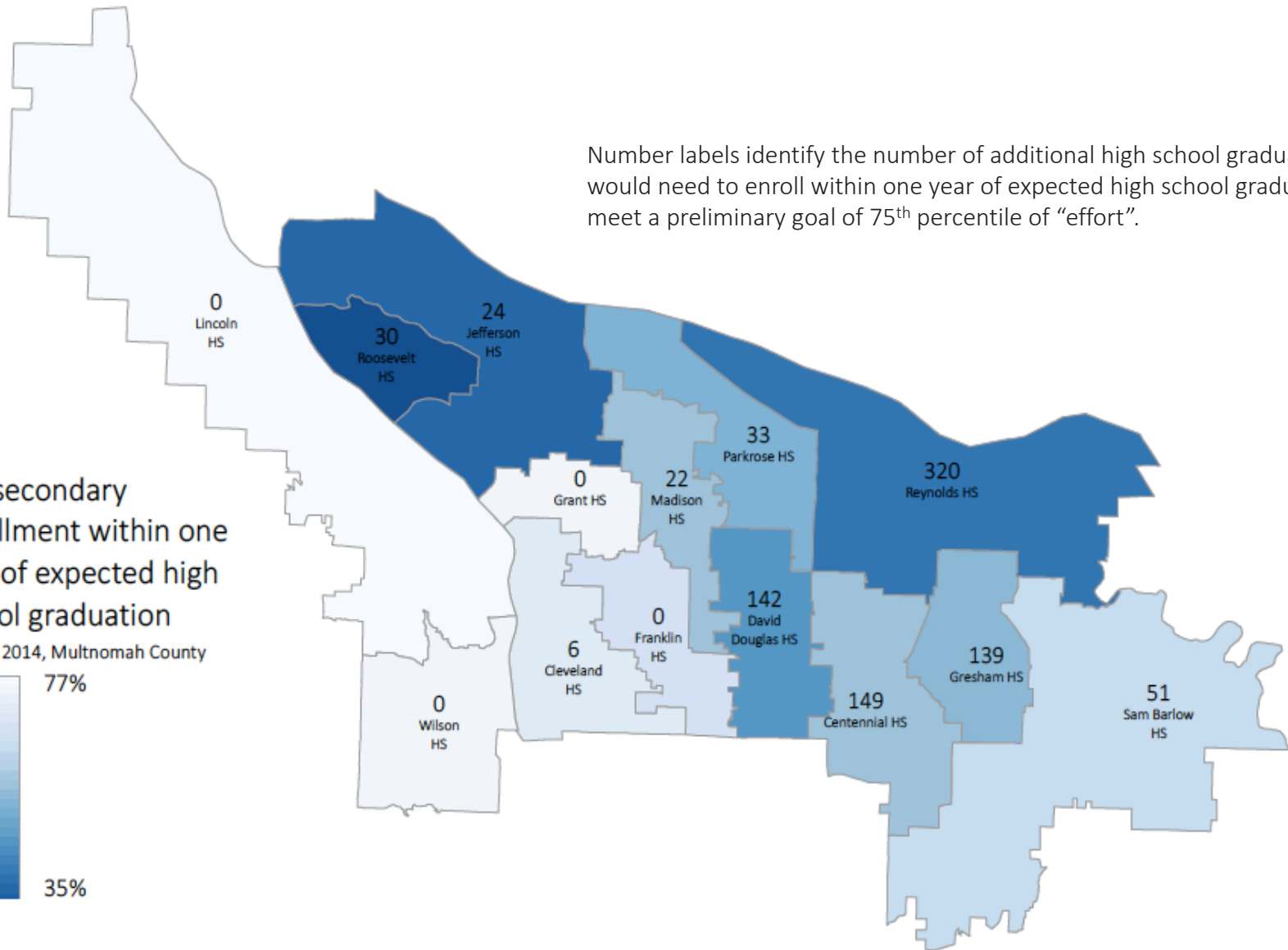
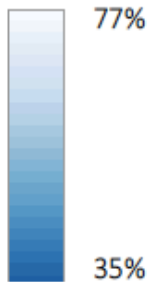
- ☒ Show public 2-yr and 4-yr institutions
 - ☒ Show private not-for-profit 4-yr institutions
- Click on dots to identify institutions



Number labels identify the number of additional high school graduates that would need to enroll within one year of expected high school graduation to meet a preliminary goal of 75th percentile of “effort”.

Postsecondary enrollment within one year of expected high school graduation

Class of 2014, Multnomah County



Example approaches to target setting

- Targets based on relationships between outcomes (e.g., enrollment→attainment)
- Absolute: 75th percentile relative to a comparison group (states, institutions, etc.)
- Closing existing gaps
- Relative: 75th percentile adjusted for income or other variables (predictive model)
- Targets based on modeled trajectories to the goal, using student- or institution-level data