

WICHE



Western Interstate Commission  
For Higher Education

# Sharing data across state lines

Sarah Leibrandt

December 3, 2019



*Boulder Flatirons*

WICHE



# The Western Interstate Commission for Higher Education

- WICHE: An interstate compact formed 65 years ago



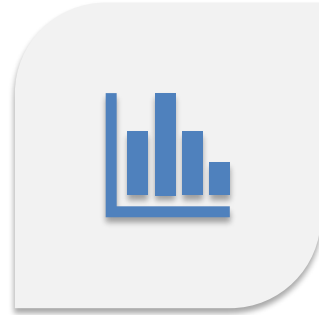
# WICHE's Role in the Region

- Promotes access and excellence in higher education for all citizens of the West through:
  - Regional collaboration
  - Resource sharing
  - Sound public policy
  - Innovation

# WICHE's Programmatic Units



PROGRAMS AND  
SERVICES



POLICY ANALYSIS  
AND RESEARCH



BEHAVIORAL  
HEALTH PROGRAM



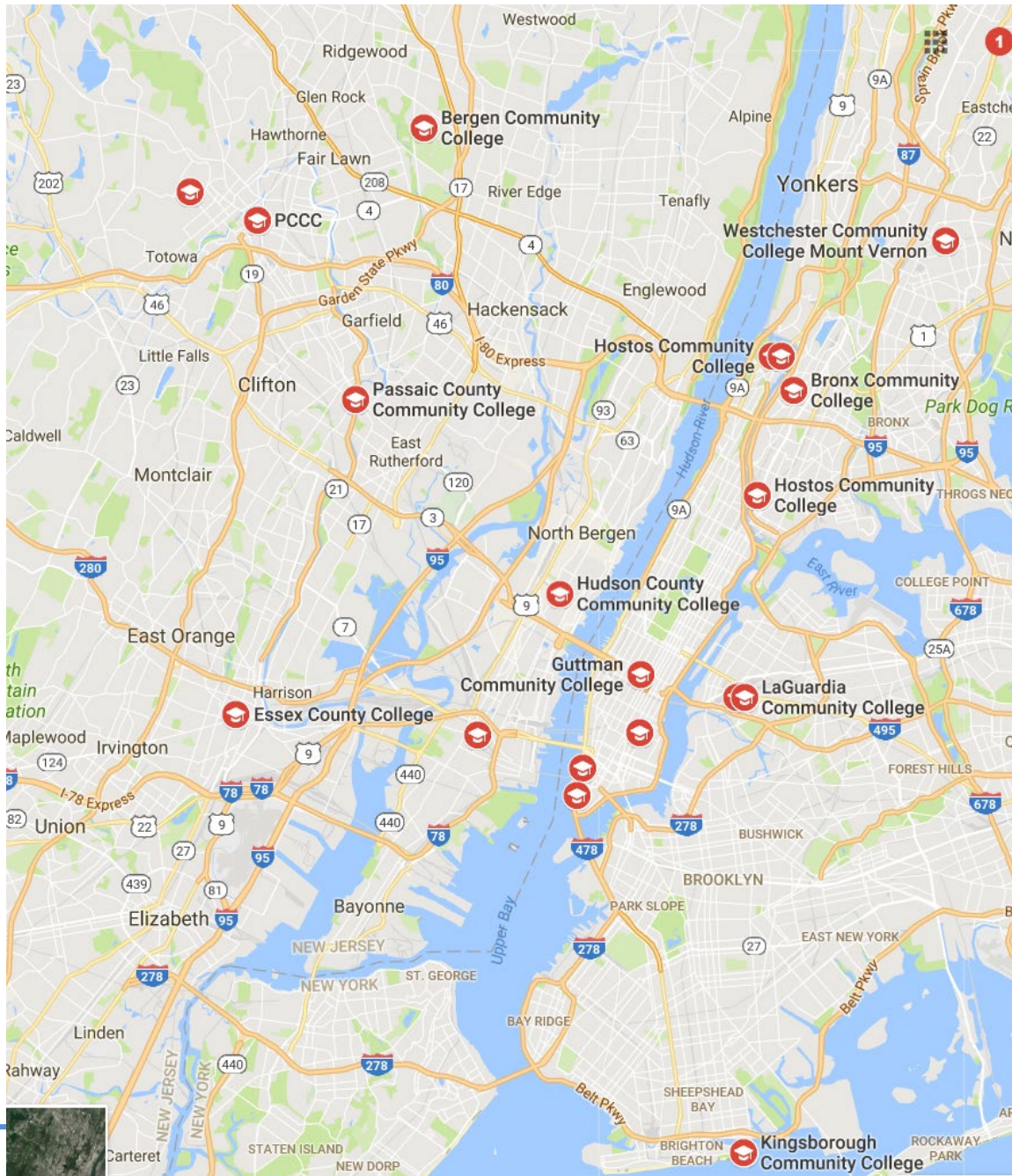
WCET – WICHE  
COOPERATIVE FOR  
EDUCATIONAL  
TECHNOLOGIES

# State Data Systems are becoming more robust

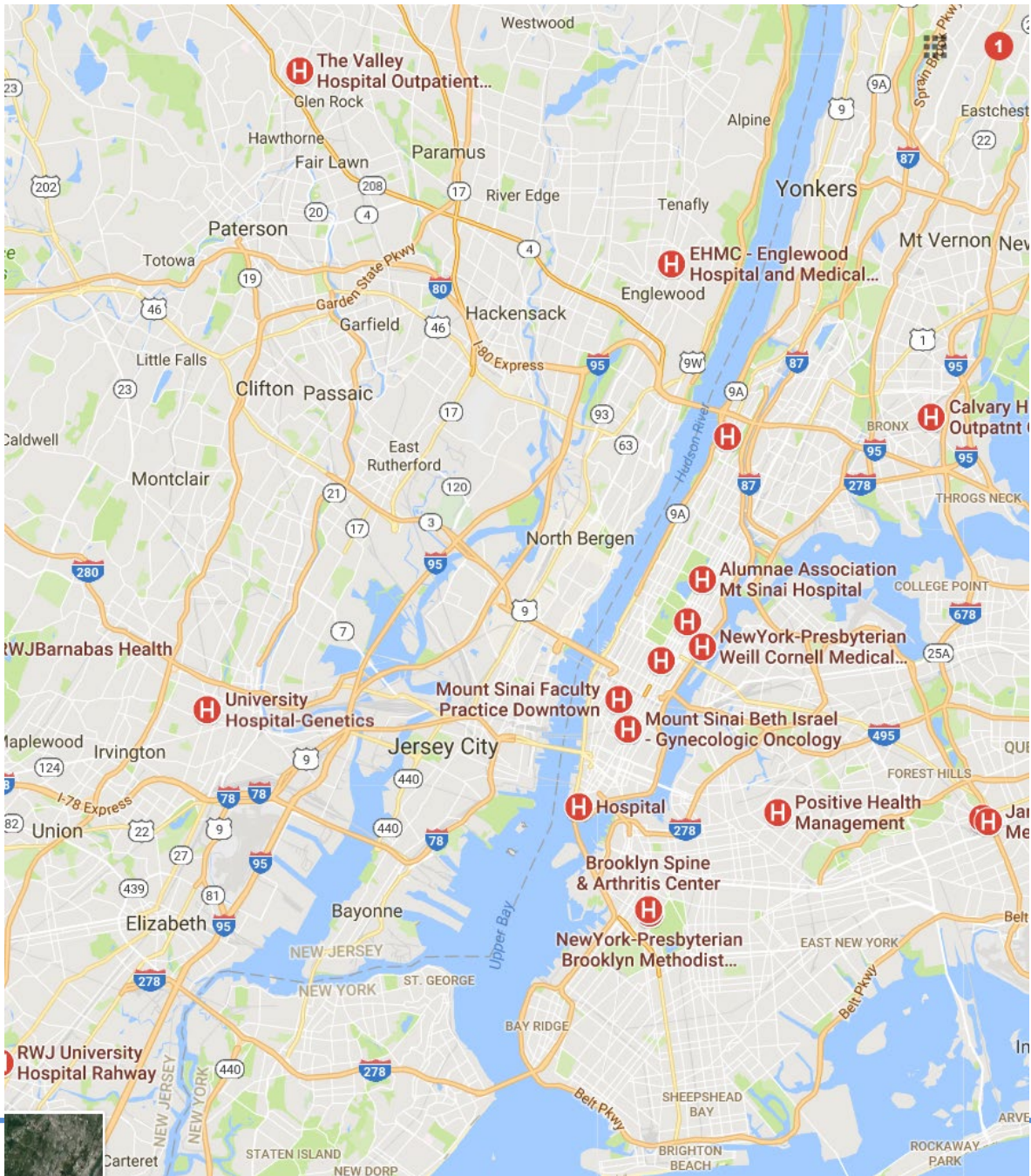
- The majority of states currently link or plan to link postsecondary to workforce data
- Data systems shed light on diversity and include elements that address equity gaps and student and workforce outcomes
- States are developing dashboards and other means of sharing data with stakeholders

# The problem

- State data systems tend to respect state borders
- But students, workers, and employers don't
- Consumer information, data for policy adjustment, and accountability measures can be based on incomplete data



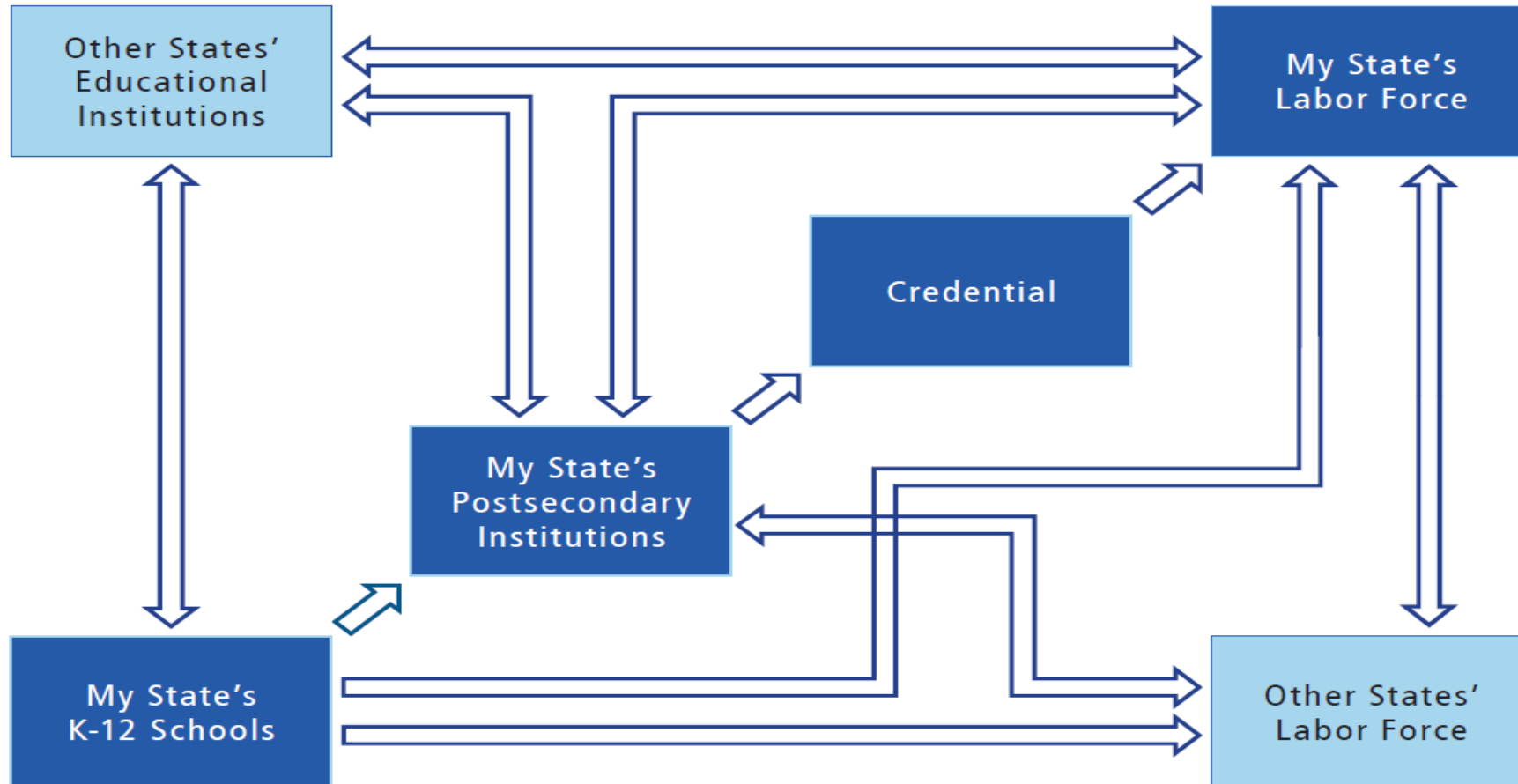
For example:  
there are community  
colleges near the  
NY and NJ border



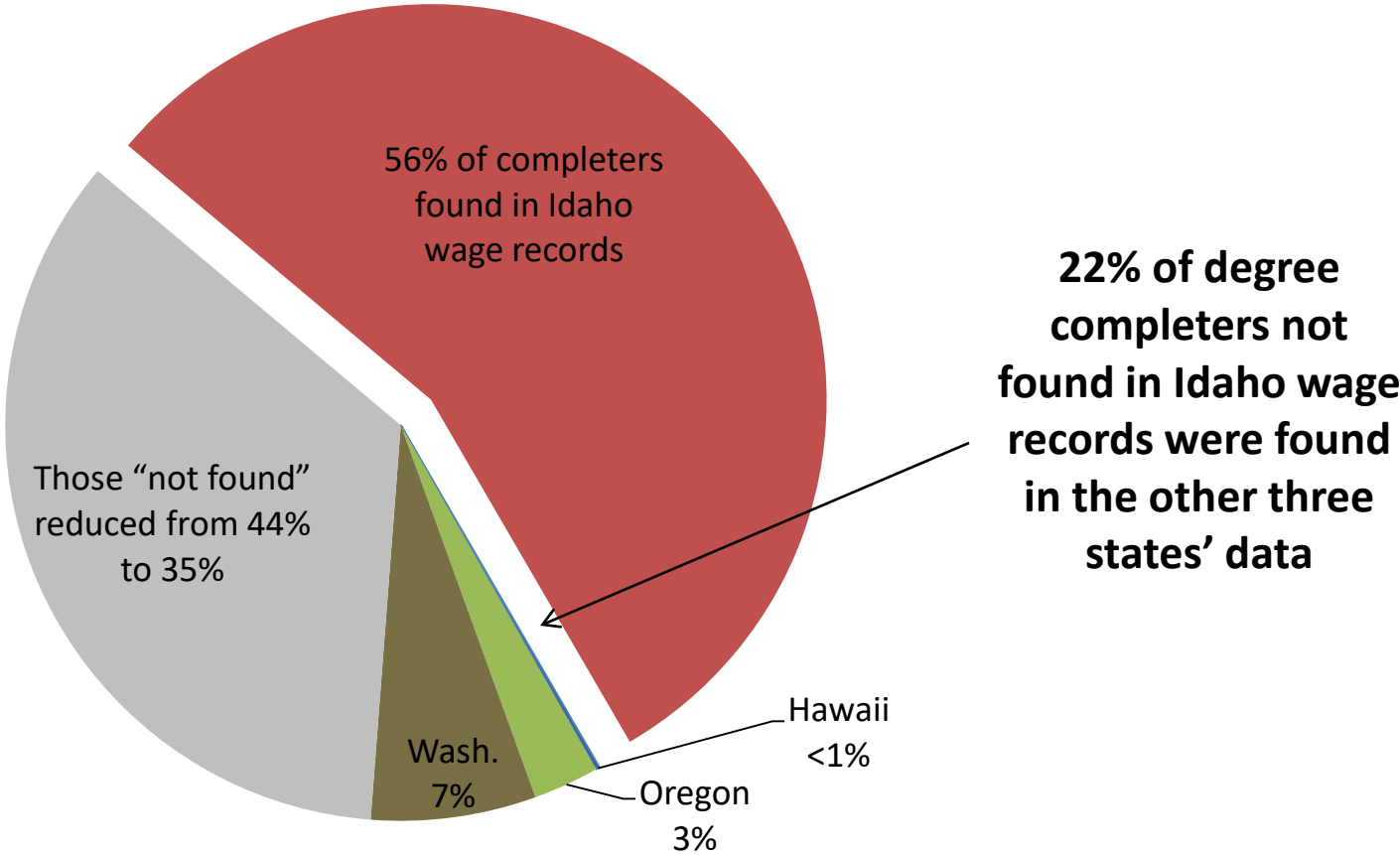
There are also many hospitals near the NY and NJ border



# One possible solution

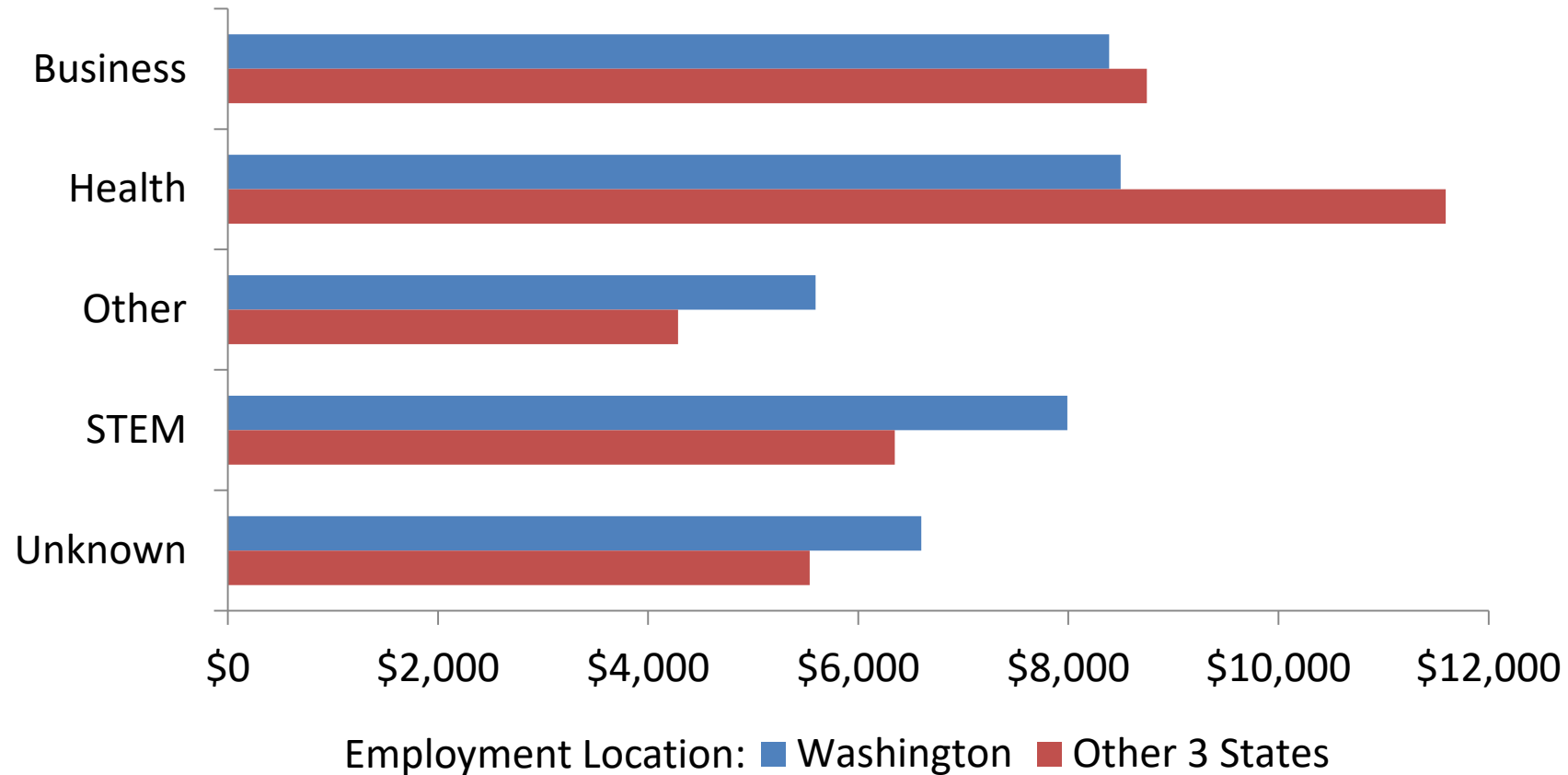


# Uncertainty About Employment Outcomes Reduced by 22% in Idaho



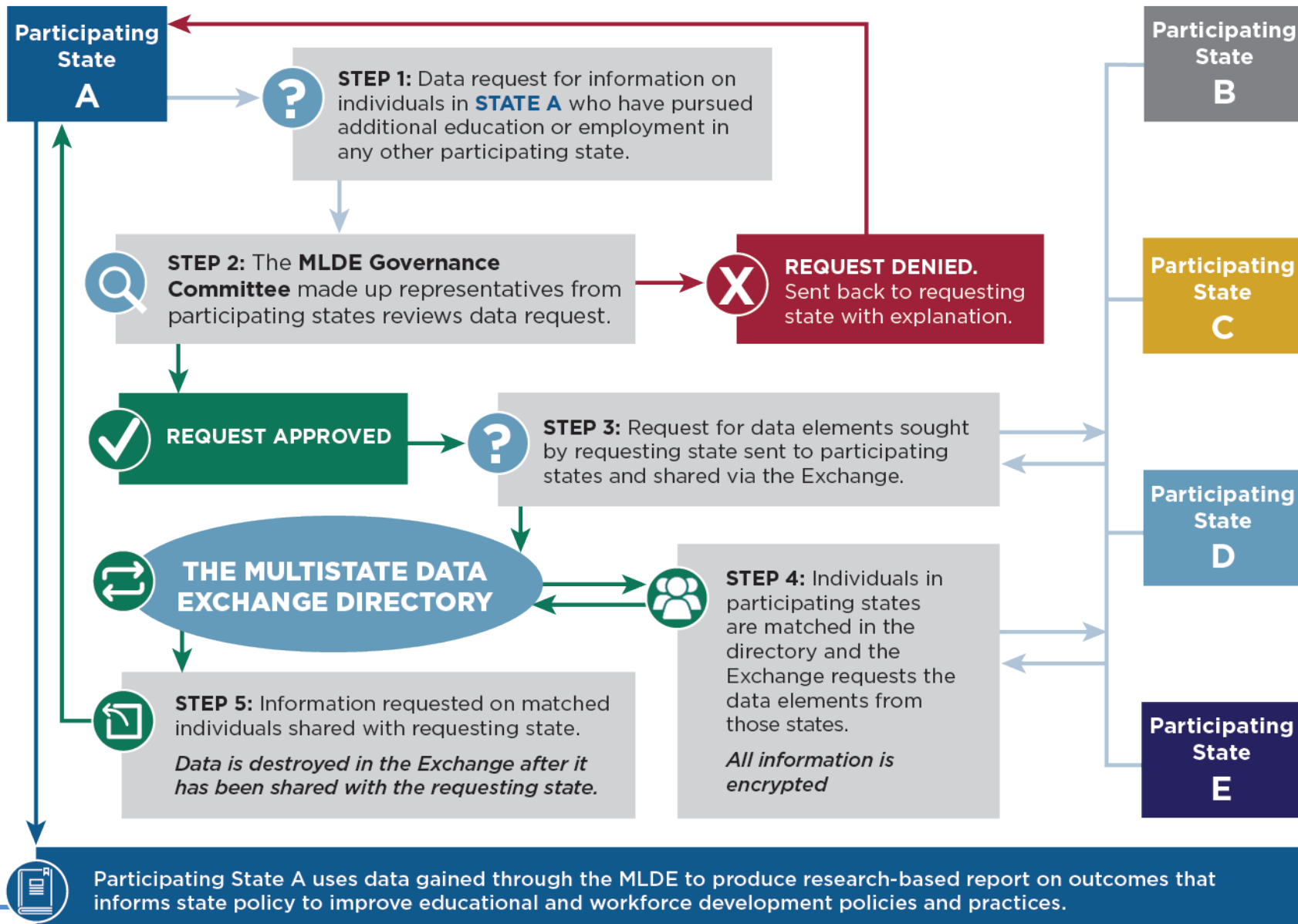
Notes: 3,158 students who received associate's or higher award from an institution in Idaho by Dec. 2010 and had a valid SSN

# Median Wages of Washington Bachelor's Degree Earners by CIP Field and Employment Location



Note: These data only apply to students captured in the original cohort definitions and who completed an associate's degree or higher by Dec. 2010 and who were not simultaneously enrolled. Employment was measured 10-12 months after receipt of award.

# HOW STATES EXCHANGE DATA USING THE MLDE



# 2019 Exchange

State	# of Records Contributed	% of records found in other states			
		Hawaii	Idaho	Minnesota	North Dakota
North Dakota	329,289	0.11%	0.31%	10.77%	--
Hawaii	341,798	--	0.28%	0.50%	0.11%
Idaho	537,399	0.16%	--	0.35%	0.20%
Minnesota	3,131,930	0.04%	0.05%	--	1.20%

# Sustainability and Next Steps

- Completing four-state exchange
- Potential for bilateral exchanges
- MLDE does not appear sustainable in current form (but state-to-state exchanges are in high demand)
- WICHE remains committed to helping meet states' needs
- Multiple pathways to improved state data

## Key principles/takeaways

- Mobility necessitates the need for an intermediary organization
- Partnerships matter for expertise, credibility, support, sustainability
- Data governance, face-to-face meetings, relationships are key
- Successful solutions must make life easier for states, not add burden

# Contact

Sarah Leibrandt, Ph.D., [sleibrandt@wiche.edu](mailto:sleibrandt@wiche.edu)