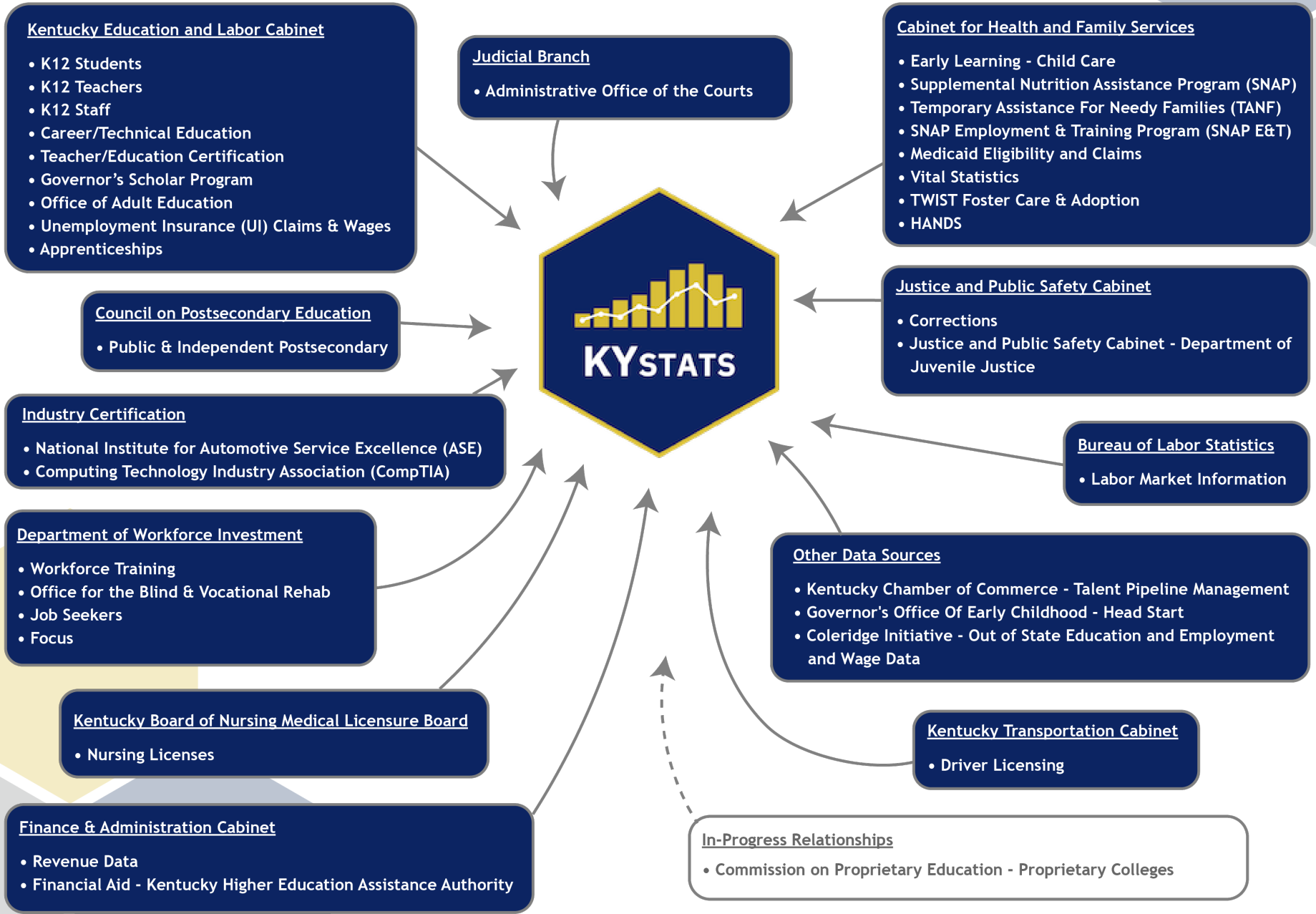


Kentucky Center for Statistics



Uniting our data.
Informing our Commonwealth.



KLDS TODAY

- 6,000 Active Data Elements
- 172 Unique File Types
- Data from 27 Agencies
- 47 Data Sources

EXPANDING THE VALUE OF KYSTATS

....so policymakers, practitioners, and the general public can make **better informed decisions.**

2023-25 Research Agenda Themes



Access, Usage
& Usability

Applying an
Equity Lens

Understanding
the Impact of
Significant
Events

Expanded
Modeling
& Prediction



Birth → **Education** → **Workforce**

Visualization & Storytelling



HIGH SCHOOL FEEDBACK REPORT

This dashboard is powered by the Kentucky Center for Statistics. Those using screen readers may need to click the enter key to select options in filters. This dashboard is best viewed on a desktop computer. If you have any questions, please contact kystats@ky.gov. Follow us @KYSTATS on social media.

An alternative, accessible format in Excel is available for download here: https://bit.ly/HSFR_Excel

Select a Dashboard to View

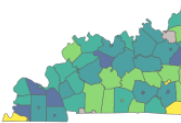
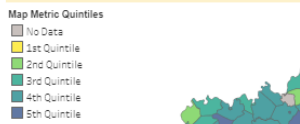
College-Going and Success

Select an Academic Year to Filter the State-Level Metrics and Trends

State Level College-Going or College Success

ACT COMPOSITE	HIGH SCHOOL GPA
18.9	2.81
MEAN KEES MONEY EARNED	COLLEGE CREDIT WHILE IN HIGH SCHOOL
\$1,030	29.9%

Select to Change the Metric on the Maps and Trend Grid



Select a Geography Level to Compare Col

Select a Geography Level

College-Going and College Success Metrics by Demograp

	2011	2012
All Students	19	19
Female	19	19
Male	19	19
Black, Non-Hispanic	16	16
White, Non-Hispanic	19	20
Hispanic or Latino, regardless of race	18	18
Other	19	19
Special Education	14	15
Free/Reduced Lunch	17	17
Paid Lunch	20	21
Homeless	17	17

Foster
SNAP
KTAP

This grid shows the ACT Composite Score for the selected data with darker colors indicating higher scores. *Redacted' indicates that data is not available for Foster, SNAP, and KTAP groups indicate years these demographic groups were present in the data.



Multi-State Postsecondary Report

COLERIDGE INITIATIVE Employment by Institution

This dashboard is powered by the Kentucky Center for Statistics. Those using screen readers may need to click the enter key to select options in filters. This dashboard is best viewed on a desktop computer. If you have any questions, please contact kystats@ky.gov. Follow us @KYSTATS on social media.

Filter Report by State

This dashboard includes three sections: Employment Outcomes by Major Group and Years Post Completion, Wage Information can be filtered by percentile Completers across the 2007 through 2017 academic years (AY) followed to Qualifying Employment Outcomes are workers with at least 2 quarters of data table represents reduced values, blank data represents no data available

Employment Outcomes by Major Group

Major Group	Completer Count	In-State Median Wage	Out-of-State* Median Wage
All	309,720	\$40,601	\$43,744
Arts and Humanities	50,251	\$29,522	\$31,837
Business	53,200	\$42,097	\$48,806
Education	38,290	\$48,704	\$42,228
Health	66,226	\$44,068	\$50,885
Social and Behavioral Sciences	45,003	\$35,215	\$38,460
STEM	34,603	\$45,628	\$51,778
Trades	22,147	\$36,035	\$39,598

Employment Outcomes by Credential

Credential	Completer Count	In-State Median Wage	Out-of-State* Median Wage
All	309,720	\$40,601	\$43,744
Certificate	30,471	\$23,497	\$25,306
Diploma	5,133	\$32,619	\$34,434
Associate	53,350	\$36,646	\$39,135
Bachelor	143,920	\$38,039	\$41,247
Master	62,155	\$52,491	\$54,599
Doctoral	14,691	\$70,197	\$66,561

Employment Outcomes by Student Origin

Student Origin	Completer Count	In-State Median Wage	Out-of-State* Median Wage
All	309,720	\$40,601	\$43,744
Kentucky Origin	242,703	\$40,278	\$43,904
Non-Kentucky Origin	67,017	\$44,417	\$43,580



2022 Life Outcomes for 2015 Kentucky Public High School Graduates

This dashboard is powered by the Kentucky Center for Statistics. Those using screen readers may need to click the enter key to select options in filters. This dashboard is best viewed on a desktop computer. If you have any questions, please contact kystats@ky.gov. Follow us @KYSTATS on social media.

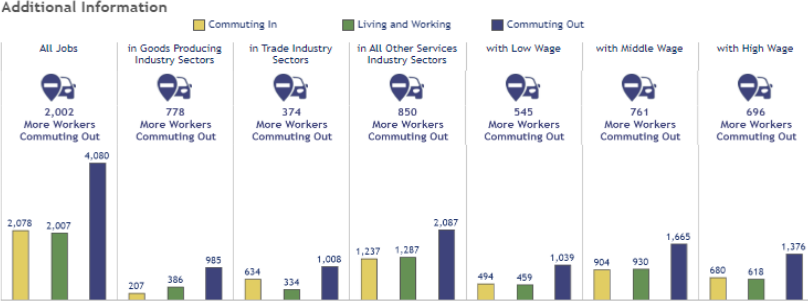
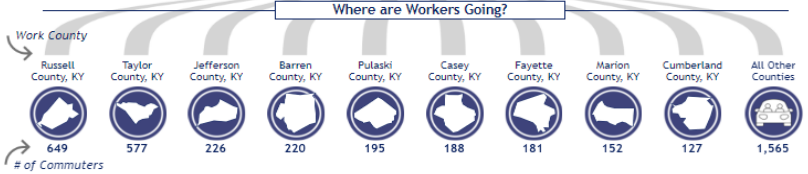
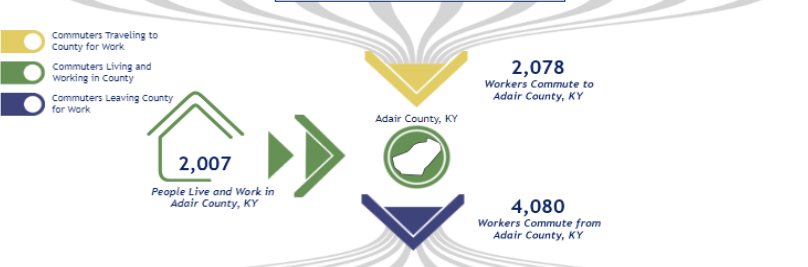
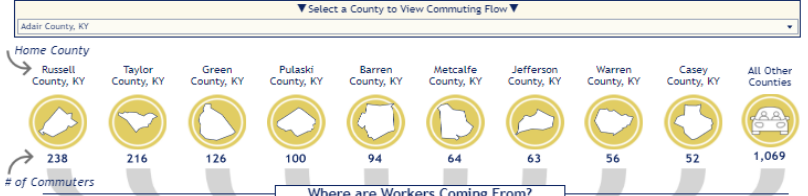
An alternative, accessible format in Excel is available for download here: https://bit.ly/LO_Excel



KENTUCKY COMMUTING PATTERNS REPORT

Last Update: June 2023

This dashboard is powered by the Kentucky Center for Statistics. This dashboard is best viewed on a desktop computer. If you have any questions regarding accessibility, contact kystats@ky.gov. An alternative, accessible format in Excel is available for download here: https://bit.ly/Commute_Excel. Technical documentation can be found in PDF form here: https://bit.ly/Commute_PDF



Visualization & Story Telling



HIGH SCHOOL FEEDBACK REPORT

This dashboard is powered by the Kentucky Center for Statistics. Those using screen readers may need to click the enter key to select options in filters. This dashboard is best viewed on a desktop computer. If you have any questions regarding accessibility, please contact kystats@ky.gov. Follow us @KYSTATS on social media.

An alternative, accessible format in Excel is available for download here:

<https://bit.ly/HSFR-2024-PAF>

Technical documentation can be found in PDF form here:

<https://bit.ly/HSFR-2024-TechNotes>

Select a Dashboard to View

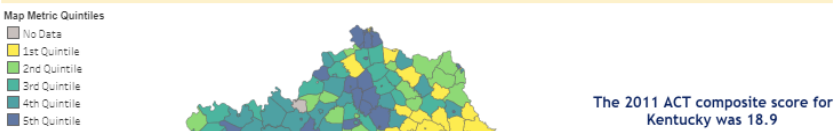
- College-Going and Success
- College Enrollment and Outcomes
- Loans and Wages

Select an Academic Year to Filter the State-Level Metrics and District Maps.

State Level College-Going or College Success Metrics

ACT COMPOSITE	HIGH SCHOOL GPA	HIGH SCHOOL GRAD RATE	POSTSECONDARY READINESS	FAFSA COMPLETION RATE
18.9	2.81	No Data	No Data	No Data
MEAN KEEES MONEY EARNED	COLLEGE CREDIT WHILE IN HIGH SCHOOL	COLLEGE-GOING RATE	FIRST YEAR COLLEGE GPA	FIRST YEAR COLLEGE CREDIT HOURS EARNED
\$1,030	29.9%	61.8%	2.21	17

Select to Change the Metric on the Maps and Trend Grid



Select a Geography Level to Compare College-Going and College Success Metric Trends by Demographic

Select a Geography Level: State | Select a Location: Kentucky | Select a Demographic Group: (all)

College-Going and College Success Metrics by Demographic Group

	2011	2012	2013	2014	2015	2016	2017	2018	2019	2020	2021	2022
All Students	19	19	19	19	20	20	20	20	19	19	19	18
Female	19	19	20	20	20	20	20	20	19	20	20	18
Male	19	19	19	19	19	19	19	20	19	19	19	18
Black, Non-Hispanic	16	16	17	17	17	17	17	17	16	16	16	15
White, Non-Hispanic	19	20	20	20	20	20	20	20	20	20	20	19
Hispanic or Latino, regardless of race	18	18	18	18	18	19	19	19	18	18	18	17
Other	19	19	19	19	20	20	20	21	21	20	20	19
Special Education	14	15	14	15	15	15	15	15	15	15	14	14
Free/Reduced Lunch	17	17	17	18	18	18	18	18	18	18	17	17
Paid Lunch	20	21	21	21	21	21	22	22	21	21	21	20
Homeless	17	17	17	17	17	17	17	18	17	17	17	16
Foster				Redacted		Redacted	Redacted	17	16	16	16	15
SNAP								17	18	17	17	16
KTAP								17	18	17	16	16

This grid shows the ACT Composite Score for the selected demographics and geography. Scores are also color coded from light to dark along each metric (vertically), with darker colors indicating higher scores. "Redacted" indicates redacted data while "No Data" indicates no data are available for that group selection. Blank spaces for Foster, SNAP, and KTAP groups indicate years these demographics were not available.
 *The Kentucky Highlands Community Network is a collection of 8 counties in eastern Kentucky that is a part of the Rural Partners Network.

K-12

- College Going & Success
- College Enrollment & Outcomes
- Loans & Wages

Visualization & Story Telling



State Level College-Going or College Success Metrics

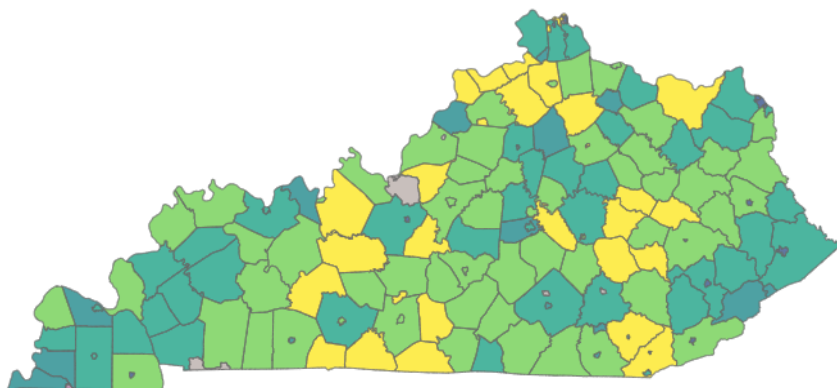
ACT COMPOSITE	HIGH SCHOOL GPA	HIGH SCHOOL GRAD RATE	POSTSECONDARY READINESS	FAFSA COMPLETION RATE
19.1	3.04	92.0%	No Data	65.6%
MEAN KEES MONEY EARNED	COLLEGE CREDIT WHILE IN HIGH SCHOOL	COLLEGE-GOING RATE	FIRST YEAR COLLEGE GPA	FIRST YEAR COLLEGE CREDIT HOURS EARNED
\$1,205	51.9%	53.8%	2.37	19

Select to Change the Metric on the Maps and Trend Grid

College-Going Rate

Map Metric Quintiles

- No Data
- 1st Quintile
- 2nd Quintile
- 3rd Quintile
- 4th Quintile
- 5th Quintile
- Redacted



The 2020 college-going rate for Kentucky was 54%

Visualization & Story Telling

College-Going and College Success Metrics by Demographic Group




	2011	2012	2013	2014	2015	2016	2017	2018	2019	2020	2021	2022
All Students	62%	62%	61%	61%	60%	59%	59%	58%	57%	54%	52%	No Data
Female	69%	69%	68%	69%	67%	67%	67%	67%	65%	63%	60%	No Data
Male	55%	55%	53%	53%	53%	52%	52%	50%	48%	45%	43%	No Data
Black, Non-Hispanic	62%	60%	60%	58%	54%	54%	55%	52%	52%	46%	46%	No Data
White, Non-Hispanic	62%	63%	62%	62%	61%	60%	60%	59%	57%	54%	52%	No Data
Hispanic or Latino, regardless of race	55%	56%	53%	54%	52%	55%	55%	50%	49%	48%	44%	No Data
Other	60%	58%	57%	59%	56%	58%	62%	66%	72%	67%	61%	No Data
Special Education	19%	23%	17%	17%	19%	21%	23%	20%	20%	18%	17%	No Data
Free/Reduced Lunch	49%	49%	48%	48%	47%	47%	47%	46%	44%	42%	39%	No Data
Paid Lunch	72%	73%	74%	73%	73%	72%	72%	71%	70%	67%	65%	No Data
Homeless	43%	44%	41%	41%	39%	40%	40%	39%	38%	36%	34%	No Data
Foster				Redacted		Redacted	Redacted	39%	31%	25%	28%	No Data
SNAP							40%	39%	39%	37%	34%	No Data
KTAP							44%	38%	37%	35%	31%	No Data

Visualization & Story Telling


Multi-State Report

- Employment by Institution
- Employment by Demo
- Employment by Major



Multi-State Postsecondary Report

COLERIDGE INITIATIVE



Employment by Institution
Employment by Demographic
Employment by Major

This dashboard is powered by the Kentucky Center for Statistics. Those using screen readers may need to click the enter key to select options in filters. This dashboard is best viewed on a desktop computer. If you have any questions regarding accessibility, please contact kystats@ky.gov.

Technical Documentation can be found in PDF form here: https://bit.ly/mspr_technical_notes

Filter Report by State ▼
Kentucky Postsecondary Completers

This dashboard includes three sections: Employment Outcomes by Major Group, Credential, and Student Origin. Each of these sections are filterable by Institution and Years Post Completion. Wage Information can be filtered by percentile group using the wage filter. Employment outcomes looks at Kentucky Postsecondary Completers across the 2007 through 2017 academic years (AY) followed to post completion qualifying employment in Indiana, Kentucky, Ohio, and Tennessee. Qualifying Employment Outcomes are workers with at least 2 quarters employed and at least \$3,000 dollars earned in a 4 quarter period. A double asterisk in a data table represents redacted values, blank data represents no data available.

Filter the Dashboard by Institution ▼
All

Filter the Dashboard by Years Post Completion ▼
2-Years Post-Completion

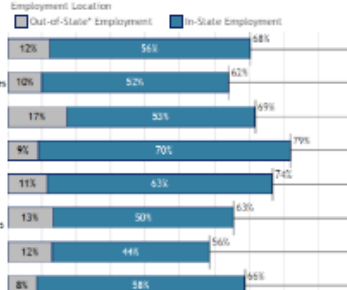
Filter Wages by Percentile ▼
Median Wage

Employment Outcomes by Major Group

This section provides qualifying employment outcomes for each major group. Major groups are categories that each contain several majors.

Major Group	Completer Count	In-State Median Wage	Out-of-State* Median Wage
All	309,720	\$40,601	\$43,744
Arts and Humanities	50,251	\$29,522	\$31,837
Business	53,200	\$42,097	\$48,806
Education	38,290	\$48,704	\$42,228
Health	66,226	\$44,068	\$50,885
Social and Behavioral Sciences	45,003	\$35,215	\$38,460
STEM	34,603	\$45,628	\$51,778
Trades	22,147	\$36,035	\$39,598

Major Group	Out-of-State* Employment	In-State Employment
All	12%	56%
Arts and Humanities	10%	52%
Business	17%	32%
Education	9%	70%
Health	11%	63%
Social and Behavioral Sciences	13%	50%
STEM	12%	44%
Trades	8%	58%



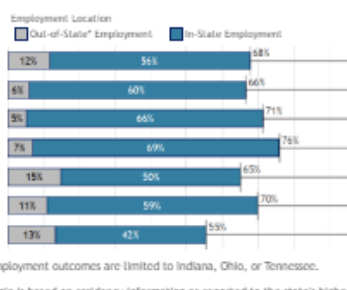
*Out-of-State employment outcomes are limited to Indiana, Ohio, or Tennessee.

Employment Outcomes by Credential

This section provides qualifying employment outcomes for each credential level.

Credential	Completer Count	In-State Median Wage	Out-of-State* Median Wage
All	309,720	\$40,601	\$43,744
Certificate	30,471	\$23,497	\$25,306
Diploma	5,133	\$32,619	\$34,434
Associate	53,350	\$36,646	\$39,135
Bachelor	143,920	\$38,039	\$41,247
Master	62,155	\$52,491	\$54,599
Doctoral	14,691	\$70,197	\$66,561

Credential	Out-of-State* Employment	In-State Employment
All	12%	56%
Certificate	8%	60%
Diploma	9%	66%
Associate	7%	69%
Bachelor	15%	50%
Master	11%	59%
Doctoral	13%	42%



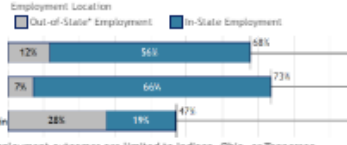
*Out-of-State employment outcomes are limited to Indiana, Ohio, or Tennessee.

Employment Outcomes by Student Origin

This section provides qualifying employment outcomes for student origin groupings. Student origin is based on residency information as reported to the state's higher education agency. When the state or origin matches the state of the higher education institution, the individual is considered of "In-State" origin.

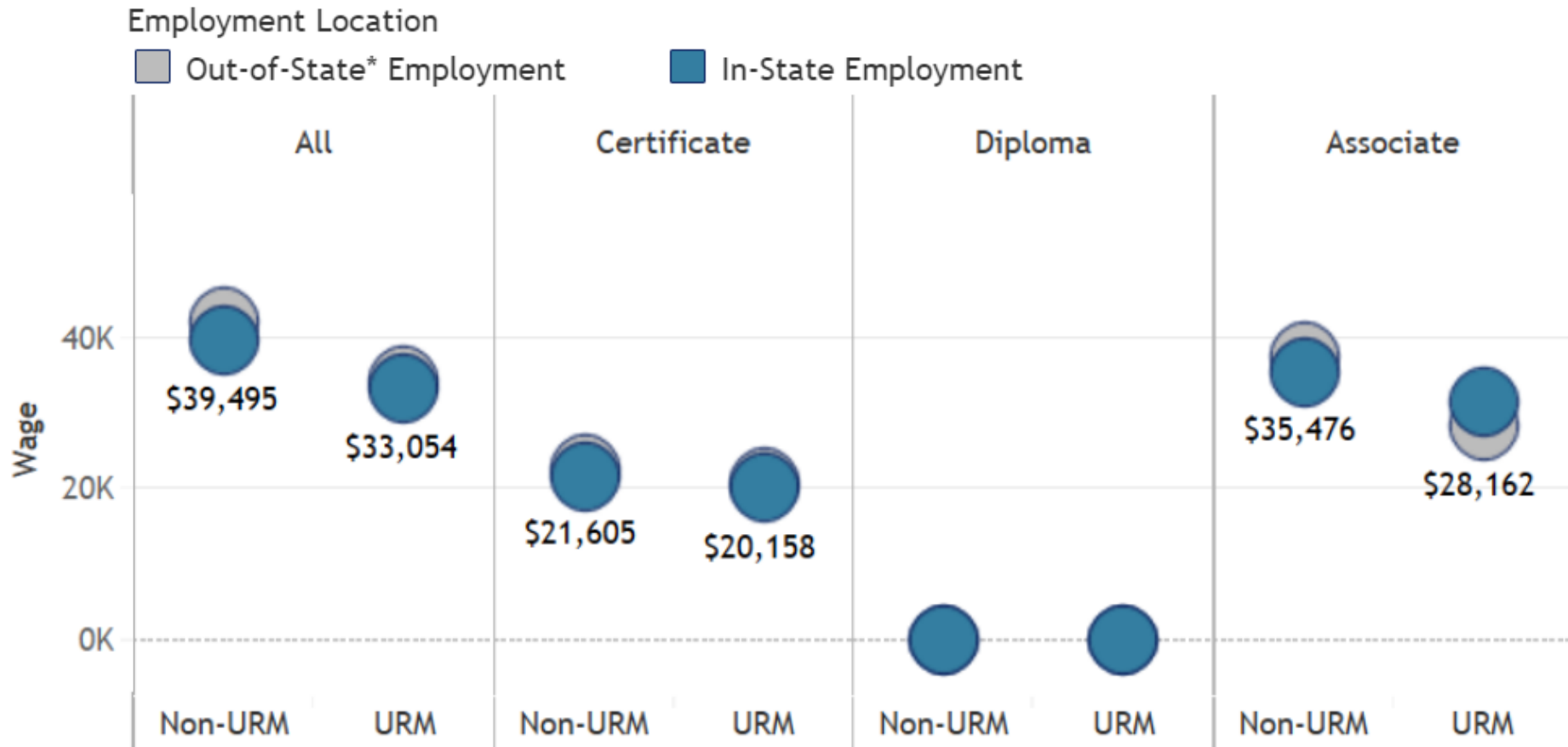
Student Origin	Completer Count	In-State Median Wage	Out-of-State* Median Wage
All	309,720	\$40,601	\$43,744
Kentucky Origin	242,703	\$40,278	\$43,904
Non-Kentucky Origin	67,017	\$44,417	\$43,580

Student Origin	Out-of-State* Employment	In-State Employment
All	12%	56%
Kentucky Origin	7%	66%
Non-Kentucky Origin	28%	19%



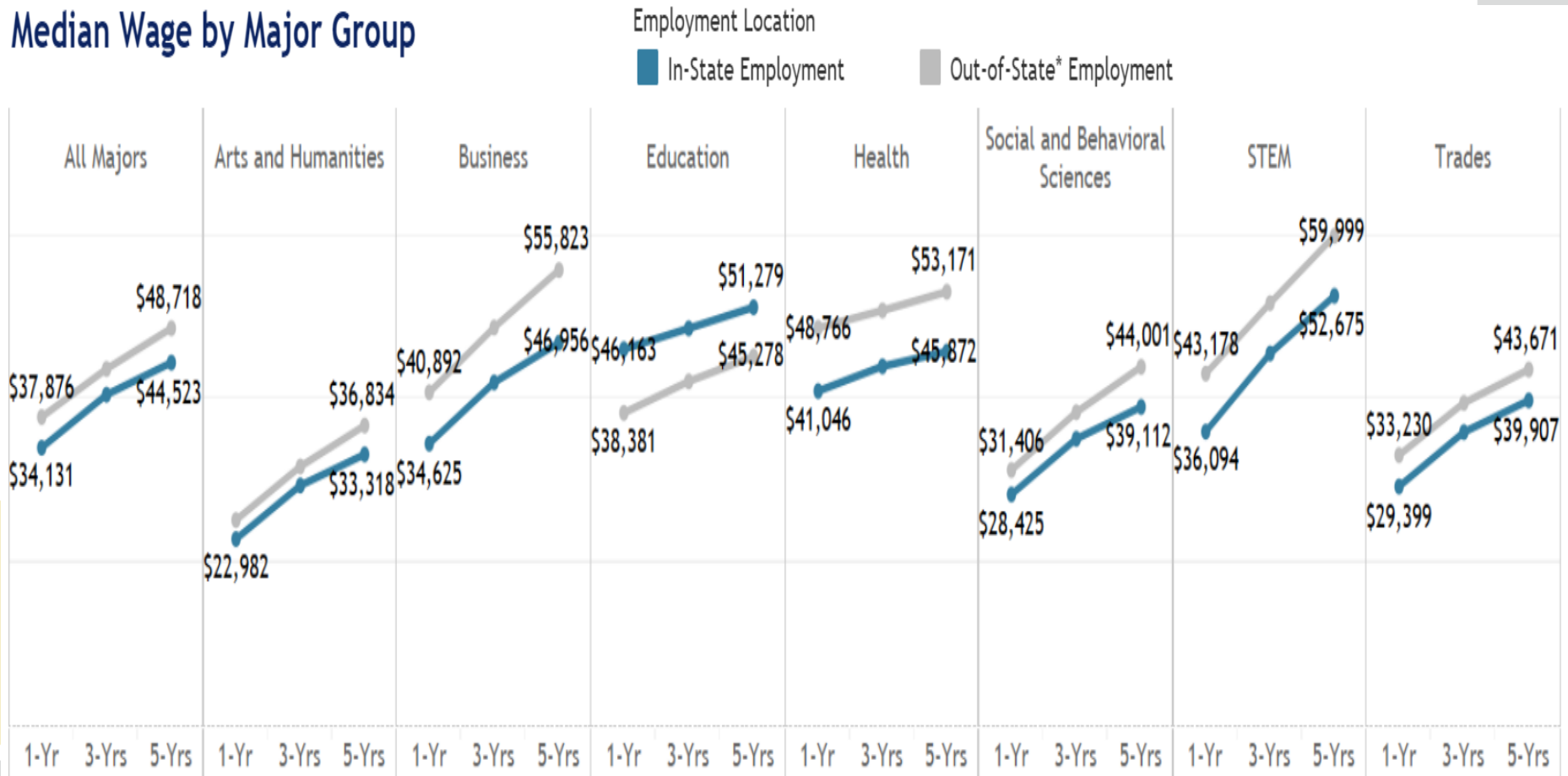
*Out-of-State employment outcomes are limited to Indiana, Ohio, or Tennessee.

Visualization & Story Telling



Visualization & Story Telling

Median Wage by Major Group



*Out-of-State employment outcomes are limited to Indiana, Ohio, or Tennessee.

Visualization & Story Telling



2022 Life Outcomes for 2015 Kentucky Public High School Graduates



This dashboard is powered by the Kentucky Center for Statistics. Those using screen readers may need to click the enter key to select options in filters. This dashboard is best viewed on a desktop computer. If you have any questions regarding accessibility, please contact kystats@ky.gov. Follow us @KYSTATS on social media.

An alternative, accessible format in Excel is available for download here:

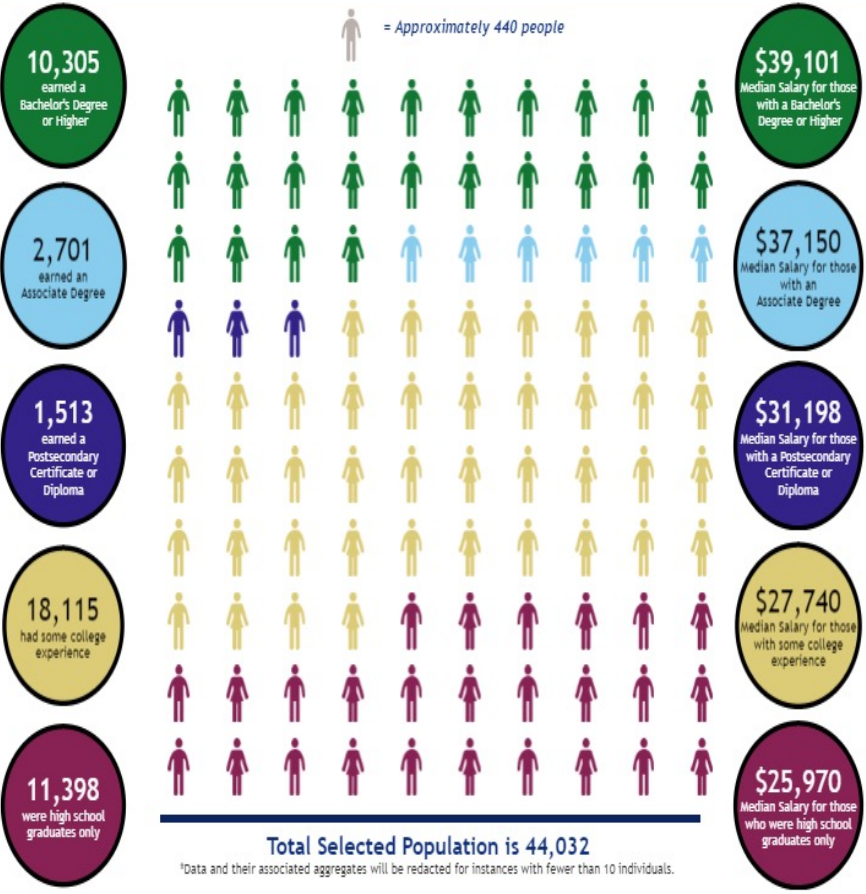
https://bit.ly/LOHS_PAF

Technical documentation can be found in PDF form here:

https://bit.ly/LOHS_TechNotes

Filter Dashboard by Demographic

All Graduates



2015 Grad Outcomes

- Education Attainment
- Wages

Visualization & Story Telling



Filter Dashboard by Demographic

- All Graduates
- All Graduates
- American Indian or Alaskan Native, Non-Hispanic Only
- Any Early Postsecondary Opportunities
- Appalachian
- Asian, Non-Hispanic Only
- At Least One AP Exam Attempted
- At Least One AP Exam Passed
- Black, Non-Hispanic Only
- CTE Certificate
- CTE Completion
- Dual Credit/Enrollment
- Female
- Free and/or Reduced-Priced Lunch
- Hawaiian or Other Pacific Islander, Non-Hispanic Only
- Hispanic or Latino, Regardless of Race
- Male
- No Recorded Employment 2022
- Non-Appalachian
- Not on Free and/or Reduced-Priced Lunch
- Other Race
- Recorded Employment 2022
- Two or More Races
- White, Non-Hispanic Only
- Work Based Learning

earned
Postsecondary



median salary for those
with a Postsecondary

Visualization & Story Telling

2,553
earned a Bachelor's Degree or Higher

1,164
earned an Associate Degree

803
earned a Postsecondary Certificate or Diploma

9,798
had some college experience

7,799
were high school graduates only

 = Approximately 221 people



\$34,942
Median Salary for those with a Bachelor's Degree or Higher

\$33,729
Median Salary for those with an Associate Degree

\$28,588
Median Salary for those with a Postsecondary Certificate or Diploma

\$25,068
Median Salary for those with some college experience

\$23,236
Median Salary for those who were high school graduates only

Total Selected Population is 22,117

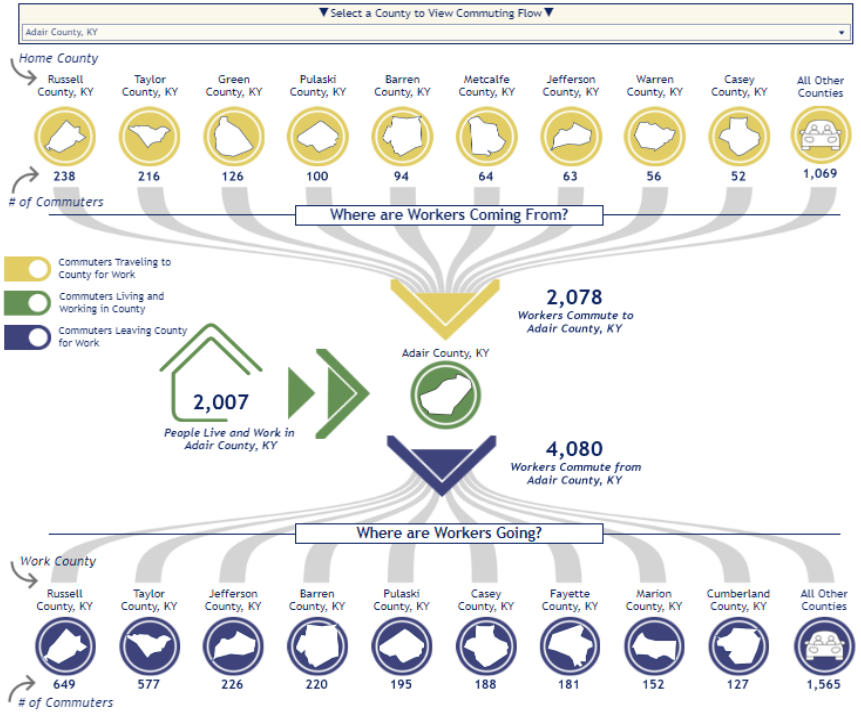
*Data and their associated aggregates will be redacted for instances with fewer than 10 individuals.

Visualization & Story Telling

KENTUCKY COMMUTING PATTERNS REPORT
 Last Update: June 2023

OVERVIEW INTERACTIVE

This dashboard is powered by the Kentucky Center for Statistics. This dashboard is best viewed on a desktop computer. If you have any questions regarding accessibility, contact kystats@ky.gov.
 An alternative, accessible format in Excel is available for download here: https://bit.ly/Commute_Data Technical documentation can be found in PDF form here: https://bit.ly/Commute_PDF

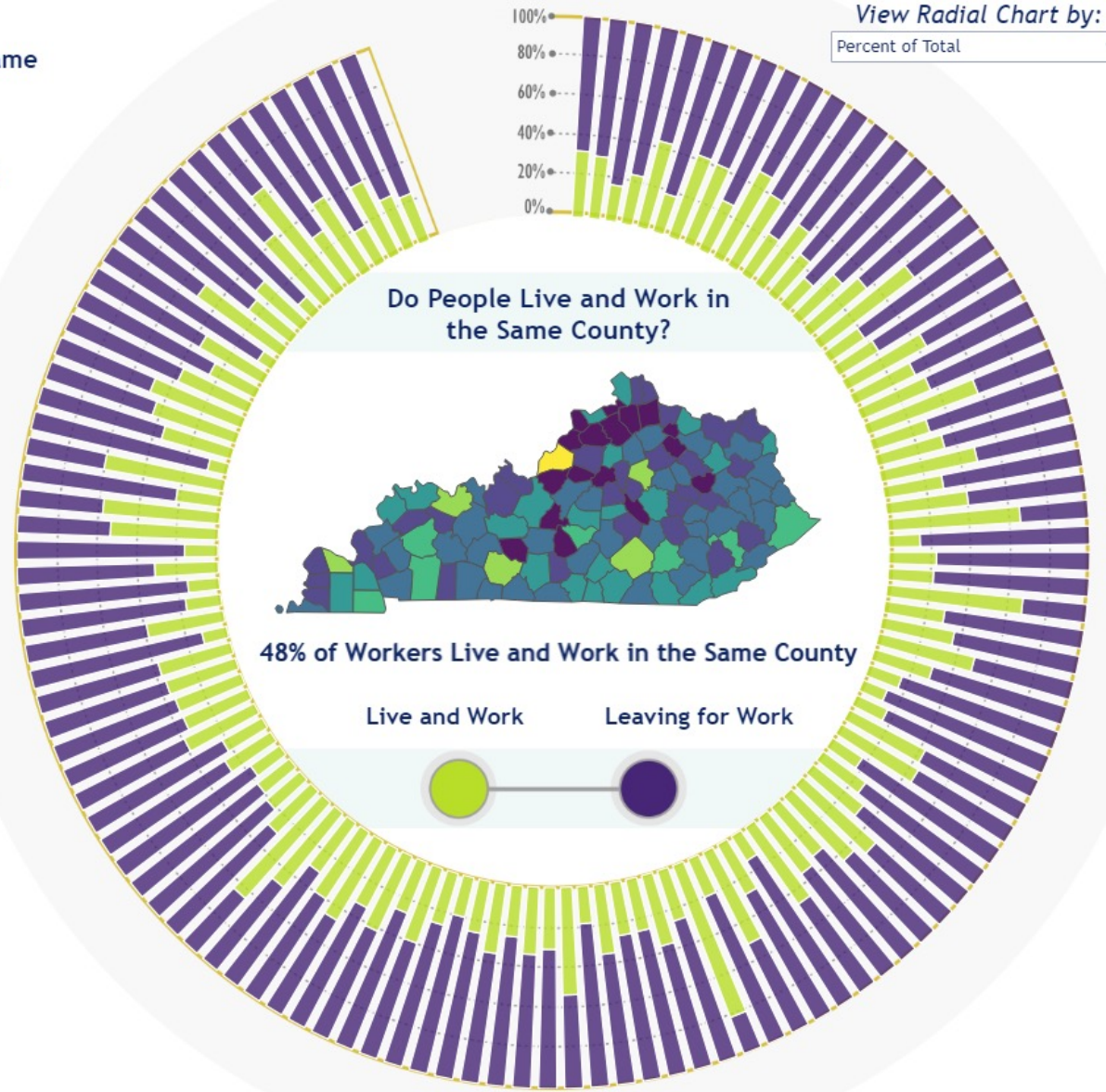
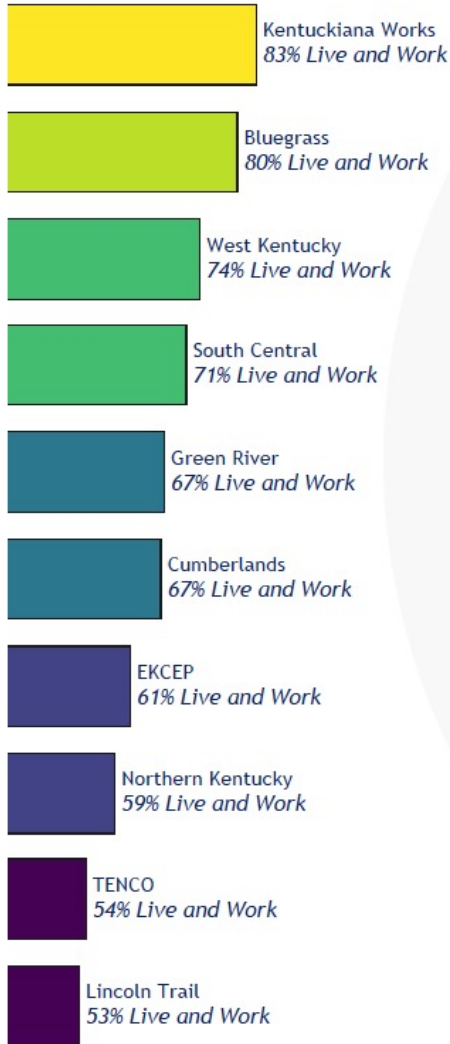


K-12, Ed, Workforce

- Commuting Patterns
- Geography

Visualization & Story Telling

Do People Live and Work in the Same LWA?



Visualization & Story Telling

- Question-Centered Approach
- Simplicity
- User Empowerment
- Know Your Who & Why
- Accessibility & Creativity
- Finding a Balance
- What/How Else?

Ready to Learn More?

kystats.ky.gov

[@kystats](https://twitter.com/kystats)

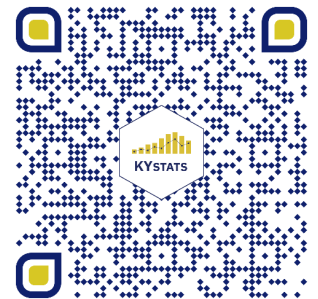
Matt Berry, Ph.D.

Executive Director

matt.berry@ky.gov



Join our mailing list!



Visualization & Storytelling

<https://kystats.ky.gov/Latest/HSFR>

<https://kystats.ky.gov/Latest/MSPSR>

<https://kystats.ky.gov/Latest/LifeOutcomes>

<https://kystats.ky.gov/Latest/KCPR>